



MLS 6538328 Residential

\$449,999

2,296 sq ft
5 bedrooms
3 baths

29929 Aztec Circle
Pequot Lakes MN 56472

Status: Active

Description:

Welcome to your dream home! Positioned on a tranquil 1-acre lot, this charming 5-bedroom, 3-bathroom residence offers the perfect blend of comfort and tranquility. Step into the expansive backyard oasis, featuring a detached 2-stall garage for your vehicles and projects, along with an additional storage building boasting bunk quarters above it – an ideal space for guests or fulfilling additional storage needs.

Located in a highly desirable neighborhood, this home provides convenient access to amenities such as shopping, dining, and recreational facilities, all while preserving a sense of privacy and seclusion. Whether you're yearning for a peaceful retreat, a space to entertain, or a cozy family abode, this property presents endless possibilities to tailor it to your desires.

Don't let this exceptional opportunity slip away. Schedule your private tour today and experience firsthand the beauty and tranquility of this enchanting home!

Additional Details:

Year Built	2001
Lot Acres	1.01
Lot Dimensions	130x191x175x260
Garage Stalls	6
School District	186
Taxes	\$2,977
Taxes with Assessments	\$3,002
Tax Year	2024

Additional Features:

Basement: Block **Fuel:** Natural Gas **Garage:** 6 **Heat:** Forced Air, Fireplace(s) **Sewer:** Private Sewer **Water:** Well **Air Conditioning:** Central Air

Driving Directions:

South on Ranchette Dr. from Co Rd 11, Right on Dove St, Left on Aztec Cir.



Listed By:
Coldwell Banker Realty

Affinity Real Estate Inc. participates in the Regional Multiple Listing Service of Minnesota, Inc Broker Reciprocity (sm) program, allowing us to display other broker's listings on our website. All properties are subject to prior sale, change or withdrawal.



Call Affinity Real Estate

218-237-3333

info@affinityrealestate.com



Affinity Real Estate - 600 Park Avenue South - Park Rapids MN 56470



website: www.AffinityRealEstate.com | email: info@affinityrealestate.com | office: 218-237-3333 | fax: 218-237-3377

Affinity
REAL ESTATE INC

\$449,999
MLS 6538328 Residential
29929 Aztec Circle
Pequot Lakes MN 56472



website: www.AffinityRealEstate.com | email: info@affinityrealestate.com | office: 218-237-3333 | fax: 218-237-3377

Affinity
REAL ESTATE INC

\$449,999
MLS 6538328 Residential
29929 Aztec Circle
Pequot Lakes MN 56472



website: www.AffinityRealEstate.com | email: info@affinityrealestate.com | office: 218-237-3333 | fax:218-237-3377

Affinity
REAL ESTATE INC

\$449,999
MLS 6538328 Residential
29929 Aztec Circle
Pequot Lakes MN 56472



website: www.AffinityRealEstate.com | email: info@affinityrealestate.com | office: 218-237-3333 | fax:218-237-3377

Affinity
REAL ESTATE INC

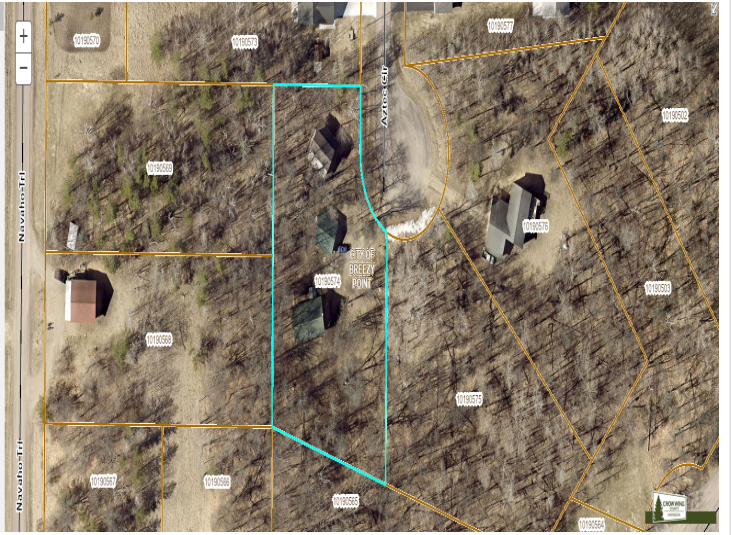
\$449,999
MLS 6538328 Residential
29929 Aztec Circle
Pequot Lakes MN 56472



website: www.AffinityRealEstate.com | email: info@affinityrealestate.com | office: 218-237-3333 | fax: 218-237-3377

Affinity
REAL ESTATE INC

\$449,999
MLS 6538328 Residential
29929 Aztec Circle
Pequot Lakes MN 56472



website: www.AffinityRealEstate.com | email: info@affinityrealestate.com | office: 218-237-3333 | fax:218-237-3377



\$449,999
MLS 6538328 Residential
29929 Aztec Circle
Pequot Lakes MN 56472