



MLS 6539318 Residential

\$329,000

2,392 sq ft
4 bedrooms
2 baths

21681 Elmwood Circle
Nevis MN 56467

Status: Active

Description:

Nestled in a prime location between Nevis and Park Rapids, this well-cared-for 3+ bedroom home features some great updates both inside and out. The meticulously designed kitchen boasts custom cabinets, exquisite quartz countertops, high-end stainless steel appliances, and a center island. The main level hosts three bedrooms, while the lower level offers a family room, and two extra rooms that could be used for an office or add an egress window to make it a 4 bedroom home. The lower level also provides great storage options. The property, spanning a double lot, provides a serene retreat with its meticulously manicured yard, tar driveway, and newly installed roof. Don't miss the opportunity to experience this captivating home, schedule your appointment today. The price increase is due to the seller installing a \$20,000 brand-new 4 bedroom septic system in June, 2024

Additional Details:


Year Built	1980
Lot Acres	2.76
Lot Dimensions	400x300
Garage Stalls	2
School District	308
Taxes	\$1,130
Taxes with Assessments	\$1,340
Tax Year	2024

Additional Features:

Basement: Block, Finished, Full **Fuel:** Propane **Garage:** 2 **Heat:** Forced Air **Sewer:** Private Sewer, Septic System Compliant - Yes, Tank with Drainage Field **Water:** Drilled, Private, Well **Air Conditioning:** Central Air

Driving Directions:

From 34/71 in Park Rapids, East on 34 approx 6 miles to Elmwood. Right on Elmwood, then first right on Elmwood Circle to #21681 on left.

 Listed By:
Wolff & Simon Real Estate

Affinity Real Estate Inc. participates in the Regional Multiple Listing Service of Minnesota, Inc Broker Reciprocity (sm) program, allowing us to display other broker's listings on our website. All properties are subject to prior sale, change or withdrawal.

 **Call Affinity Real Estate**
218-237-3333
info@affinityrealestate.com

Affinity Real Estate - 600 Park Avenue South - Park Rapids MN 56470



website: www.AffinityRealEstate.com | email: info@affinityrealestate.com | office: 218-237-3333 | fax: 218-237-3377

Affinity
REAL ESTATE INC

\$329,000
MLS 6539318 Residential
21681 Elmwood Circle
Nevis MN 56467



website: www.AffinityRealEstate.com | email: info@affinityrealestate.com | office: 218-237-3333 | fax:218-237-3377

Affinity
REAL ESTATE INC

\$329,000
MLS 6539318 Residential
21681 Elmwood Circle
Nevis MN 56467



website: www.AffinityRealEstate.com | email: info@affinityrealestate.com | office: 218-237-3333 | fax:218-237-3377

Affinity
REAL ESTATE INC

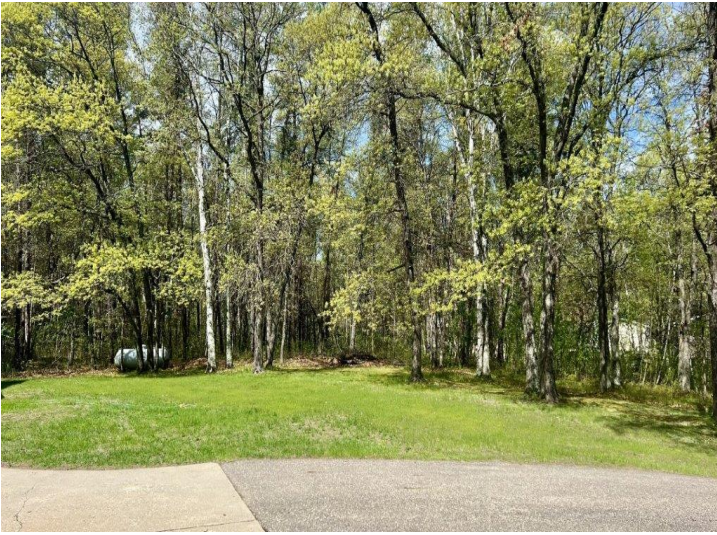
\$329,000
MLS 6539318 Residential
21681 Elmwood Circle
Nevis MN 56467



website: www.AffinityRealEstate.com | email: info@affinityrealestate.com | office: 218-237-3333 | fax:218-237-3377



\$329,000
MLS 6539318 Residential
21681 Elmwood Circle
Nevis MN 56467



website: www.AffinityRealEstate.com | email: info@affinityrealestate.com | office: 218-237-3333 | fax:218-237-3377



\$329,000
MLS 6539318 Residential
21681 Elmwood Circle
Nevis MN 56467