



MLS 6539325 Lake Land

\$100,000

Description:

Discover your perfect retreat on this 1.81-acre lake lot with 150 feet of lakeshore on Little Hattie Lake. The building site has been cleared and is ready for your vision, whether it's a cabin, home, shouse, or just a camping spot. With electric and fiber optics available on the lot, you have modern conveniences at your fingertips. Enjoy evenings around the stone fire pit, and take advantage of the easy drive-down trail to the lake. Little Hattie Lake, with its excellent fishing and kayaking, connects to Hattie Lake, offering an additional 459 acres of water to explore. Neither lake has public access, ensuring peace and quiet. This property includes a dock and lakeside shed, making it an ideal spot to relax and enjoy the beauty of nature.

Additional Details:

| | |
|------------------------|-----------------|
| Lot Acres | 1.81 |
| Lot Dimensions | 150x520x145x570 |
| School District | 2174 |
| Taxes | \$222 |
| Taxes with Assessments | \$202 |
| Tax Year | 2024 |

Additional Features:

Driving Directions:

From Hwy 371, Backus: East on Hwy 87 for 6.2 miles. Right on 20th Ave NW for 1.6 miles to property that is at end of road.



Listed By:
Gallery of Homes

Affinity Real Estate Inc. participates in the Regional Multiple Listing Service of Minnesota, Inc Broker Reciprocity (sm) program, allowing us to display other broker's listings on our website. All properties are subject to prior sale, change or withdrawal.



Call Affinity Real Estate

218-237-3333

info@affinityrealestate.com



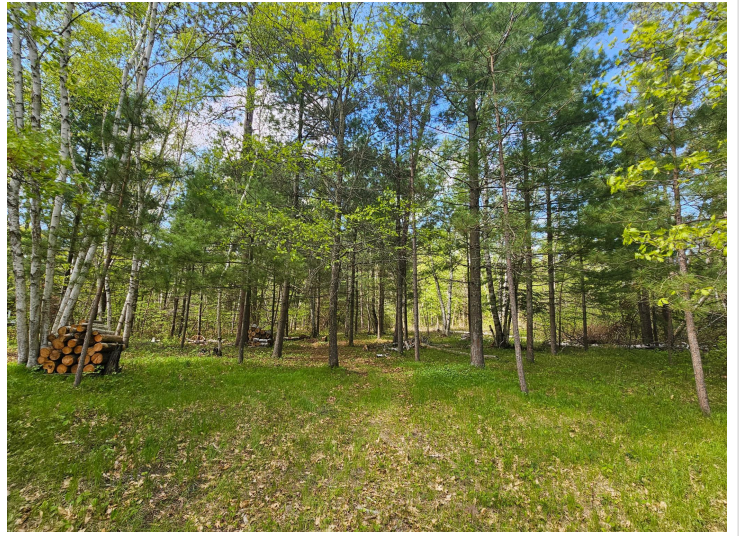
Affinity Real Estate - 600 Park Avenue South - Park Rapids MN 56470



website: www.AffinityRealEstate.com | email: info@affinityrealestate.com | office: 218-237-3333 | fax:218-237-3377



\$100,000
MLS 6539325 Lake Land
342 County 118
Backus MN 56435



website: www.AffinityRealEstate.com | email: info@affinityrealestate.com | office: 218-237-3333 | fax:218-237-3377

Affinity
REAL ESTATE INC

\$100,000
MLS 6539325 Lake Land
342 County 118
Backus MN 56435



website: www.AffinityRealEstate.com | email: info@affinityrealestate.com | office: 218-237-3333 | fax:218-237-3377



\$100,000
MLS 6539325 Lake Land
342 County 118
Backus MN 56435



website: www.AffinityRealEstate.com | email: info@affinityrealestate.com | office: 218-237-3333 | fax:218-237-3377



\$100,000
MLS 6539325 Lake Land
342 County 118
Backus MN 56435