



MLS 6539347 Residential

\$375,000

2,303 sq ft
4 bedrooms
2 baths

26660 US Highway 71
Sebeka MN 56477

Status: Hold

Description:

Fields and fences are the way of life here in small-town USA, Sebeka, Minnesota. Stroll through green, grassy fields waving in the wind, and discover a breadth of amazing lifestyle opportunities just a hop, skip and a jump from town. This big acreage with a tidy farmhouse and relaxed atmosphere rests at the forefront of a classic country homestead. Fill the barns and sheds full of vehicles and tools, then take the tractor out to the back 40 to mow trails, mend fences and build more deer stands. That's right, this property already includes deer stands and hardwoods overlooking a boggy depression full of birds, beavers and waterfowl at the southeast corner. Easily get to town via any method of travel, just two miles away for a meal at a map-and-pa diner, or just watch the lazy Red Eye River ambling its way through the city park and beyond. Take the stress out of life; live the humble, self-sufficient country life here in Sebeka.

Additional Details:

Year Built	1982
Lot Acres	52.44
Lot Dimensions	1626x848x1275x1336
Garage Stalls	2
School District	820
Taxes	\$2,196
Taxes with Assessments	\$2,196
Tax Year	2023

Additional Features:

Basement: Finished **Fuel:** Electric, Propane, Wood **Garage:** 2 **Heat:** Baseboard, Boiler, Outdoor Boiler, Radiant **Sewer:** Mound Septic, Septic System Compliant - Yes **Water:** Submersible - 4 Inch, Drilled, Private, Well **Air Conditioning:** None

Driving Directions:

From Sebeka, Drive South on US 71 for 1.4 miles. Property will be on the East side of 71



Listed By:
Your Home Sold Guaranteed Realty Exclusive

Affinity Real Estate Inc. participates in the Regional Multiple Listing Service of Minnesota, Inc Broker Reciprocity (sm) program, allowing us to display other broker's listings on our website. All properties are subject to prior sale, change or withdrawal.



Call Affinity Real Estate

218-237-3333

info@affinityrealestate.com



Affinity Real Estate - 600 Park Avenue South - Park Rapids MN 56470



website: www.AffinityRealEstate.com | email: info@affinityrealestate.com | office: 218-237-3333 | fax: 218-237-3377

Affinity
REAL ESTATE INC

\$375,000
MLS 6539347 Residential
26660 US Highway 71
Sebeka MN 56477



website: www.AffinityRealEstate.com | email: info@affinityrealestate.com | office: 218-237-3333 | fax: 218-237-3377

Affinity
REAL ESTATE INC

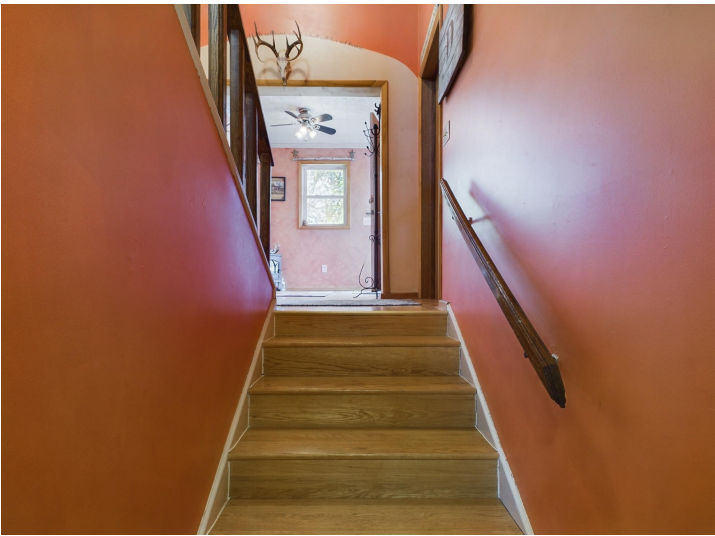
\$375,000
MLS 6539347 Residential
26660 US Highway 71
Sebeka MN 56477



website: www.AffinityRealEstate.com | email: info@affinityrealestate.com | office: 218-237-3333 | fax: 218-237-3377

Affinity
REAL ESTATE INC

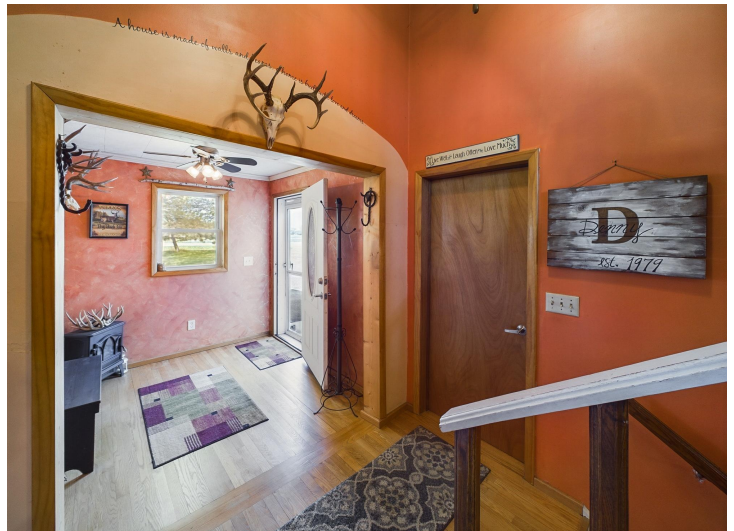
\$375,000
MLS 6539347 Residential
26660 US Highway 71
Sebeka MN 56477



website: www.AffinityRealEstate.com | email: info@affinityrealestate.com | office: 218-237-3333 | fax: 218-237-3377

Affinity
REAL ESTATE INC

\$375,000
MLS 6539347 Residential
26660 US Highway 71
Sebeka MN 56477



website: www.AffinityRealEstate.com | email: info@affinityrealestate.com | office: 218-237-3333 | fax: 218-237-3377

Affinity
REAL ESTATE INC

\$375,000
MLS 6539347 Residential
26660 US Highway 71
Sebeka MN 56477



website: www.AffinityRealEstate.com | email: info@affinityrealestate.com | office: 218-237-3333 | fax: 218-237-3377



\$375,000
 MLS 6539347 Residential
 26660 US Highway 71
 Sebeka MN 56477



website: www.AffinityRealEstate.com | email: info@affinityrealestate.com | office: 218-237-3333 | fax: 218-237-3377



\$375,000
 MLS 6539347 Residential
 26660 US Highway 71
 Sebeka MN 56477



website: www.AffinityRealEstate.com | email: info@affinityrealestate.com | office: 218-237-3333 | fax: 218-237-3377



\$375,000

MLS 6539347 Residential
26660 US Highway 71
Sebeka MN 56477



website: www.AffinityRealEstate.com | email: info@affinityrealestate.com | office: 218-237-3333 | fax: 218-237-3377



\$375,000
MLS 6539347 Residential
26660 US Highway 71
Sebeka MN 56477