



MLS 6539354 Lake Land

\$189,900

Description:

Welcome to your future sanctuary on Sibley Lake in Pequot Lakes, MN! This picturesque lake lot on the serene shores of Sibley Lake is the perfect canvas for your dream home or cabin. Imagine waking up to stunning lake views, surrounded by a beautiful mix of hardwoods and pines that offer both privacy and natural beauty. The lot features a level building area, making it an ideal spot for construction. Located just a short distance from Pequot Lakes, you'll enjoy the perfect blend of tranquility and convenience with easy access to local amenities, shops, trails/activities, and dining. Whether you're looking to build a year-round residence or a seasonal getaway, this prime piece of real estate is ready to bring your vision to life. Don't miss out on the opportunity to create lasting memories in this beautiful setting. Contact us today to explore the endless possibilities that await you on Sibley Lake!

Additional Details:

Lot Acres	0.6
Lot Dimensions	100 x 250
School District	186
Taxes	\$754
Taxes with Assessments	\$754
Tax Year	2024

Additional Features:

Driving Directions:

From Main Street in Pequot Lakes, head north on Patriot Ave, Left on CR-17 SW, Left on Sibley Lake Rd SW, Left on Dodder LN SW to property signs on the left.



Listed By:
Larson Group Real Estate/Kelle

Affinity Real Estate Inc. participates in the Regional Multiple Listing Service of Minnesota, Inc Broker Reciprocity (sm) program, allowing us to display other broker's listings on our website. All properties are subject to prior sale, change or withdrawal.



Call Affinity Real Estate

218-237-3333

info@affinityrealestate.com



Affinity Real Estate - 600 Park Avenue South - Park Rapids MN 56470



website: www.AffinityRealEstate.com | email: info@affinityrealestate.com | office: 218-237-3333 | fax:218-237-3377



\$189,900
MLS 6539354 Lake Land
TBD Dodder Lane SW
Pequot Lakes MN 56472



website: www.AffinityRealEstate.com | email: info@affinityrealestate.com | office: 218-237-3333 | fax:218-237-3377

Affinity
REAL ESTATE INC

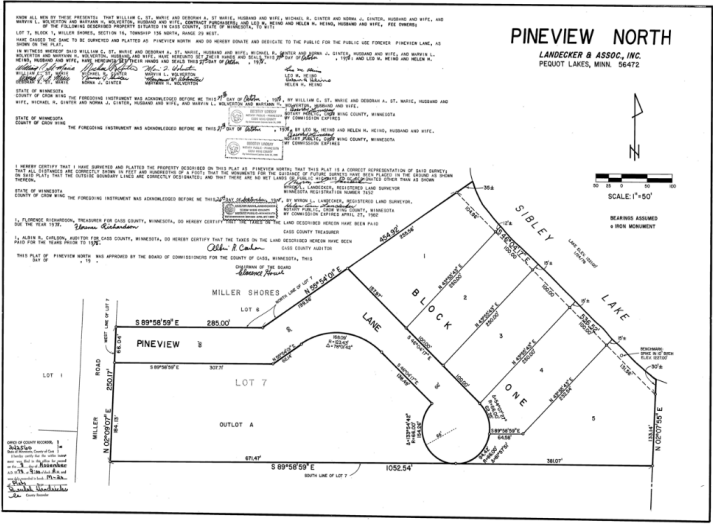
\$189,900
MLS 6539354 Lake Land
TBD Dodder Lane SW
Pequot Lakes MN 56472



website: www.AffinityRealEstate.com | email: info@affinityrealestate.com | office: 218-237-3333 | fax:218-237-3377



\$189,900
MLS 6539354 Lake Land
TBD Dodder Lane SW
Pequot Lakes MN 56472



website: www.AffinityRealEstate.com | email: info@affinityrealestate.com | office: 218-237-3333 | fax: 218-237-3377



\$189,900
 MLS 6539354 Lake Land
 TBD Dodder Lane SW
 Pequot Lakes MN 56472