



MLS 6539400 Lake Land

\$129,900

Description:

Welcome to 5.79 acres of serene beauty along the coveted banks of the Crow Wing River. This picturesque parcel embodies tranquility and natural elegance, offering a blissful setting for your vision to unfold. Nestled amidst the whispers of nature, this expansive lot provides ample space to realize your dreams of a private retreat or riverside sanctuary. Discover the perfect balance of seclusion and accessibility, as you immerse yourself in the captivating charm of this highly sought-after locale. Embrace the opportunity to create your own slice of paradise on this stunning stretch of the Crow Wing River.

Additional Details:

Lot Acres	5.79
Lot Dimensions	254x1038
School District	2170
Taxes	\$282
Taxes with Assessments	\$282
Tax Year	2024

Additional Features:

Driving Directions:

From Motley head North on US-10 W, Turn right onto MN-210 E for 0.3 miles, turn left onto MN-64 N for 1.9 miles, turn left onto 120th Street SW for 4 miles, turn right onto County 32 SW for 0.1 mile on left side of road.



Listed By:
Weichert REALTORS Tower Properties

Affinity Real Estate Inc. participates in the Regional Multiple Listing Service of Minnesota, Inc Broker Reciprocity (sm) program, allowing us to display other broker's listings on our website. All properties are subject to prior sale, change or withdrawal.



Call Affinity Real Estate

218-237-3333

info@affinityrealestate.com



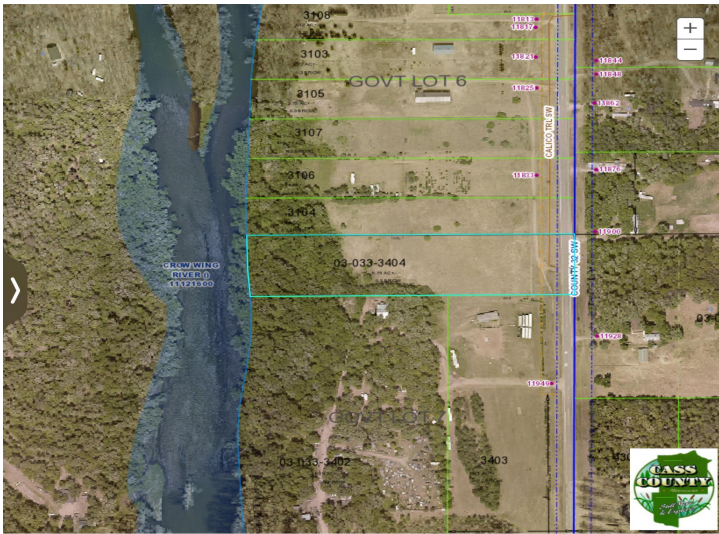
Affinity Real Estate - 600 Park Avenue South - Park Rapids MN 56470



website: www.AffinityRealEstate.com | email: info@affinityrealestate.com | office: 218-237-3333 | fax:218-237-3377



\$129,900
MLS 6539400 Lake Land
XXX Calico Trail
Motley MN 56466



website: www.AffinityRealEstate.com | email: info@affinityrealestate.com | office: 218-237-3333 | fax:218-237-3377



\$129,900
MLS 6539400 Lake Land
XXX Calico Trail
Motley MN 56466



website: www.AffinityRealEstate.com | email: info@affinityrealestate.com | office: 218-237-3333 | fax:218-237-3377

Affinity
REAL ESTATE INC

\$129,900
MLS 6539400 Lake Land
XXX Calico Trail
Motley MN 56466



website: www.AffinityRealEstate.com | email: info@affinityrealestate.com | office: 218-237-3333 | fax:218-237-3377



\$129,900
MLS 6539400 Lake Land
XXX Calico Trail
Motley MN 56466



website: www.AffinityRealEstate.com | email: info@affinityrealestate.com | office: 218-237-3333 | fax:218-237-3377



\$129,900
MLS 6539400 Lake Land
XXX Calico Trail
Motley MN 56466



website: www.AffinityRealEstate.com | email: info@affinityrealestate.com | office: 218-237-3333 | fax:218-237-3377



\$129,900
MLS 6539400 Lake Land
XXX Calico Trail
Motley MN 56466