



MLS 6539462 Residential

\$325,000

2,288 sq ft
2 bedrooms
2 baths

1122 Timbers Drive
Park Rapids MN 56470

Status: Active

Description:

Looking for living all on one level? It's here! This beautiful 2 bdr, 2 ba home conveniently located close to town, offers privacy treed lot with a fenced in patio backyard. This home offers many upgrades, gas free standing fire place and an energy efficient Natural gas combination boiler/on demand water heater. Roof was replaced in 2018. Welcome Home!

Additional Details:

Year Built	2005
Lot Acres	0.28
Lot Dimensions	130x100xIrreg
Garage Stalls	2
School District	309
Taxes	\$3,874
Taxes with Assessments	\$4,084
Tax Year	2024

Additional Features:

Fuel: Natural Gas **Heat:** Fireplace(s), Radiant Floor

Driving Directions:

Junction of Hwy 71 and 34, go East on 34 to right on Hatch Ave(next to Super 8 Motel)Go to Birch Ave take a right on Timbers Dr and take a left to 1122.



Listed By:
Patriots Choice Realty

Affinity Real Estate Inc. participates in the Regional Multiple Listing Service of Minnesota, Inc Broker Reciprocity (sm) program, allowing us to display other broker's listings on our website. All properties are subject to prior sale, change or withdrawal.



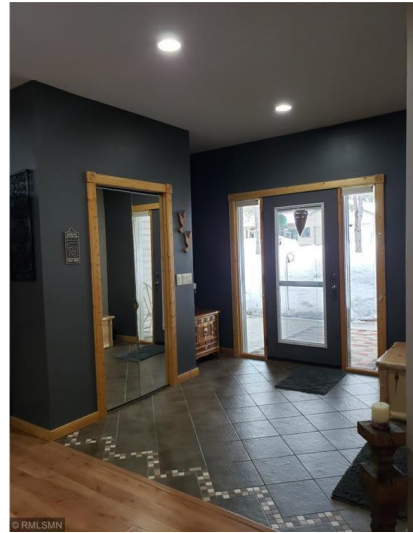
Call Affinity Real Estate

218-237-3333

info@affinityrealestate.com



Affinity Real Estate - 600 Park Avenue South - Park Rapids MN 56470



website: www.AffinityRealEstate.com | email: info@affinityrealestate.com | office: 218-237-3333 | fax:218-237-3377

Affinity
REAL ESTATE INC

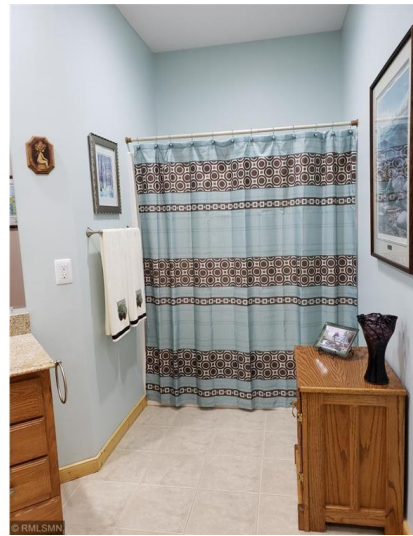
\$325,000
MLS 6539462 Residential
1122 Timbers Drive
Park Rapids MN 56470



website: www.AffinityRealEstate.com | email: info@affinityrealestate.com | office: 218-237-3333 | fax:218-237-3377



\$325,000
MLS 6539462 Residential
1122 Timbers Drive
Park Rapids MN 56470



website: www.AffinityRealEstate.com | email: info@affinityrealestate.com | office: 218-237-3333 | fax:218-237-3377



\$325,000
MLS 6539462 Residential
1122 Timbers Drive
Park Rapids MN 56470



website: www.AffinityRealEstate.com | email: info@affinityrealestate.com | office: 218-237-3333 | fax:218-237-3377



\$325,000
MLS 6539462 Residential
1122 Timbers Drive
Park Rapids MN 56470