



MLS 6539505 Residential

\$600,000

2,181 sq ft
4 bedrooms
3 baths

26508 County 4
Park Rapids MN 56470

Status: Active

Description:

Need space? This one has it all! 4 bedroom, 3 bath home on over 11 acres with multiple large garages. The home has 3 bedroom and 2 baths on the main floor with a stone fireplace, open floor plan, private primary bedroom and amazing views overlooking the lake across the road. The lower level has one bedroom, one bathroom and a large unfinished room to finish to your liking. The attached garage is 40' x 51' and the detached garage is 54' x 80'. The acreage is filled with a large variety of beautiful trees and trails waiting to enjoy.

Additional Details:

Year Built	2004
Lot Acres	11.7
Lot Dimensions	Irregular
Garage Stalls	8
School District	309
Taxes	\$3,294
Taxes with Assessments	\$3,504
Tax Year	2024

Additional Features:

Basement: Block, Egress Window(s), Full, Partially Finished **Fuel:** Propane, Wood **Garage:** 8 **Heat:** Forced Air, Fireplace(s) **Sewer:** Private Sewer, Tank with Drainage Field **Water:** Drilled, Private, Well **Air Conditioning:** Central Air

Driving Directions:

From Park Rapids, go east on Hwy 34 to County 4. Take County 4 to the property. Will be on the right.



Listed By:
Keller Williams Realty Professionals

Affinity Real Estate Inc. participates in the Regional Multiple Listing Service of Minnesota, Inc Broker Reciprocity (sm) program, allowing us to display other broker's listings on our website. All properties are subject to prior sale, change or withdrawal.



Call Affinity Real Estate

218-237-3333

info@affinityrealestate.com



Affinity Real Estate - 600 Park Avenue South - Park Rapids MN 56470



website: www.AffinityRealEstate.com | email: info@affinityrealestate.com | office: 218-237-3333 | fax:218-237-3377

Affinity
REAL ESTATE INC

\$600,000
MLS 6539505 Residential
26508 County 4
Park Rapids MN 56470



website: www.AffinityRealEstate.com | email: info@affinityrealestate.com | office: 218-237-3333 | fax:218-237-3377



\$600,000
MLS 6539505 Residential
26508 County 4
Park Rapids MN 56470



website: www.AffinityRealEstate.com | email: info@affinityrealestate.com | office: 218-237-3333 | fax:218-237-3377

Affinity
REAL ESTATE INC

\$600,000
MLS 6539505 Residential
26508 County 4
Park Rapids MN 56470



website: www.AffinityRealEstate.com | email: info@affinityrealestate.com | office: 218-237-3333 | fax:218-237-3377



\$600,000
MLS 6539505 Residential
26508 County 4
Park Rapids MN 56470



website: www.AffinityRealEstate.com | email: info@affinityrealestate.com | office: 218-237-3333 | fax: 218-237-3377

Affinity
REAL ESTATE INC

\$600,000
MLS 6539505 Residential
26508 County 4
Park Rapids MN 56470



website: www.AffinityRealEstate.com | email: info@affinityrealestate.com | office: 218-237-3333 | fax:218-237-3377



\$600,000
MLS 6539505 Residential
26508 County 4
Park Rapids MN 56470



website: www.AffinityRealEstate.com | email: info@affinityrealestate.com | office: 218-237-3333 | fax:218-237-3377



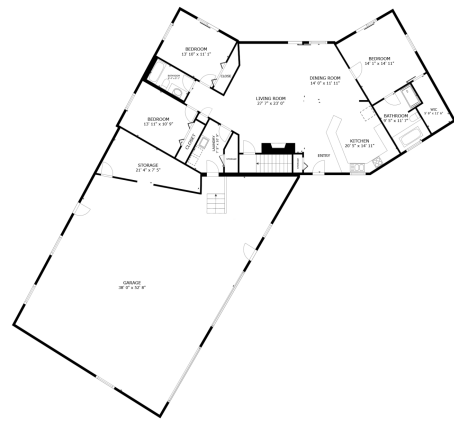
\$600,000
MLS 6539505 Residential
26508 County 4
Park Rapids MN 56470



website: www.AffinityRealEstate.com | email: info@affinityrealestate.com | office: 218-237-3333 | fax:218-237-3377



\$600,000
MLS 6539505 Residential
26508 County 4
Park Rapids MN 56470



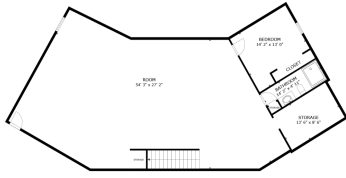
GROSS INTERNAL AREA
 FLOOR 1 3,777 SQ. FT. FLOOR 2 1,943 SQ. FT.
 EXCLUDED AREAS: GARAGE 2,745 SQ. FT.
 TOTAL: 3,975 SQ. FT.
SCALE AND DIMENSIONS ARE APPROXIMATE, ACTUAL MAY VARY.



website: www.AffinityRealEstate.com | email: info@affinityrealestate.com | office: 218-237-3333 | fax: 218-237-3377



\$600,000
 MLS 6539505 Residential
 26508 County 4
 Park Rapids MN 56470



FLOOR 1

GROSS INTERNAL AREA
FLOOR 1 1,777 SQ. FT. FLOOR 2 1,043 SQ. FT.
EXCLUDED AREAS - GARAGE 1,743 SQ. FT.
TOTAL 3,517 SQ. FT.
SIZE AND DIMENSIONS ARE APPROXIMATE, ACTUAL MAY VARY.



website: www.AffinityRealEstate.com | email: info@affinityrealestate.com | office: 218-237-3333 | fax:218-237-3377



\$600,000
MLS 6539505 Residential
26508 County 4
Park Rapids MN 56470