



MLS 6540123 Residential

\$860,000

3,438 sq ft
4 bedrooms
3 baths

50501 180th Street
Osage MN 56570

Status: Active

Description:

Welcome to Smoky Hills Lodge! A beautiful 2017 timber frame home with complete privacy on 40 acres, south of northern Minnesota's well-kept secret, the Smoky Hills, home to 3000+ acres of state and country land for hunting and ATVs! Well-situated boasting six-mile views including Wolf Lake. The open main level with vaulted living room showcases exposed upper Michigan timber trusses and two stories of windows. Kitchen presents concrete countertops with eating nook all perfectly situated around the cozy "Tulikivi" wood burning soap stone fireplace and pizza oven. 4 beds on upper level including primary suite plus large bonus room. Heated floor throughout main and oversized attached 2-car garage. Outdoor propane sauna. 35x52 shop with in-floor heat, large 3", thick 20'x10' overhead door, epoxy floors, plus office with AC, bathroom and lean-to. Additional 38x12 storage shed with electricity and concrete. Home and shop have fiber internet! Perfect home in the hills or vacation getaway!

Additional Details:


| | |
|------------------------|-----------|
| Year Built | 2017 |
| Lot Acres | 40 |
| Lot Dimensions | 1350x1314 |
| Garage Stalls | 2 |
| School District | 821 |
| Taxes | \$2,838 |
| Taxes with Assessments | \$2,898 |
| Tax Year | 2023 |

Additional Features:

Fuel: Electric, Propane **Heat:** Ductless Mini-Split, Fireplace(s), Heat Pump, Radiant Floor

Driving Directions:

From Park Rapids south on Hwy 71, right on CoRd 14, left CoRd 47, right on 180th St, left on 510 Ave and immediate right on 180th St. Driveway straight off when the road curves right

 Listed By:
Coldwell Banker Realty

Affinity Real Estate Inc. participates in the Regional Multiple Listing Service of Minnesota, Inc Broker Reciprocity (sm) program, allowing us to display other broker's listings on our website. All properties are subject to prior sale, change or withdrawal.

 **Call Affinity Real Estate**
218-237-3333
info@affinityrealestate.com

  
Affinity Real Estate - 600 Park Avenue South - Park Rapids MN 56470



website: www.AffinityRealEstate.com | email: info@affinityrealestate.com | office: 218-237-3333 | fax:218-237-3377



\$860,000
MLS 6540123 Residential
50501 180th Street
Osage MN 56570



website: www.AffinityRealEstate.com | email: info@affinityrealestate.com | office: 218-237-3333 | fax: 218-237-3377

Affinity
REAL ESTATE INC

\$860,000
MLS 6540123 Residential
50501 180th Street
Osage MN 56570



website: www.AffinityRealEstate.com | email: info@affinityrealestate.com | office: 218-237-3333 | fax:218-237-3377

Affinity
REAL ESTATE INC

\$860,000
MLS 6540123 Residential
50501 180th Street
Osage MN 56570



website: www.AffinityRealEstate.com | email: info@affinityrealestate.com | office: 218-237-3333 | fax: 218-237-3377

Affinity
REAL ESTATE INC

\$860,000
MLS 6540123 Residential
50501 180th Street
Osage MN 56570



website: www.AffinityRealEstate.com | email: info@affinityrealestate.com | office: 218-237-3333 | fax: 218-237-3377

Affinity
REAL ESTATE INC

\$860,000
MLS 6540123 Residential
50501 180th Street
Osage MN 56570



website: www.AffinityRealEstate.com | email: info@affinityrealestate.com | office: 218-237-3333 | fax:218-237-3377



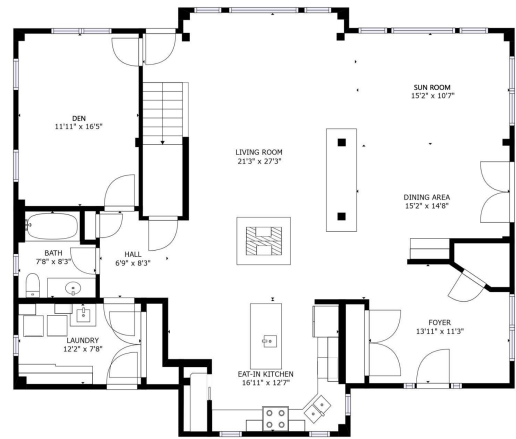
\$860,000
MLS 6540123 Residential
50501 180th Street
Osage MN 56570



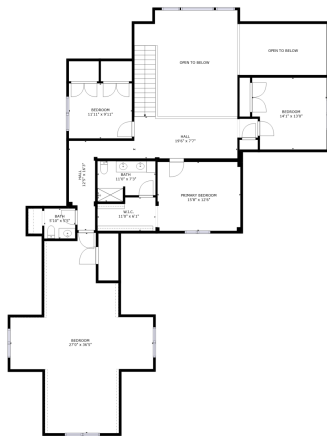
website: www.AffinityRealEstate.com | email: info@affinityrealestate.com | office: 218-237-3333 | fax: 218-237-3377

Affinity
REAL ESTATE INC

\$860,000
MLS 6540123 Residential
50501 180th Street
Osage MN 56570



FLOOR 1
 GROSS INTERNAL AREA FLOOR 1: 1728 sq. ft. FLOOR 2: 1725 sq. ft.
 EXCLUDED AREA: REDUCED HEADROOM BELOW 1.9m: 24 sq. ft.
 TOTAL: 3453 sq. ft.
 SIZES AND DIMENSIONS ARE APPROXIMATE, ACTUAL MAY VARY.



FLOOR 2
 GROSS INTERNAL AREA FLOOR 1: 1728 sq. ft. FLOOR 2: 1725 sq. ft.
 EXCLUDED AREA: REDUCED HEADROOM BELOW 1.9m: 24 sq. ft.
 TOTAL: 3453 sq. ft.
 SIZES AND DIMENSIONS ARE APPROXIMATE, ACTUAL MAY VARY.



[website: www.AffinityRealEstate.com](http://www.AffinityRealEstate.com) | [email: info@affinityrealestate.com](mailto:info@affinityrealestate.com) | office: 218-237-3333 | fax:218-237-3377



\$860,000
 MLS 6540123 Residential
 50501 180th Street
 Osage MN 56570



website: www.AffinityRealEstate.com | email: info@affinityrealestate.com | office: 218-237-3333 | fax:218-237-3377



\$860,000
MLS 6540123 Residential
50501 180th Street
Osage MN 56570



website: www.AffinityRealEstate.com | email: info@affinityrealestate.com | office: 218-237-3333 | fax:218-237-3377



\$860,000
MLS 6540123 Residential
50501 180th Street
Osage MN 56570



website: www.AffinityRealEstate.com | email: info@affinityrealestate.com | office: 218-237-3333 | fax: 218-237-3377



\$860,000
MLS 6540123 Residential
50501 180th Street
Osage MN 56570



website: www.AffinityRealEstate.com | email: info@affinityrealestate.com | office: 218-237-3333 | fax:218-237-3377



\$860,000
MLS 6540123 Residential
50501 180th Street
Osage MN 56570