



MLS 6540362 Lake Land

\$159,900

Description:

If you are looking for your own piece of serenity on beautiful Leech Lake, "Muskie Capital of the World" look no further than this perfect 2.2 acre lot with Deeded access to Leech Lake on Shingobee Bay. This lot is studded with mature trees, SE views of Shingobee Bay amidst mother nature and ready for you to build your new home and enjoy endless opportunities for relaxation and recreation. Whether you seek an investment opportunity or ideal spot to build, this PRIME LOCATION is minutes away from charming Walker, close to boat launch, excellent access to the Paul Bunyan State bike trail. Trail down to your shared dock on Shingobee Bay-Leech Lake.

Additional Details:

Lot Acres	2.2
Lot Dimensions	169x399x226x125x100
School District	113
Taxes	\$438
Taxes with Assessments	\$438
Tax Year	2024

Additional Features:

Driving Directions:

From Walker, 371 South to right on Shingobee Road NW and left on Raspberry Trail NW.



Listed By:
Kurilla Real Estate LTD

Affinity Real Estate Inc. participates in the Regional Multiple Listing Service of Minnesota, Inc Broker Reciprocity (sm) program, allowing us to display other broker's listings on our website. All properties are subject to prior sale, change or withdrawal.



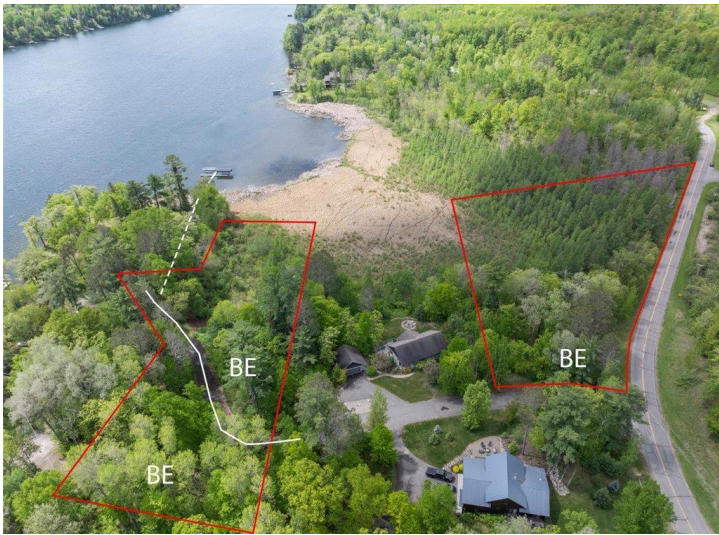
Call Affinity Real Estate

218-237-3333

info@affinityrealestate.com



Affinity Real Estate - 600 Park Avenue South - Park Rapids MN 56470



website: www.AffinityRealEstate.com | email: info@affinityrealestate.com | office: 218-237-3333 | fax:218-237-3377

Affinity
REAL ESTATE INC

\$159,900
MLS 6540362 Lake Land
TBD-Lot 3 Raspberry Trail
Walker MN 56484



website: www.AffinityRealEstate.com | email: info@affinityrealestate.com | office: 218-237-3333 | fax:218-237-3377



\$159,900
MLS 6540362 Lake Land
TBD-Lot 3 Raspberry Trail
Walker MN 56484



website: www.AffinityRealEstate.com | email: info@affinityrealestate.com | office: 218-237-3333 | fax:218-237-3377



\$159,900
MLS 6540362 Lake Land
TBD-Lot 3 Raspberry Trail
Walker MN 56484



website: www.AffinityRealEstate.com | email: info@affinityrealestate.com | office: 218-237-3333 | fax:218-237-3377



\$159,900
MLS 6540362 Lake Land
TBD-Lot 3 Raspberry Trail
Walker MN 56484



website: www.AffinityRealEstate.com | email: info@affinityrealestate.com | office: 218-237-3333 | fax:218-237-3377



\$159,900
MLS 6540362 Lake Land
TBD-Lot 3 Raspberry Trail
Walker MN 56484