



MLS 6540632 Lake Home

\$499,900

1,799 sq ft
3 bedrooms
2 baths

34846 Valhalla Road
Pequot Lakes MN 56472

Waterfront: Bass Lake (Ideal Twp.)

Status: Active

Description:

Welcome to your year-round retreat! 145 ft of level lakeshore, on a 1.45 acre lot; appreciate the seclusion & privacy this wooded property has to offer. Updated exterior with newer roof & siding. Stunning views from the upper deck and the concrete patio. Relax in the hot tub and enjoy the nature around you. Two canvas structures; perfect for your storage needs. Upper level has an open living room/dining & kitchen with vaulted pine ceilings & pine walls. Dining faces the lake; enjoy meals with a view! Kitchen has a good amount of cabinets & counter space. Three nice-sized main level bedrooms with a full bath steps away. Bathroom is updated & spacious w/beautifully tiled shower. Lower level is a walk-out w/access to the patio. Relax in the family or rec rooms. Convenient updated ¾ bathroom & laundry area. Converted garage space serves as a heated workshop & mancave. Don't miss this opportunity to own a lake home on Bass Lake part of the popular Ossawinamakee Chain of Lakes!

Additional Details:

Year Built	1984
Lot Acres	1.44
Lot Dimensions	150x385
School District	186
Taxes	\$1,924
Taxes with Assessments	\$1,924
Tax Year	2023

Additional Features:

Basement: Block, Full, Partially Finished, Storage Space **Fuel:** Natural Gas **Heat:** Forced Air **Sewer:** Private Sewer, Septic System Compliant - Yes **Water:** Private **Air Conditioning:** None

Driving Directions:

Travel to Ideal Corners, turn south on 39, turn north on Valhalla Rd, lake home is located on the right



Listed By:
Central MN Realty LLC

Affinity Real Estate Inc. participates in the Regional Multiple Listing Service of Minnesota, Inc Broker Reciprocity (sm) program, allowing us to display other broker's listings on our website. All properties are subject to prior sale, change or withdrawal.



Call Affinity Real Estate

218-237-3333

info@affinityrealestate.com



Affinity Real Estate - 600 Park Avenue South - Park Rapids MN 56470



website: www.AffinityRealEstate.com | email: info@affinityrealestate.com | office: 218-237-3333 | fax:218-237-3377



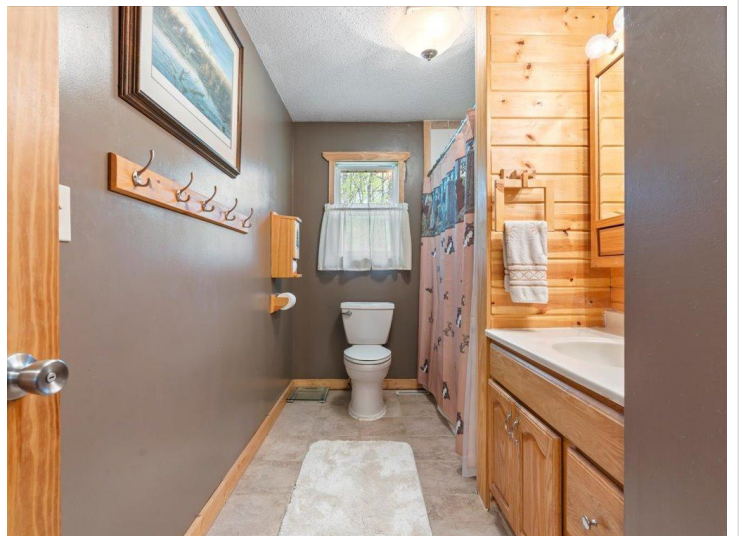
\$499,900
MLS 6540632 Lake Home
34846 Valhalla Road
Pequot Lakes MN 56472



website: www.AffinityRealEstate.com | email: info@affinityrealestate.com | office: 218-237-3333 | fax: 218-237-3377

Affinity
REAL ESTATE INC

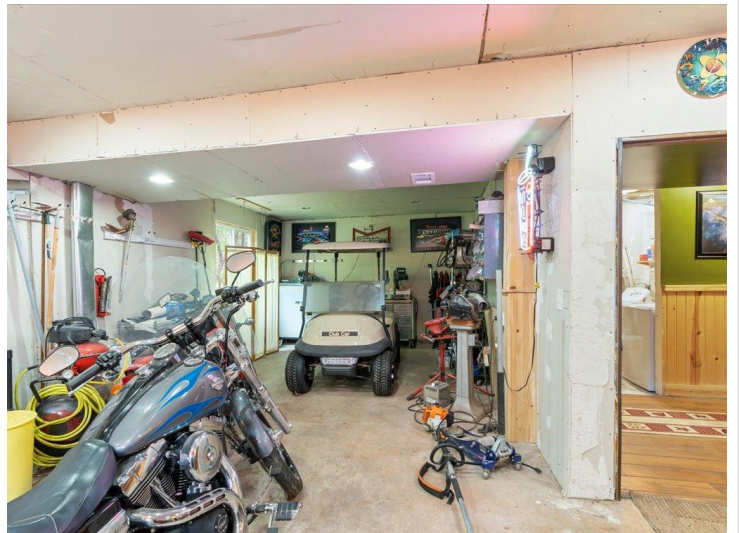
\$499,900
MLS 6540632 Lake Home
34846 Valhalla Road
Pequot Lakes MN 56472



website: www.AffinityRealEstate.com | email: info@affinityrealestate.com | office: 218-237-3333 | fax:218-237-3377

Affinity
REAL ESTATE INC

\$499,900
MLS 6540632 Lake Home
34846 Valhalla Road
Pequot Lakes MN 56472



website: www.AffinityRealEstate.com | email: info@affinityrealestate.com | office: 218-237-3333 | fax: 218-237-3377

Affinity
REAL ESTATE INC

\$499,900
MLS 6540632 Lake Home
34846 Valhalla Road
Pequot Lakes MN 56472



website: www.AffinityRealEstate.com | email: info@affinityrealestate.com | office: 218-237-3333 | fax:218-237-3377



\$499,900
MLS 6540632 Lake Home
34846 Valhalla Road
Pequot Lakes MN 56472



website: www.AffinityRealEstate.com | email: info@affinityrealestate.com | office: 218-237-3333 | fax:218-237-3377



\$499,900
MLS 6540632 Lake Home
34846 Valhalla Road
Pequot Lakes MN 56472



website: www.AffinityRealEstate.com | email: info@affinityrealestate.com | office: 218-237-3333 | fax:218-237-3377



\$499,900
MLS 6540632 Lake Home
34846 Valhalla Road
Pequot Lakes MN 56472