



MLS 6540740 Residential

\$154,000

884 sq ft
2 bedrooms
1 baths

318 Jefferson Avenue
Pine River MN 56474

Status: Closed

Description:

What a great location. Walk to stores, restaurants, bakery or bank. Walk to the river park or even the bowling alley, it's all here in Pine River. Jefferson Manor consists of six condos with private entrances and attached garages. All lawn work, snow and rubbish removal are services included in the association fee. This condo is easy living. Brand new windows, new flooring, new boiler heat, new natural gas, new siding and new appliances. Taxes reflect current rental status.

Additional Details:

Year Built	1976
Lot Acres	0.04
Lot Dimensions	26x60
Garage Stalls	1
School District	2174
Taxes	\$1,436
Taxes with Assessments	\$1,502
Tax Year	2023

Additional Features:

Basement: Block, Daylight/Lookout Windows, Full, Unfinished **Fuel:** Electric, Natural Gas **Garage:** 1 **Heat:** Baseboard, Boiler, Hot Water
Sewer: City Sewer/Connected **Water:** City Water/Connected **Air Conditioning:** Wall Unit(s)

Driving Directions:

371 north to Pine River. Take second right after going through lights and the condo is second block on the right.



Listed By:
Heartland Real Estate

Affinity Real Estate Inc. participates in the Regional Multiple Listing Service of Minnesota, Inc Broker Reciprocity (sm) program, allowing us to display other broker's listings on our website. All properties are subject to prior sale, change or withdrawal.



Call Affinity Real Estate

218-237-3333

info@affinityrealestate.com



Affinity Real Estate - 600 Park Avenue South - Park Rapids MN 56470



website: www.AffinityRealEstate.com | email: info@affinityrealestate.com | office: 218-237-3333 | fax: 218-237-3377



\$154,000
 MLS 6540740 Residential
 318 Jefferson Avenue
 Pine River MN 56474



website: www.AffinityRealEstate.com | email: info@affinityrealestate.com | office: 218-237-3333 | fax: 218-237-3377



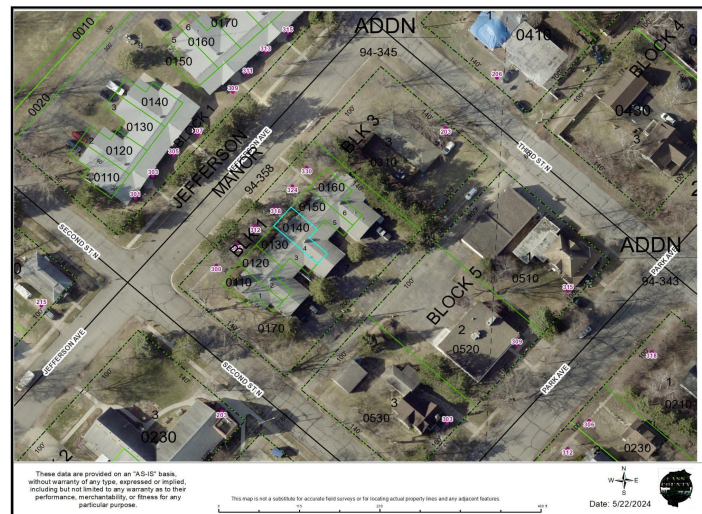
\$154,000
 MLS 6540740 Residential
 318 Jefferson Avenue
 Pine River MN 56474



website: www.AffinityRealEstate.com | email: info@affinityrealestate.com | office: 218-237-3333 | fax: 218-237-3377



\$154,000
MLS 6540740 Residential
318 Jefferson Avenue
Pine River MN 56474



website: www.AffinityRealEstate.com | email: info@affinityrealestate.com | office: 218-237-3333 | fax: 218-237-3377

Affinity
REAL ESTATE INC

\$154,000
MLS 6540740 Residential
318 Jefferson Avenue
Pine River MN 56474



website: www.AffinityRealEstate.com | email: info@affinityrealestate.com | office: 218-237-3333 | fax:218-237-3377



\$154,000
MLS 6540740 Residential
318 Jefferson Avenue
Pine River MN 56474