



MLS 6540761 Lake Land

\$65,000

Description:

Located off a paved county road provides easy access year-round to this building lot. The grounds offer a stand of mature pine, gradual elevation to the lake, and a level building site with 236 feet of shore along the OHW line with 4.7 acres of land.

Additional Details:

| | |
|------------------------|---------------------|
| Lot Acres | 4.74 |
| Lot Dimensions | 236x347x906x224x637 |
| School District | 118 |
| Taxes | \$240 |
| Taxes with Assessments | \$306 |
| Tax Year | 2024 |

Additional Features:

Driving Directions:

From Longville - MN-84 north. Crossover MN-200 and continue north on CR-8 to Lake Breeze Ln NE, to the subject parcel. New road may not appear on GPS. Call agent for further directions.



Listed By:
Heartland Real Estate

Affinity Real Estate Inc. participates in the Regional Multiple Listing Service of Minnesota, Inc Broker Reciprocity (sm) program, allowing us to display other broker's listings on our website. All properties are subject to prior sale, change or withdrawal.



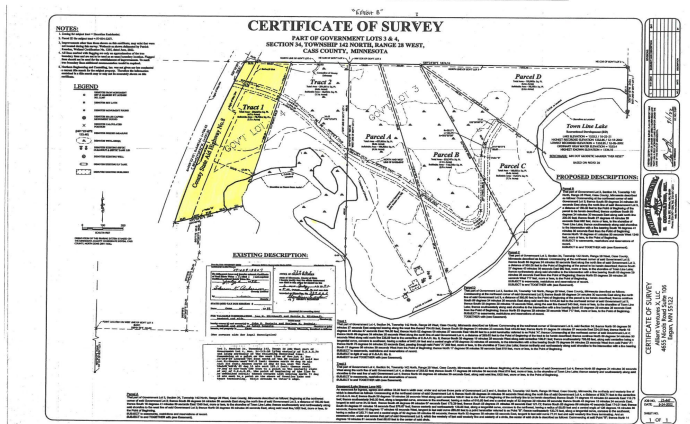
Call Affinity Real Estate

218-237-3333

info@affinityrealestate.com



Affinity Real Estate - 600 Park Avenue South - Park Rapids MN 56470



website: www.AffinityRealEstate.com | email: info@affinityrealestate.com | office: 218-237-3333 | fax: 218-237-3377



\$65,000
 MLS 6540761 Lake Land
 Tract 1 Lake Breeze Lane
 Longville MN 56655