



MLS 6541229 Land

\$725,000

32.34 Acres
Plat Designed

1800 County Road 131
Detroit Lakes MN 56501

Status: Active

Description:

Development land in Detroit Lakes City Limits. This development is on the edge of town just an half mile from the Floyd Lake access. This land is best suited for multi family, apartments, townhomes or PUD. Delineation, soil tests and the Cities' Preliminary Engineering study are available. Land is ready for development now, the preliminary work is complete.

Additional Details:

Lot Acres	32.34
Lot Dimensions	32
School District	22
Taxes	\$1,024
Taxes with Assessments	\$1,024
Tax Year	2023

Additional Features:

Driving Directions:

North on Hwy 59 to Tower Rd. Right on Tower Rd to 131 land is on the corner of Tower and 131.



Listed By:
The Real Estate Company of Detroit Lakes

Affinity Real Estate Inc. participates in the Regional Multiple Listing Service of Minnesota, Inc Broker Reciprocity (sm) program, allowing us to display other broker's listings on our website. All properties are subject to prior sale, change or withdrawal.



Call Affinity Real Estate

218-237-3333

info@affinityrealestate.com



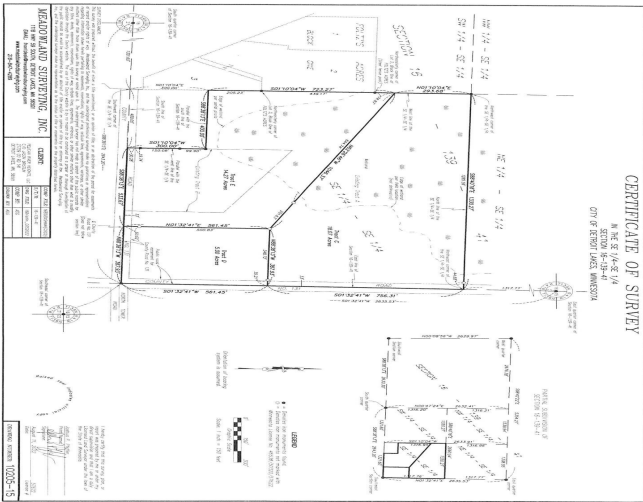
Affinity Real Estate - 600 Park Avenue South - Park Rapids MN 56470



website: www.AffinityRealEstate.com | email: info@affinityrealestate.com | office: 218-237-3333 | fax:218-237-3377



\$725,000
MLS 6541229 Land
1800 County Road 131
Detroit Lakes MN 56501



website: www.AffinityRealEstate.com | email: info@affinityrealestate.com | office: 218-237-3333 | fax: 218-237-3377



\$725,000
 MLS 6541229 Land
 1800 County Road 131
 Detroit Lakes MN 56501