



MLS 6541548 Residential

**\$549,900**

3,064 sq ft  
3 bedrooms  
2 baths

17695 County Road 7  
Verndale MN 56481

Status: Pending

**Description:**

Experience the epitome of rustic luxury living in this custom-built big timber log home nestled on 38 acres of serene countryside. Boasting three spacious bedrooms and two baths, this home offers an inviting open floor plan accentuated by Hickory cabinets and Fir hardwood floors. Floor-to-ceiling windows in the great room provide breathtaking panoramic views, while Hunter Douglas window coverings offer both privacy and style. Stay cozy with a gas fireplace and Steffers off-peak electric furnace. The detached 56 x 40 insulated shop features in-floor heating, 3 overhead doors, and an office with a 3/4 bath. Perfect for horse enthusiasts or hobby farmers seeking tranquility and seclusion. Schedule your private viewing to experience the feel of prime country living.

**Additional Details:**

Year Built	2004
Lot Acres	38.64
Lot Dimensions	1327x281x1266x1541
Garage Stalls	4
School District	818
Taxes	\$902
Taxes with Assessments	\$902
Tax Year	2023

**Additional Features:**

**Basement:** Block, Finished, Full, Partially Finished **Fuel:** Electric, Propane **Garage:** 4 **Heat:** Dual, Forced Air, Fireplace(s) **Sewer:** Private Sewer, Septic System Compliant - Yes, Tank with Drainage Field **Water:** Submersible - 4 Inch, Drilled, Private, Well **Air Conditioning:** Central Air

**Driving Directions:**

North on 23 from Verndale, turn east on county road 7 to property.



Listed By:  
eXp Realty

Affinity Real Estate Inc. participates in the Regional Multiple Listing Service of Minnesota, Inc Broker Reciprocity (sm) program, allowing us to display other broker's listings on our website. All properties are subject to prior sale, change or withdrawal.



Call Affinity Real Estate

**218-237-3333**

[info@affinityrealestate.com](mailto:info@affinityrealestate.com)



Affinity Real Estate - 600 Park Avenue South - Park Rapids MN 56470



website: [www.AffinityRealEstate.com](http://www.AffinityRealEstate.com) | email: [info@affinityrealestate.com](mailto:info@affinityrealestate.com) | office: 218-237-3333 | fax:218-237-3377



**\$549,900**  
MLS 6541548 Residential  
17695 County Road 7  
Verndale MN 56481



website: [www.AffinityRealEstate.com](http://www.AffinityRealEstate.com) | email: [info@affinityrealestate.com](mailto:info@affinityrealestate.com) | office: 218-237-3333 | fax:218-237-3377



**\$549,900**  
MLS 6541548 Residential  
17695 County Road 7  
Verndale MN 56481



website: [www.AffinityRealEstate.com](http://www.AffinityRealEstate.com) | email: [info@affinityrealestate.com](mailto:info@affinityrealestate.com) | office: 218-237-3333 | fax:218-237-3377

**Affinity**  
REAL ESTATE INC

**\$549,900**  
MLS 6541548 Residential  
17695 County Road 7  
Verndale MN 56481



website: [www.AffinityRealEstate.com](http://www.AffinityRealEstate.com) | email: [info@affinityrealestate.com](mailto:info@affinityrealestate.com) | office: 218-237-3333 | fax:218-237-3377



**\$549,900**  
MLS 6541548 Residential  
17695 County Road 7  
Verndale MN 56481



website: [www.AffinityRealEstate.com](http://www.AffinityRealEstate.com) | email: [info@affinityrealestate.com](mailto:info@affinityrealestate.com) | office: 218-237-3333 | fax: 218-237-3377



**\$549,900**  
MLS 6541548 Residential  
17695 County Road 7  
Verndale MN 56481



website: [www.AffinityRealEstate.com](http://www.AffinityRealEstate.com) | email: [info@affinityrealestate.com](mailto:info@affinityrealestate.com) | office: 218-237-3333 | fax:218-237-3377

**Affinity**  
REAL ESTATE INC

**\$549,900**  
MLS 6541548 Residential  
17695 County Road 7  
Verndale MN 56481

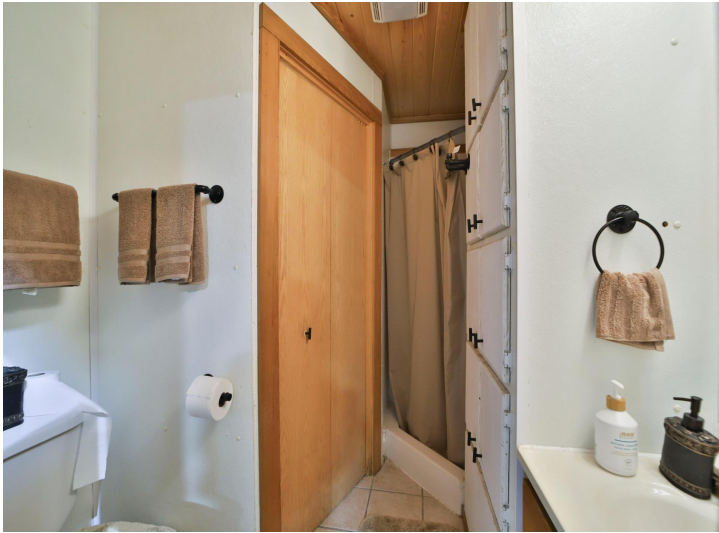


website: [www.AffinityRealEstate.com](http://www.AffinityRealEstate.com) | email: [info@affinityrealestate.com](mailto:info@affinityrealestate.com) | office: 218-237-3333 | fax: 218-237-3377

**Affinity**  
REAL ESTATE INC

**\$549,900**  
MLS 6541548 Residential  
17695 County Road 7  
Verndale MN 56481





website: [www.AffinityRealEstate.com](http://www.AffinityRealEstate.com) | email: [info@affinityrealestate.com](mailto:info@affinityrealestate.com) | office: 218-237-3333 | fax:218-237-3377

**Affinity**  
REAL ESTATE INC

**\$549,900**  
MLS 6541548 Residential  
17695 County Road 7  
Verndale MN 56481



website: [www.AffinityRealEstate.com](http://www.AffinityRealEstate.com) | email: [info@affinityrealestate.com](mailto:info@affinityrealestate.com) | office: 218-237-3333 | fax:218-237-3377



**\$549,900**  
MLS 6541548 Residential  
17695 County Road 7  
Verndale MN 56481



website: [www.AffinityRealEstate.com](http://www.AffinityRealEstate.com) | email: [info@affinityrealestate.com](mailto:info@affinityrealestate.com) | office: 218-237-3333 | fax:218-237-3377



**\$549,900**  
MLS 6541548 Residential  
17695 County Road 7  
Verndale MN 56481