



MLS 6541655 Lake Home

\$949,500

3,094 sq ft
5 bedrooms
4 baths

8038 Lost Lake Road
Nisswa MN 56468

Waterfront: Spider Lake (Lake
Shore City)

Status: Active

Description:

This lake home is NOW completed NEW construction Spider Lake Preserve on the Gull Lake. It is located at 8038 Lost Lake Rd #120. On top of this lake home, 3 lots remain from a total of 9. This community is a small & private single-family lake home community in the City of Lake Shore. This 35-acre community is nestled amongst Lost Lake Lodge, Causeway on Gull, Bar Harbor, Zorbaz, golf courses, and so much more. This private community has its own dock area, lake side patio and firepit area, pickleball court, private path system and fine homes built by Thomas Allen Homes. This walk-out rambler home 5bd/4ba includes front and rear decks, lower level patio, landscaping, 2 fireplaces, full bar in LL, tile shower custom cabinets, interior beam work, and more. There is still time to enjoy Gull Lake this year and for many to come!

Additional Details:

Year Built	2024
Lot Acres	0.12
Lot Dimensions	64x83 Build Pad
Garage Stalls	3
School District	181
Taxes	(unreported)
Taxes with Assessments	(unreported)
Tax Year	2024

Additional Features:

Basement: Finished, Walkout **Fuel:** Natural Gas **Garage:** 3 **Heat:** Forced Air, Fireplace(s) **Sewer:** City Sewer/Connected **Water:** Shared System, Well **Air Conditioning:** Central Air

Driving Directions:

From Highway 371 in Nisswa, take Country Rd 77 West to Zorbaz. Turn Right on Lost Lake Road to Community on your right.



Listed By:
Edina Realty, Inc.

Affinity Real Estate Inc. participates in the Regional Multiple Listing Service of Minnesota, Inc Broker Reciprocity (sm) program, allowing us to display other broker's listings on our website. All properties are subject to prior sale, change or withdrawal.



Call Affinity Real Estate

218-237-3333

info@affinityrealestate.com



Affinity Real Estate - 600 Park Avenue South - Park Rapids MN 56470



website: www.AffinityRealEstate.com | email: info@affinityrealestate.com | office: 218-237-3333 | fax: 218-237-3377

Affinity
REAL ESTATE INC

\$949,500
MLS 6541655 Lake Home
8038 Lost Lake Road
Nisswa MN 56468



website: www.AffinityRealEstate.com | email: info@affinityrealestate.com | office: 218-237-3333 | fax:218-237-3377

Affinity
REAL ESTATE INC

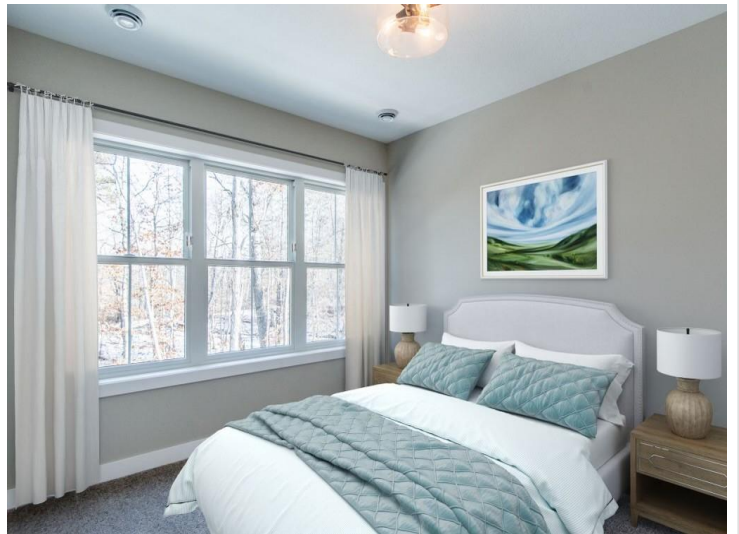
\$949,500
MLS 6541655 Lake Home
8038 Lost Lake Road
Nisswa MN 56468



website: www.AffinityRealEstate.com | email: info@affinityrealestate.com | office: 218-237-3333 | fax: 218-237-3377

Affinity
REAL ESTATE INC

\$949,500
MLS 6541655 Lake Home
8038 Lost Lake Road
Nisswa MN 56468



website: www.AffinityRealEstate.com | email: info@affinityrealestate.com | office: 218-237-3333 | fax:218-237-3377

Affinity
REAL ESTATE INC

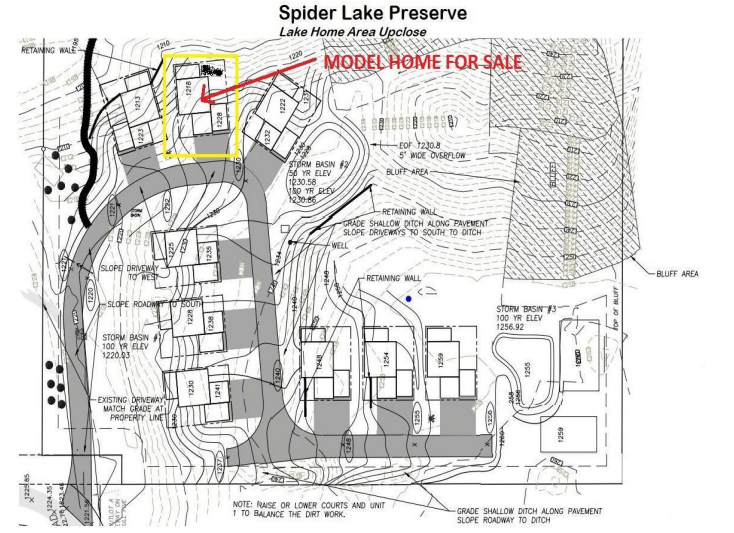
\$949,500
MLS 6541655 Lake Home
8038 Lost Lake Road
Nisswa MN 56468



website: www.AffinityRealEstate.com | email: info@affinityrealestate.com | office: 218-237-3333 | fax:218-237-3377



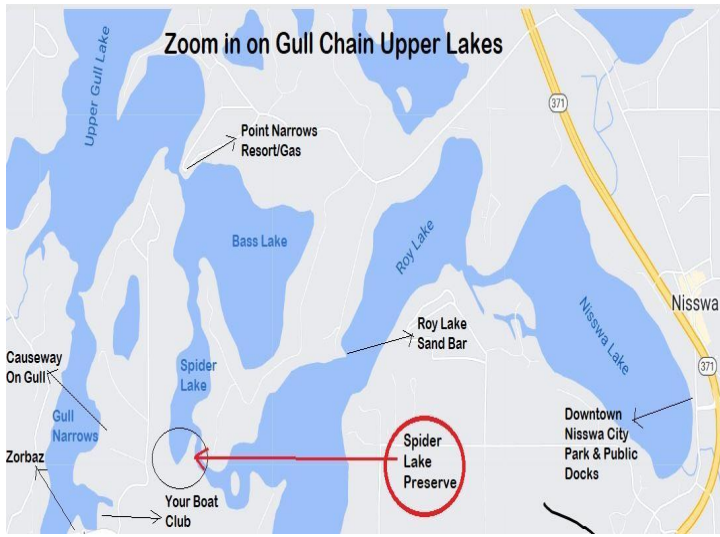
\$949,500
MLS 6541655 Lake Home
8038 Lost Lake Road
Nisswa MN 56468



website: www.AffinityRealEstate.com | email: info@affinityrealestate.com | office: 218-237-3333 | fax:218-237-3377



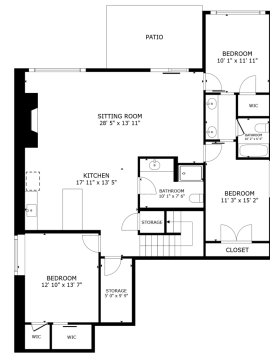
\$949,500
 MLS 6541655 Lake Home
 8038 Lost Lake Road
 Nisswa MN 56468



website: www.AffinityRealEstate.com | email: info@affinityrealestate.com | office: 218-237-3333 | fax:218-237-3377



\$949,500
 MLS 6541655 Lake Home
 8038 Lost Lake Road
 Nisswa MN 56468



FLOOR 1

GROSS INTERNAL AREA
 FLOOR 1 1,415 sq.ft., FLOOR 2 1,564 sq.ft.,
 EXCLUDED AREAS: PATIO 147 sq.ft., GARAGE 737 sq.ft., DECK 248 sq.ft., DECK 125 sq.ft.,
 TOTAL: 2,979 sq.ft.
SIZE AND DIMENSIONS ARE APPROXIMATE, ACTUAL MAY VARY.



FLOOR 2

GROSS INTERNAL AREA
 FLOOR 1 1,415 sq.ft., FLOOR 2 1,564 sq.ft.,
 EXCLUDED AREAS: PATIO 147 sq.ft., GARAGE 737 sq.ft., DECK 248 sq.ft., DECK 125 sq.ft.,
 TOTAL: 2,979 sq.ft.
SIZE AND DIMENSIONS ARE APPROXIMATE, ACTUAL MAY VARY.



website: www.AffinityRealEstate.com | email: info@affinityrealestate.com | office: 218-237-3333 | fax: 218-237-3377



\$949,500
 MLS 6541655 Lake Home
 8038 Lost Lake Road
 Nisswa MN 56468