



MLS 6542234 Lake Land

**\$469,900**

**Description:**

Hard to find West facing lake lot on Long Lake in Park Rapids, MN!! Long Lake is a 1926 acre lake with a max depth of 135' and 9' water clarity. This lot features easy elevation to the 125' of lake frontage with 1.39 acres to build the home of your dreams!! This lot has been surveyed and mostly cleared and ready for your building plans. This lot is located just minutes from all the conveniences that Park Rapids area has to offer!! Don't miss out on this incredible opportunity to build the home or cabin of your dreams!!

**Additional Details:**

Lot Acres	1.39
Lot Dimensions	125x420x129x448
School District	309
Taxes	\$1,686
Taxes with Assessments	\$1,686
Tax Year	2024

**Additional Features:**

**Driving Directions:**

From 34/71 in Park Rapids, East on 34 to a right on County Road 20. Follow to a right on 150th Street to a left on Circle Pines Drive to the property on right.



Listed By:  
Edina Realty, Inc.

Affinity Real Estate Inc. participates in the Regional Multiple Listing Service of Minnesota, Inc Broker Reciprocity (sm) program, allowing us to display other broker's listings on our website. All properties are subject to prior sale, change or withdrawal.



**Call Affinity Real Estate**

**218-237-3333**

**info@affinityrealestate.com**



**Affinity Real Estate - 600 Park Avenue South - Park Rapids MN 56470**



website: [www.AffinityRealEstate.com](http://www.AffinityRealEstate.com) | email: [info@affinityrealestate.com](mailto:info@affinityrealestate.com) | office: 218-237-3333 | fax:218-237-3377



**\$469,900**  
MLS 6542234 Lake Land  
XXXXX Circle Pines Drive  
Park Rapids MN 56470



website: [www.AffinityRealEstate.com](http://www.AffinityRealEstate.com) | email: [info@affinityrealestate.com](mailto:info@affinityrealestate.com) | office: 218-237-3333 | fax:218-237-3377



**\$469,900**  
MLS 6542234 Lake Land  
XXXXX Circle Pines Drive  
Park Rapids MN 56470



**Parcel Viewer**  
 Hubbard County - 301 Court Ave, Park Rapids, MN 56470  
 Created 5/22/2024 at 08:31 AM

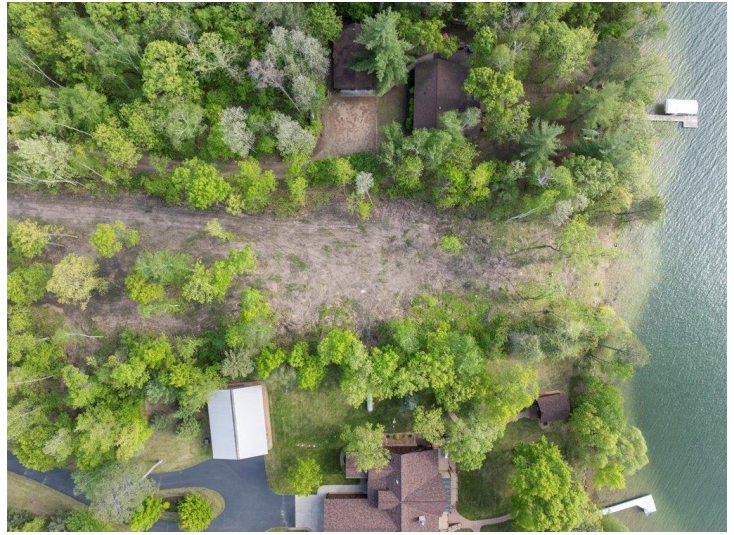
website: [www.AffinityRealEstate.com](http://www.AffinityRealEstate.com) | email: [info@affinityrealestate.com](mailto:info@affinityrealestate.com) | office: 218-237-3333 | fax: 218-237-3377



**\$469,900**  
 MLS 6542234 Lake Land  
 XXXXX Circle Pines Drive  
 Park Rapids MN 56470



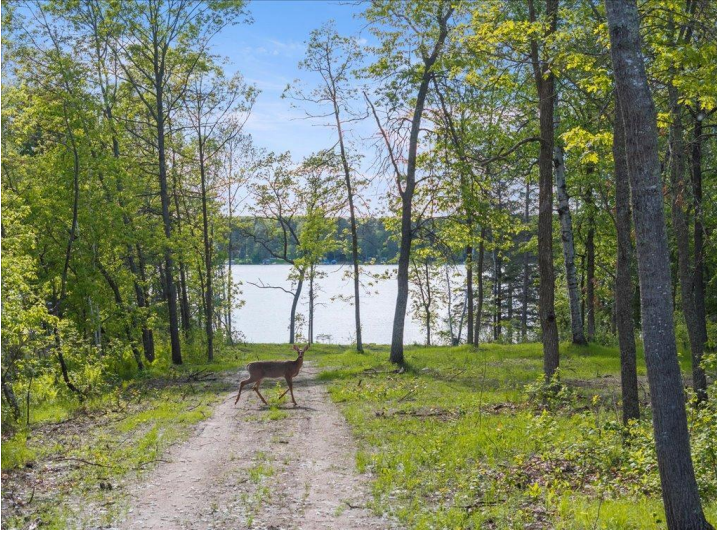
**Parcel Viewer**  
 Hubbard County - 301 Court Ave, Park Rapids, MN 56470  
 Created 5/22/2024 at 08:32 AM



website: [www.AffinityRealEstate.com](http://www.AffinityRealEstate.com) | email: [info@affinityrealestate.com](mailto:info@affinityrealestate.com) | office: 218-237-3333 | fax: 218-237-3377



**\$469,900**  
 MLS 6542234 Lake Land  
 XXXXX Circle Pines Drive  
 Park Rapids MN 56470



website: [www.AffinityRealEstate.com](http://www.AffinityRealEstate.com) | email: [info@affinityrealestate.com](mailto:info@affinityrealestate.com) | office: 218-237-3333 | fax:218-237-3377



**\$469,900**

MLS 6542234 Lake Land  
XXXXX Circle Pines Drive  
Park Rapids MN 56470