



MLS 6542891 Lake Land

**\$69,750**

**Description:**

Discover your dream retreat on Birch Lake in Hackensack, MN! This unimproved lake access lot offers a dedicated boat slip. Enjoy endless recreational opportunities with the nearby Heartland Bike Trail and snowmobile trails. Close to Hackensack's amenities, this lot is perfect for your future lake home or cabin. Embrace the tranquility and outdoor adventures of Minnesota's lake country. Contact us today to explore this unique opportunity!

Agent is related to the seller

**Additional Details:**

Lot Acres	0.91
Lot Dimensions	164x233x160x277
School District	113
Taxes	\$142
Taxes with Assessments	\$142
Tax Year	2023

**Additional Features:**

**Driving Directions:**

From 371, take lower ten mile lake road west approximately 2.5 miles, left on butternut trail. Turn left on butternut court. Lot for sale is between addresses 3988 and 4300



Listed By:  
Dwell Realty Group LLC

Affinity Real Estate Inc. participates in the Regional Multiple Listing Service of Minnesota, Inc Broker Reciprocity (sm) program, allowing us to display other broker's listings on our website. All properties are subject to prior sale, change or withdrawal.



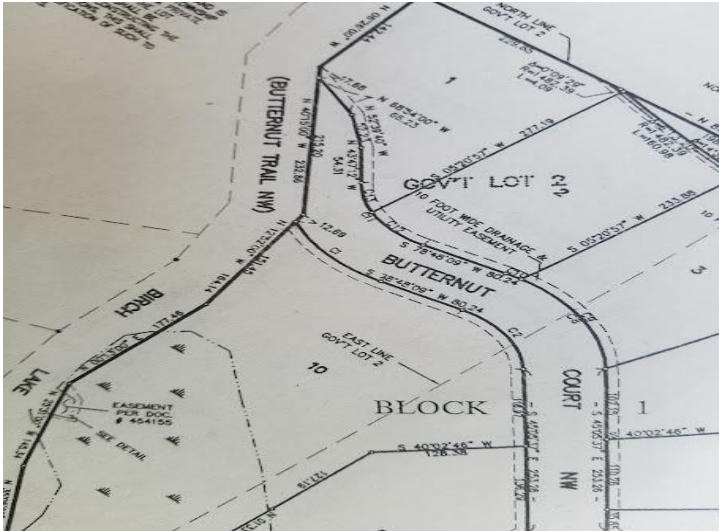
**Call Affinity Real Estate**

**218-237-3333**

**info@affinityrealestate.com**



**Affinity Real Estate - 600 Park Avenue South - Park Rapids MN 56470**



website: [www.AffinityRealEstate.com](http://www.AffinityRealEstate.com) | email: [info@affinityrealestate.com](mailto:info@affinityrealestate.com) | office: 218-237-3333 | fax:218-237-3377



**\$69,750**  
MLS 6542891 Lake Land  
Lot 2 Butternut Court  
Hackensack MN 56452



website: [www.AffinityRealEstate.com](http://www.AffinityRealEstate.com) | email: [info@affinityrealestate.com](mailto:info@affinityrealestate.com) | office: 218-237-3333 | fax:218-237-3377



**\$69,750**  
MLS 6542891 Lake Land  
Lot 2 Butternut Court  
Hackensack MN 56452