



MLS 6542933 Lake Land

**\$220,000**

**Description:**

Looking for the perfect piece of land with 325 feet of lakeshore? Look no more! This beautiful 7 acre wooded property is located 24 min east of Detroit Lakes and 24 min from Park Rapids on Shell Lake. This lot has many opportunities for a peaceful getaway to camp or build your dream home. Shoreline is rocky/sandy. It includes many mature and new growth trees including red oaks, sugar maples, white pines and many more! We can't forget about the fish! Shell Lake is known for pan fish, bass, walleye, northern pike and many more!!

**Additional Details:**

Lot Acres	7
Lot Dimensions	304920
School District	23
Taxes	\$822
Taxes with Assessments	\$822
Tax Year	2023

**Additional Features:**

**Driving Directions:**

From State HWY 34 between Detroit Lakes and Park Rapids, Go north on Martha's RD, approx. 2 miles, go left on 455th Ave about 1 mile, left on S. Shell Lk RD, 1.5 miles, left on Ida's RD for 1/4 Mile to property. (maps will bring you past, watch for blue number)



Listed By:  
HomeSmart Adventure Realty

Affinity Real Estate Inc. participates in the Regional Multiple Listing Service of Minnesota, Inc Broker Reciprocity (sm) program, allowing us to display other broker's listings on our website. All properties are subject to prior sale, change or withdrawal.



**Call Affinity Real Estate**

**218-237-3333**

**info@affinityrealestate.com**



**Affinity Real Estate - 600 Park Avenue South - Park Rapids MN 56470**



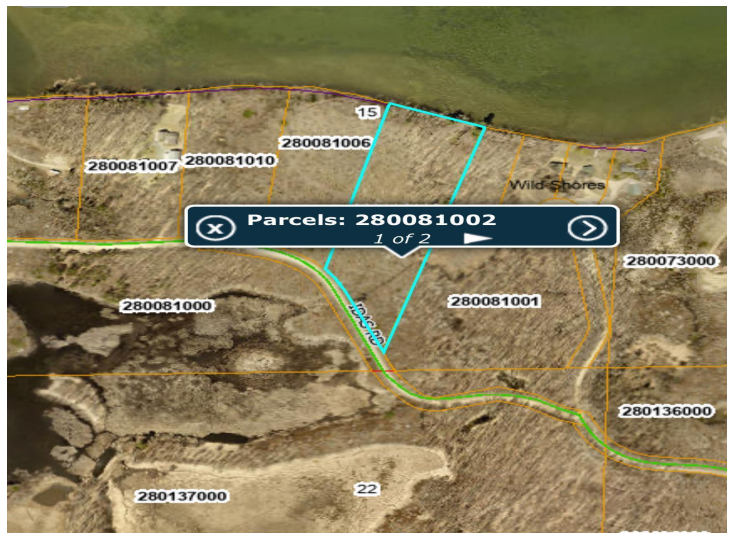


website: [www.AffinityRealEstate.com](http://www.AffinityRealEstate.com) | email: [info@affinityrealestate.com](mailto:info@affinityrealestate.com) | office: 218-237-3333 | fax:218-237-3377



**\$220,000**  
MLS 6542933 Lake Land  
44698 Idas Road  
Osage MN 56570



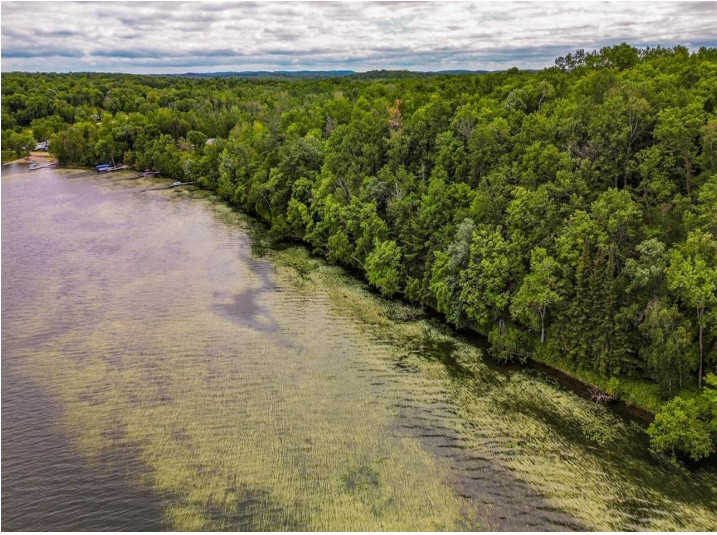


website: [www.AffinityRealEstate.com](http://www.AffinityRealEstate.com) | email: [info@affinityrealestate.com](mailto:info@affinityrealestate.com) | office: 218-237-3333 | fax:218-237-3377



**\$220,000**  
MLS 6542933 Lake Land  
44698 Idas Road  
Osage MN 56570





website: [www.AffinityRealEstate.com](http://www.AffinityRealEstate.com) | email: [info@affinityrealestate.com](mailto:info@affinityrealestate.com) | office: 218-237-3333 | fax:218-237-3377



**\$220,000**  
MLS 6542933 Lake Land  
44698 Idas Road  
Osage MN 56570