



MLS 6544648 Lake Land

\$299,000

Description:

Enjoy peace and quite lake life on this 3.5 acre wooded Pickerel Lake lot! 437+/- feet of rocky/sandy frontage! Located at the end of 205th street only 12 miles from Detroit Lakes and close to Cotton Lake! Build your dream home or cabin and enjoy all that Pickerel Lake has to offer. Clear water, good fishing, and a beautiful area.

Additional Details:

Lot Acres	3.5
Lot Dimensions	3.5 acres
School District	23
Taxes	\$1,718
Taxes with Assessments	\$15,681,718
Tax Year	2024

Additional Features:

Driving Directions:

From Detroit Lakes go East on State Hwy 34 for 7.5 miles, turn left and head North on Co Hwy 29 for 2 miles, turn left on Co hwy 32 for 1.5 miles, turn left on 205th street, follow and stay to the left go to the property on the end of 205th.



Listed By:
Counselor Realty of Detroit Lakes

Affinity Real Estate Inc. participates in the Regional Multiple Listing Service of Minnesota, Inc Broker Reciprocity (sm) program, allowing us to display other broker's listings on our website. All properties are subject to prior sale, change or withdrawal.



Call Affinity Real Estate

218-237-3333

info@affinityrealestate.com



Affinity Real Estate - 600 Park Avenue South - Park Rapids MN 56470



website: www.AffinityRealEstate.com | email: info@affinityrealestate.com | office: 218-237-3333 | fax:218-237-3377



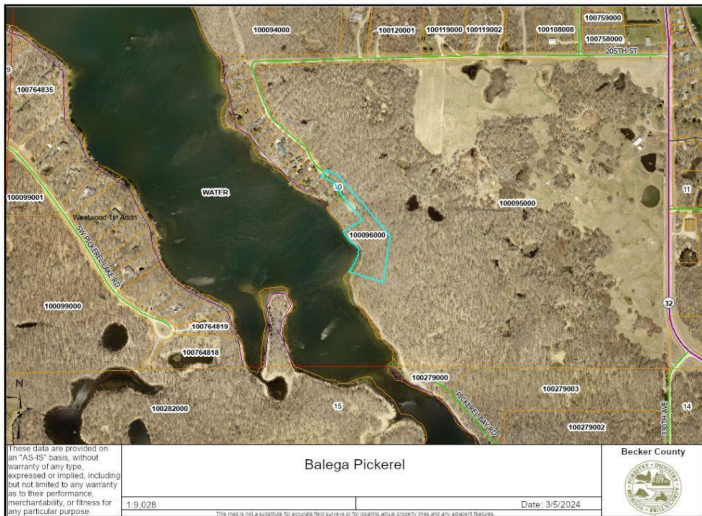
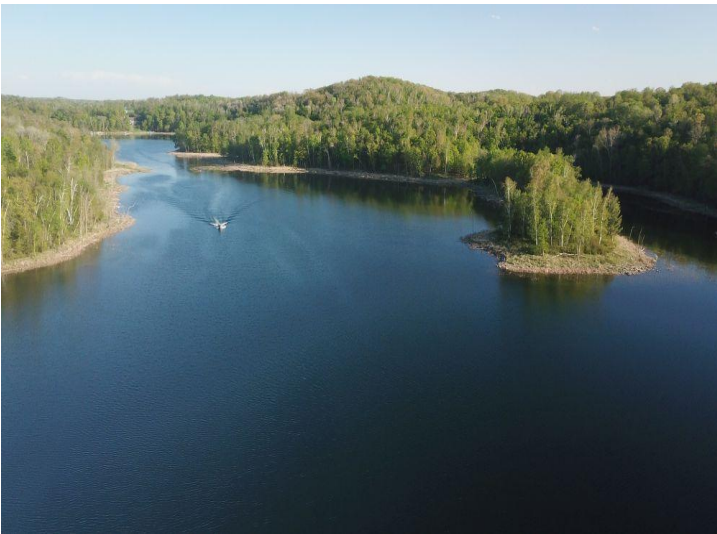
\$299,000
MLS 6544648 Lake Land
xxxx 205th Street
Rochert MN 56578



website: www.AffinityRealEstate.com | email: info@affinityrealestate.com | office: 218-237-3333 | fax:218-237-3377



\$299,000
MLS 6544648 Lake Land
xxxx 205th Street
Rochert MN 56578



website: www.AffinityRealEstate.com | email: info@affinityrealestate.com | office: 218-237-3333 | fax: 218-237-3377



\$299,000
 MLS 6544648 Lake Land
 xxxx 205th Street
 Rochert MN 56578