



MLS 6544693 Land

**\$153,000**

10.33 Acres  
Raw Land

TBD Akerson Road  
Pequot Lakes MN 56472

Status: Hold

**Description:**

Location is everything on this beautifully wooded 10-acre parcel in Pequot Lakes. Just a short jaunt off 371, this land is ready for someone to bring their vision to it and build their dream homestead just minutes from town. Located off a paved road with beautiful properties surrounding you, you're sure to fall in love with the possibilities here on Akerson Road.

**Additional Details:**

Lot Acres	10.33
Lot Dimensions	1342x337
School District	186
Taxes	\$226
Taxes with Assessments	\$226
Tax Year	2023

**Additional Features:**

**Driving Directions:**

TAKE HWY 371 FROM PEQUOT LAKES, TURN ON CO. ROAD #112. THEN, TURN RIGHT ON AKERSON ROAD



Listed By:  
Real Broker, LLC

Affinity Real Estate Inc. participates in the Regional Multiple Listing Service of Minnesota, Inc Broker Reciprocity (sm) program, allowing us to display other broker's listings on our website. All properties are subject to prior sale, change or withdrawal.



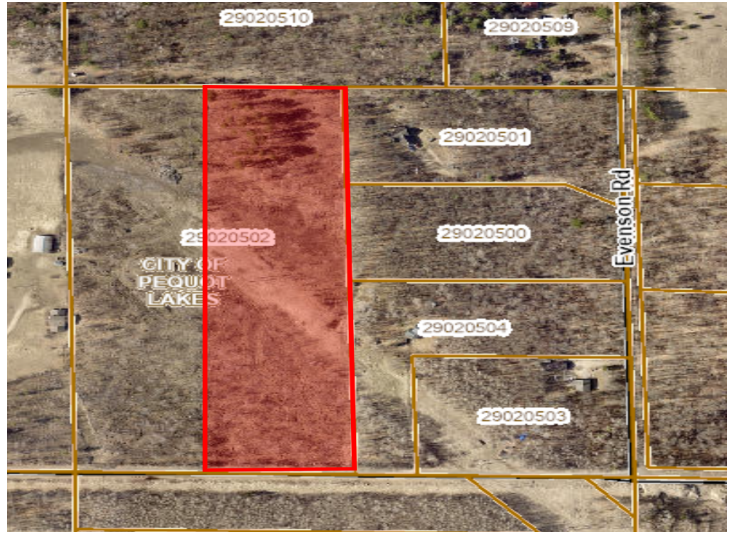
Call Affinity Real Estate

**218-237-3333**

[info@affinityrealestate.com](mailto:info@affinityrealestate.com)



Affinity Real Estate - 600 Park Avenue South - Park Rapids MN 56470



website: [www.AffinityRealEstate.com](http://www.AffinityRealEstate.com) | email: [info@affinityrealestate.com](mailto:info@affinityrealestate.com) | office: 218-237-3333 | fax:218-237-3377



**\$153,000**  
MLS 6544693 Land  
TBD Akerson Road  
Pequot Lakes MN 56472



website: [www.AffinityRealEstate.com](http://www.AffinityRealEstate.com) | email: [info@affinityrealestate.com](mailto:info@affinityrealestate.com) | office: 218-237-3333 | fax:218-237-3377



**\$153,000**  
MLS 6544693 Land  
TBD Akerson Road  
Pequot Lakes MN 56472