



MLS 6544888 Land

\$93,000

5.05 Acres
Raw Land

xxx walker lake drive
Richville MN 56576

Status: Active

Description:

Welcome to your own private oasis! This stunning 5 acre lot boasts views of Long Lake, offering a sense of serenity and tranquility like no other. The buildable land provides endless opportunities to create the home of your dreams, surrounded by lush greenery and picturesque scenery. Whether you're looking for a peaceful escape from the hustle and bustle of city life or searching for the perfect spot to build your forever home, this property has it all. Don't miss out on the chance to own your piece of paradise in Otter Tail County! Deed restrictions on property.

Additional Details:

Lot Acres	5.05
Lot Dimensions	650x333
School District	549
Taxes	\$308
Taxes with Assessments	\$308
Tax Year	2024

Additional Features:

Driving Directions:

from ottertail,#1 to long lake road to walker drive to property.



Listed By:
Boll Realty

Affinity Real Estate Inc. participates in the Regional Multiple Listing Service of Minnesota, Inc Broker Reciprocity (sm) program, allowing us to display other broker's listings on our website. All properties are subject to prior sale, change or withdrawal.



Call Affinity Real Estate

218-237-3333

info@affinityrealestate.com



Affinity Real Estate - 600 Park Avenue South - Park Rapids MN 56470



website: www.AffinityRealEstate.com | email: info@affinityrealestate.com | office: 218-237-3333 | fax:218-237-3377



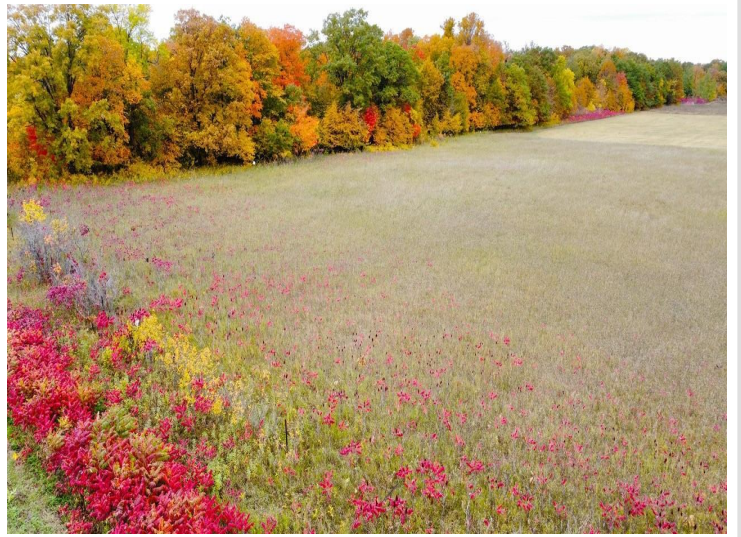
\$93,000
MLS 6544888 Land
xxx walker lake drive
Richville MN 56576



website: www.AffinityRealEstate.com | email: info@affinityrealestate.com | office: 218-237-3333 | fax:218-237-3377



\$93,000
MLS 6544888 Land
xxx walker lake drive
Richville MN 56576



website: www.AffinityRealEstate.com | email: info@affinityrealestate.com | office: 218-237-3333 | fax:218-237-3377



\$93,000
MLS 6544888 Land
xxx walker lake drive
Richville MN 56576