



MLS 6544953 Residential

\$689,900

3,294 sq ft
4 bedrooms
4 baths

31280 Wildwood Lane
Pequot Lakes MN 56472

Status: Active

Description:

Experience unparalleled tranquility in this functional family home, nestled on seven wooded acres just minutes from Breezy Point's hockey arena and resort. Enjoy nature's beauty from a beautiful porch, deck, and a sitting room. Stay connected with high-speed internet and enjoy the comfort of natural gas.

Inside, discover four bedrooms, four bathrooms, multiple living spaces, a dedicated office, and a chef's kitchen with custom cabinetry and ample counter space. Two gas fireplaces create a warm and inviting atmosphere.

Recent mechanical updates ensure worry-free living. Explore wooded trails, relax on porches, or store your toys in the attached 3-car and detached 2-car garages.

Located near schools, lakes, and amenities, this move-in ready home offers luxury, comfort, and natural splendor. Schedule your private viewing today.

Additional Details:

Year Built	1995
Lot Acres	7.52
Lot Dimensions	507x435 IRR
Garage Stalls	3
School District	186
Taxes	\$3,657
Taxes with Assessments	\$3,682
Tax Year	2024

Additional Features:

Basement: Full, Walkout **Fuel:** Natural Gas **Garage:** 3 **Heat:** Forced Air **Sewer:** Private Sewer, Septic System Compliant - Yes **Water:** Well **Air Conditioning:** Central Air

Driving Directions:

On MN 371, take CR 11 exit toward Pequot Lakes/Breezy Point, at the traffic light turn left onto Wildwood Lane.



Listed By:
Positive Realty

Affinity Real Estate Inc. participates in the Regional Multiple Listing Service of Minnesota, Inc Broker Reciprocity (sm) program, allowing us to display other broker's listings on our website. All properties are subject to prior sale, change or withdrawal.



Call Affinity Real Estate

218-237-3333

info@affinityrealestate.com



Affinity Real Estate - 600 Park Avenue South - Park Rapids MN 56470



website: www.AffinityRealEstate.com | email: info@affinityrealestate.com | office: 218-237-3333 | fax:218-237-3377

Affinity
REAL ESTATE INC

\$689,900
MLS 6544953 Residential
31280 Wildwood Lane
Pequot Lakes MN 56472



website: www.AffinityRealEstate.com | email: info@affinityrealestate.com | office: 218-237-3333 | fax:218-237-3377



\$689,900
MLS 6544953 Residential
31280 Wildwood Lane
Pequot Lakes MN 56472



website: www.AffinityRealEstate.com | email: info@affinityrealestate.com | office: 218-237-3333 | fax:218-237-3377

Affinity
REAL ESTATE INC

\$689,900
MLS 6544953 Residential
31280 Wildwood Lane
Pequot Lakes MN 56472



website: www.AffinityRealEstate.com | email: info@affinityrealestate.com | office: 218-237-3333 | fax:218-237-3377

Affinity
REAL ESTATE INC

\$689,900
MLS 6544953 Residential
31280 Wildwood Lane
Pequot Lakes MN 56472



website: www.AffinityRealEstate.com | email: info@affinityrealestate.com | office: 218-237-3333 | fax:218-237-3377

Affinity
REAL ESTATE INC

\$689,900
MLS 6544953 Residential
31280 Wildwood Lane
Pequot Lakes MN 56472



website: www.AffinityRealEstate.com | email: info@affinityrealestate.com | office: 218-237-3333 | fax:218-237-3377

Affinity
REAL ESTATE INC

\$689,900
MLS 6544953 Residential
31280 Wildwood Lane
Pequot Lakes MN 56472



FLOOR 1

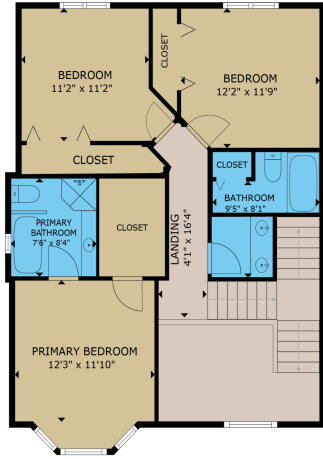
©2020 AVERAL AREA
 BASEMENT: 1,112 sq. ft. (TOTAL: 1,451 sq. ft.)
 CLOSET: 100 sq. ft.
 TOTAL: 3,727 sq. ft.
 SIZES AND DIMENSIONS ARE APPROXIMATE. ACTUAL MAY VARY.



website: www.AffinityRealEstate.com | email: info@affinityrealestate.com | office: 218-237-3333 | fax: 218-237-3377

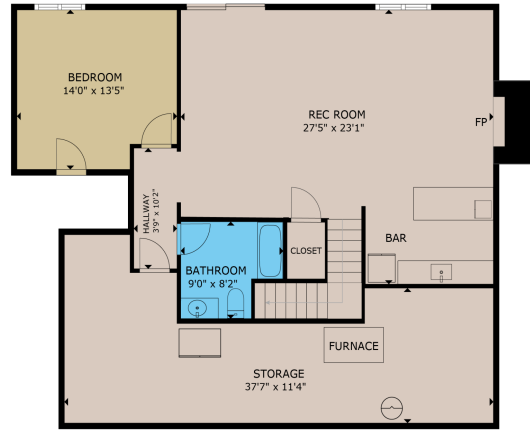


\$689,900
 MLS 6544953 Residential
 31280 Wildwood Lane
 Pequot Lakes MN 56472



FLOOR 2

GROSS INTERNAL AREA
 BASEMENT: 1,322 sq. ft. FLOOR 1: 1,451 sq. ft.
 FLOOR 2: 1,946 sq. ft.
 TOTAL: 3,723 sq. ft.
SIZES AND DIMENSIONS ARE APPROXIMATE. ACTUAL MAY VARY.



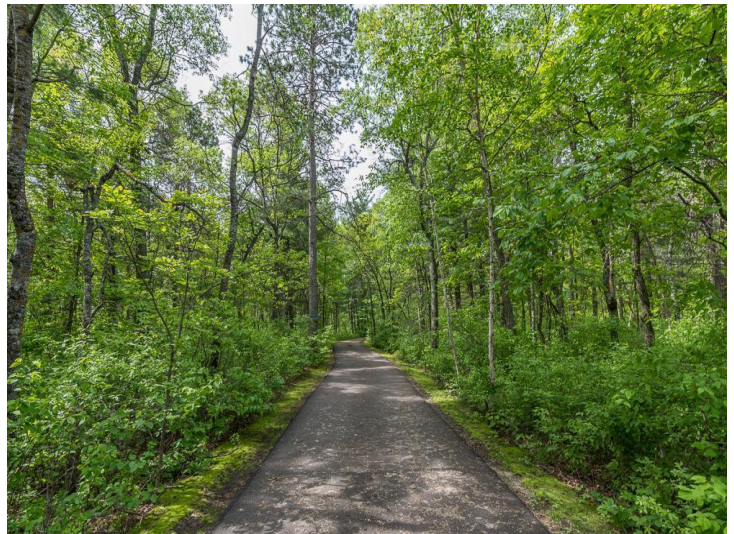
BASEMENT

GROSS INTERNAL AREA
 BASEMENT: 1,322 sq. ft. FLOOR 1: 1,451 sq. ft.
 FLOOR 2: 1,946 sq. ft.
 TOTAL: 3,723 sq. ft.
SIZES AND DIMENSIONS ARE APPROXIMATE. ACTUAL MAY VARY.



These data are provided on an "AS-IS" basis, without warranty of any type, expressed or implied, including but not limited to any warranty as to their performance, merchantability or fitness for any particular purpose.

Date: 5/30/2024 Time: 12:14 PM



website: www.AffinityRealEstate.com | email: info@affinityrealestate.com | office: 218-237-3333 | fax: 218-237-3377



\$689,900
 MLS 6544953 Residential
 31280 Wildwood Lane
 Pequot Lakes MN 56472



website: www.AffinityRealEstate.com | email: info@affinityrealestate.com | office: 218-237-3333 | fax:218-237-3377



\$689,900
MLS 6544953 Residential
31280 Wildwood Lane
Pequot Lakes MN 56472



website: www.AffinityRealEstate.com | email: info@affinityrealestate.com | office: 218-237-3333 | fax: 218-237-3377

Affinity
REAL ESTATE INC

\$689,900
MLS 6544953 Residential
31280 Wildwood Lane
Pequot Lakes MN 56472



website: www.AffinityRealEstate.com | email: info@affinityrealestate.com | office: 218-237-3333 | fax:218-237-3377



\$689,900
MLS 6544953 Residential
31280 Wildwood Lane
Pequot Lakes MN 56472