



MLS 6545428 Residential

**\$489,900**

2,152 sq ft  
4 bedrooms  
3 baths

15675 209th Avenue  
Park Rapids MN 56470

Status: Pending

**Description:**

This beautiful 4-bedroom, 3-bathroom home includes an open kitchen, dining, and living room area with stunning views of the surrounding acreage. The home offers ample storage with 2 bedrooms and a full bathroom upstairs, an attached double garage, a partial basement, and a spacious 30x100 heated shop building. The property, previously used for horses, features some level riding areas, lovely oak trees, and excellent deer hunting opportunities. It also comes with an outdoor wood boiler and is situated on over 20 acres of land. Conveniently located between Park Rapids and Nevis, it's just a short drive to the Crow Wing chain of lakes. The property is sure to leave a lasting impression, especially with its new roof and updated septic system.

**Additional Details:**

Year Built	2001
Lot Acres	26.24
Lot Dimensions	866x1320
Garage Stalls	2
School District	309
Taxes	\$2,464
Taxes with Assessments	\$2,464
Tax Year	2023

**Additional Features:**

**Basement:** Partial, Slab, Wood **Fuel:** Propane, Wood **Garage:** 2 **Heat:** Boiler, Hot Water, Outdoor Boiler **Sewer:** Tank with Drainage Field **Water:** Submersible - 4 Inch **Air Conditioning:** None

**Driving Directions:**

From 34/71 in Park Rapids East on 34 to County 11. Right on County 11 to County 17 to 209th Ave. Right on 209th to property on right.



Listed By:  
Wolff & Simon Real Estate

Affinity Real Estate Inc. participates in the Regional Multiple Listing Service of Minnesota, Inc Broker Reciprocity (sm) program, allowing us to display other broker's listings on our website. All properties are subject to prior sale, change or withdrawal.



**Call Affinity Real Estate**

**218-237-3333**

**info@affinityrealestate.com**



**Affinity Real Estate - 600 Park Avenue South - Park Rapids MN 56470**



website: [www.AffinityRealEstate.com](http://www.AffinityRealEstate.com) | email: [info@affinityrealestate.com](mailto:info@affinityrealestate.com) | office: 218-237-3333 | fax:218-237-3377

**Affinity**  
REAL ESTATE INC

**\$489,900**  
MLS 6545428 Residential  
15675 209th Avenue  
Park Rapids MN 56470



website: [www.AffinityRealEstate.com](http://www.AffinityRealEstate.com) | email: [info@affinityrealestate.com](mailto:info@affinityrealestate.com) | office: 218-237-3333 | fax: 218-237-3377

**Affinity**  
REAL ESTATE INC

**\$489,900**  
MLS 6545428 Residential  
15675 209th Avenue  
Park Rapids MN 56470



website: [www.AffinityRealEstate.com](http://www.AffinityRealEstate.com) | email: [info@affinityrealestate.com](mailto:info@affinityrealestate.com) | office: 218-237-3333 | fax:218-237-3377

**Affinity**  
REAL ESTATE INC

**\$489,900**  
MLS 6545428 Residential  
15675 209th Avenue  
Park Rapids MN 56470



website: [www.AffinityRealEstate.com](http://www.AffinityRealEstate.com) | email: [info@affinityrealestate.com](mailto:info@affinityrealestate.com) | office: 218-237-3333 | fax:218-237-3377

**Affinity**  
REAL ESTATE INC

**\$489,900**  
MLS 6545428 Residential  
15675 209th Avenue  
Park Rapids MN 56470



website: [www.AffinityRealEstate.com](http://www.AffinityRealEstate.com) | email: [info@affinityrealestate.com](mailto:info@affinityrealestate.com) | office: 218-237-3333 | fax:218-237-3377



**\$489,900**  
MLS 6545428 Residential  
15675 209th Avenue  
Park Rapids MN 56470



website: [www.AffinityRealEstate.com](http://www.AffinityRealEstate.com) | email: [info@affinityrealestate.com](mailto:info@affinityrealestate.com) | office: 218-237-3333 | fax:218-237-3377

**Affinity**  
REAL ESTATE INC

**\$489,900**  
MLS 6545428 Residential  
15675 209th Avenue  
Park Rapids MN 56470



website: [www.AffinityRealEstate.com](http://www.AffinityRealEstate.com) | email: [info@affinityrealestate.com](mailto:info@affinityrealestate.com) | office: 218-237-3333 | fax:218-237-3377

**Affinity**  
REAL ESTATE INC

**\$489,900**  
MLS 6545428 Residential  
15675 209th Avenue  
Park Rapids MN 56470

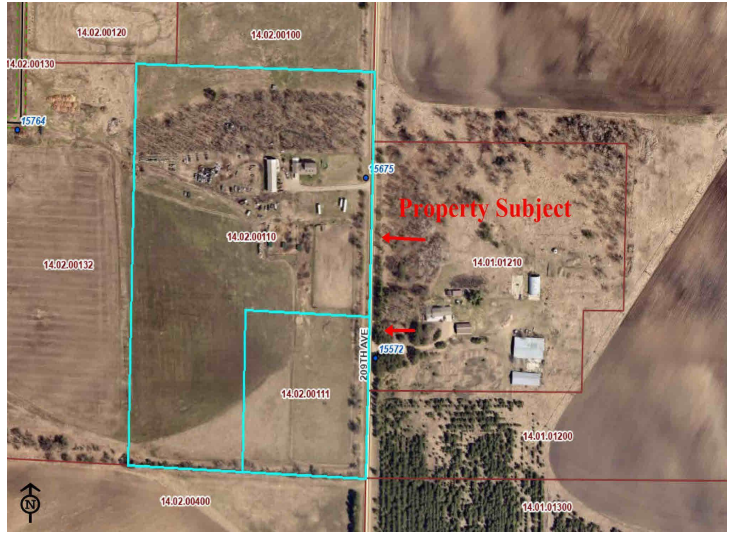




website: [www.AffinityRealEstate.com](http://www.AffinityRealEstate.com) | email: [info@affinityrealestate.com](mailto:info@affinityrealestate.com) | office: 218-237-3333 | fax:218-237-3377



**\$489,900**  
MLS 6545428 Residential  
15675 209th Avenue  
Park Rapids MN 56470



website: [www.AffinityRealEstate.com](http://www.AffinityRealEstate.com) | email: [info@affinityrealestate.com](mailto:info@affinityrealestate.com) | office: 218-237-3333 | fax:218-237-3377



**\$489,900**  
MLS 6545428 Residential  
15675 209th Avenue  
Park Rapids MN 56470