



MLS 6545453 Residential

\$439,800

3,344 sq ft
5 bedrooms
4 baths

201 Little Field Court
Bemidji MN 56601

Status: Active

Description:

Looking for country living close to Bemidji MN? You have landed at the right spot, welcome to Country Lane Estates. This 3000 + sq ft 4/5 bedroom 4 bath home rests on a private 1.9 acre fenced corner lot with apple trees and plenty of other hardwoods. The main floor has an open floor plan, large living room, vaulted ceilings, electric fireplace, dining room, and kitchen with a large walk-in pantry all tied together with lvt and hardwood floors. Your main floor primary bedroom greets you with vaulted ceilings, double sinks, and a walk-in shower. Also the main floor of the home has 2 more bedrooms and or office space. Another 3/4 bath with a zero entry custom tile shower, main floor laundry, 1/2 bath and a large mudroom right off the heated and finished garage. You will find 2 more large bedrooms in the basement, a 2nd rec room, plenty of storage in the utility room. Enjoy the mowed trails, fenced gardens, privacy fencing, a chain link fence in the backyard, front & rear covered decks!!

Additional Details:

Year Built	1998
Lot Acres	1.9
Lot Dimensions	70x100x260x70x230x24070x70x180
Garage Stalls	3
School District	31
Taxes	\$4,258
Taxes with Assessments	\$4,258
Tax Year	2024

Additional Features:

Basement: Block, Daylight/Lookout Windows, Egress Window(s), Finished, Full, Tile Shower **Fuel:** Electric, Natural Gas **Garage:** 3 **Heat:** Baseboard, Dual, Forced Air, Fireplace(s) **Sewer:** Private Sewer, Septic System Compliant - Yes **Water:** Submersible - 4 Inch, Private, Well **Air Conditioning:** Central Air

Driving Directions:

West On 5th St to Becida RD SW Left onto Little Field CT SW



Listed By:
218 Real Estate

Affinity Real Estate Inc. participates in the Regional Multiple Listing Service of Minnesota, Inc Broker Reciprocity (sm) program, allowing us to display other broker's listings on our website. All properties are subject to prior sale, change or withdrawal.



Call Affinity Real Estate

218-237-3333

info@affinityrealestate.com



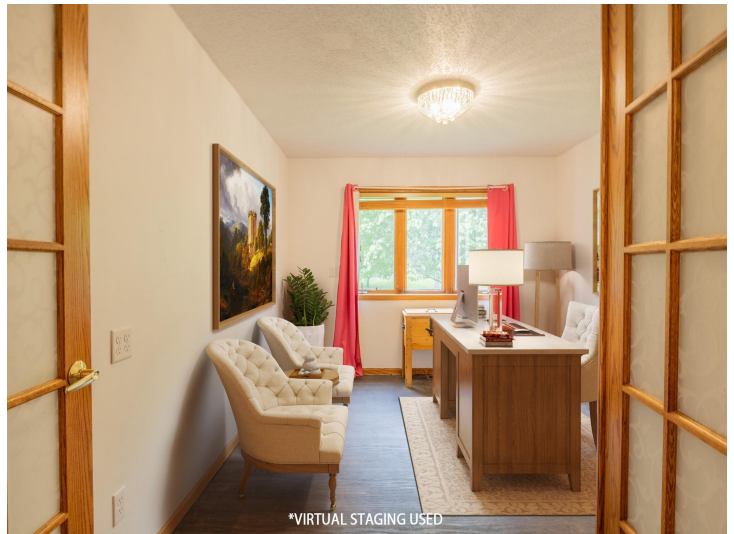
Affinity Real Estate - 600 Park Avenue South - Park Rapids MN 56470



website: www.AffinityRealEstate.com | email: info@affinityrealestate.com | office: 218-237-3333 | fax: 218-237-3377

Affinity
REAL ESTATE INC

\$439,800
MLS 654543 Residential
201 Little Field Court
Bemidji MN 56601



website: www.AffinityRealEstate.com | email: info@affinityrealestate.com | office: 218-237-3333 | fax: 218-237-3377



\$439,800
MLS 6545453 Residential
201 Little Field Court
Bemidji MN 56601



website: www.AffinityRealEstate.com | email: info@affinityrealestate.com | office: 218-237-3333 | fax: 218-237-3377

Affinity
REAL ESTATE INC

\$439,800
MLS 6545453 Residential
201 Little Field Court
Bemidji MN 56601



website: www.AffinityRealEstate.com | email: info@affinityrealestate.com | office: 218-237-3333 | fax: 218-237-3377



\$439,800
 MLS 6545453 Residential
 201 Little Field Court
 Bemidji MN 56601



website: www.AffinityRealEstate.com | email: info@affinityrealestate.com | office: 218-237-3333 | fax: 218-237-3377

Affinity
REAL ESTATE INC

\$439,800
MLS 6545453 Residential
201 Little Field Court
Bemidji MN 56601



website: www.AffinityRealEstate.com | email: info@affinityrealestate.com | office: 218-237-3333 | fax: 218-237-3377



\$439,800
 MLS 6545453 Residential
 201 Little Field Court
 Bemidji MN 56601



*VIRTUAL STAGING USED



*VIRTUAL STAGING USED



*VIRTUAL STAGING USED



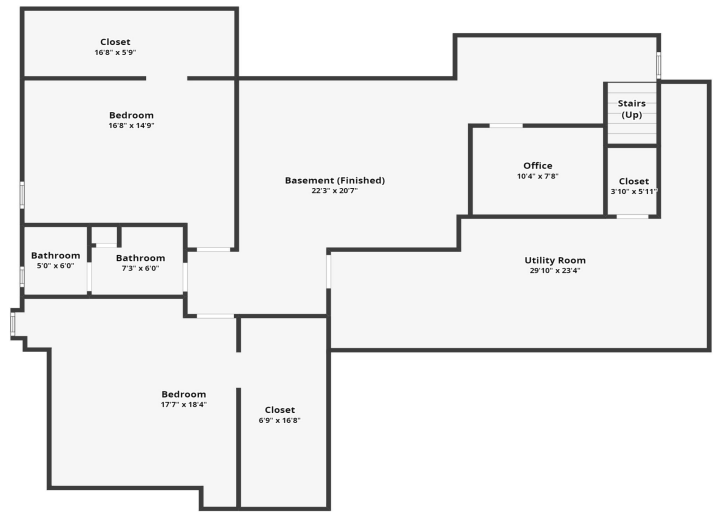
website: www.AffinityRealEstate.com | email: info@affinityrealestate.com | office: 218-237-3333 | fax: 218-237-3377

Affinity
REAL ESTATE INC

\$439,800
MLS 6545453 Residential
201 Little Field Court
Bemidji MN 56601



All dimensions are approximate and subject to independent verification.



All dimensions are approximate and subject to independent verification.



website: www.AffinityRealEstate.com | email: info@affinityrealestate.com | office: 218-237-3333 | fax: 218-237-3377



\$439,800
 MLS 6545453 Residential
 201 Little Field Court
 Bemidji MN 56601



website: www.AffinityRealEstate.com | email: info@affinityrealestate.com | office: 218-237-3333 | fax: 218-237-3377



\$439,800
 MLS 6545453 Residential
 201 Little Field Court
 Bemidji MN 56601