



MLS 6546411 Lake Land

**\$149,900**

**Description:**

Here is your chance to have approximately 400ft of lake shore on Blackwater lake. The high ground has a nice building site which backs up to 43 acres of county land with lots of deer traffic. Great for a cabin, trailer or building a new home.

**Additional Details:**

Lot Acres	15
Lot Dimensions	Irregular lot
School District	118
Taxes	\$816
Taxes with Assessments	\$816
Tax Year	2023

**Additional Features:**

**Driving Directions:**

From Longville south on 84 approximate/y 7 miles, right on County 11, go 1 mile take a left on 4th Ave NW, follow until you see signs on your right and left.



Listed By:  
Tim Cornelius Realty LLC

Affinity Real Estate Inc. participates in the Regional Multiple Listing Service of Minnesota, Inc Broker Reciprocity (sm) program, allowing us to display other broker's listings on our website. All properties are subject to prior sale, change or withdrawal.



**Call Affinity Real Estate**

**218-237-3333**

**info@affinityrealestate.com**



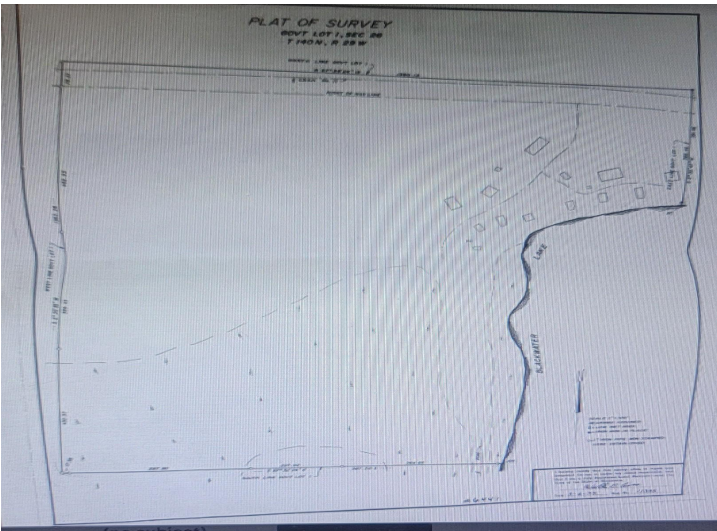
**Affinity Real Estate - 600 Park Avenue South - Park Rapids MN 56470**



website: [www.AffinityRealEstate.com](http://www.AffinityRealEstate.com) | email: [info@affinityrealestate.com](mailto:info@affinityrealestate.com) | office: 218-237-3333 | fax:218-237-3377



**\$149,900**  
MLS 6546411 Lake Land  
3157 4th Avenue  
Longville MN 56655



website: [www.AffinityRealEstate.com](http://www.AffinityRealEstate.com) | email: [info@affinityrealestate.com](mailto:info@affinityrealestate.com) | office: 218-237-3333 | fax:218-237-3377



**\$149,900**  
MLS 6546411 Lake Land  
3157 4th Avenue  
Longville MN 56655