



MLS 6546515 Residential

**\$239,500**

1,512 sq ft  
3 bedrooms  
2 baths

43717 County Highway 26  
Detroit Lakes MN 56501

Status: Pending

**Description:**

Rare find! Are you dreaming of owning 40 acres of property out in the country that includes beautiful hardwood and evergreen trees, wooded trails and a variety of wildlife! Property borders' state and county land. Includes well kept mobile home on concrete slab, sheds and storage shed trailers.

**Additional Details:**

|                        |         |
|------------------------|---------|
| Year Built             | 1991    |
| Lot Acres              | 40      |
| Lot Dimensions         | 1742400 |
| School District        | 23      |
| Taxes                  | \$928   |
| Taxes with Assessments | \$928   |
| Tax Year               | 2023    |

**Additional Features:**

**Basement:** None **Fuel:** Propane **Heat:** Forced Air **Sewer:** Septic System Compliant - Yes, Tank with Drainage Field **Water:** Submersible - 4 Inch  
**Air Conditioning:** None

**Driving Directions:**

use GPS



Listed By:  
Coldwell Banker Element Realty

Affinity Real Estate Inc. participates in the Regional Multiple Listing Service of Minnesota, Inc Broker Reciprocity (sm) program, allowing us to display other broker's listings on our website. All properties are subject to prior sale, change or withdrawal.



Call Affinity Real Estate

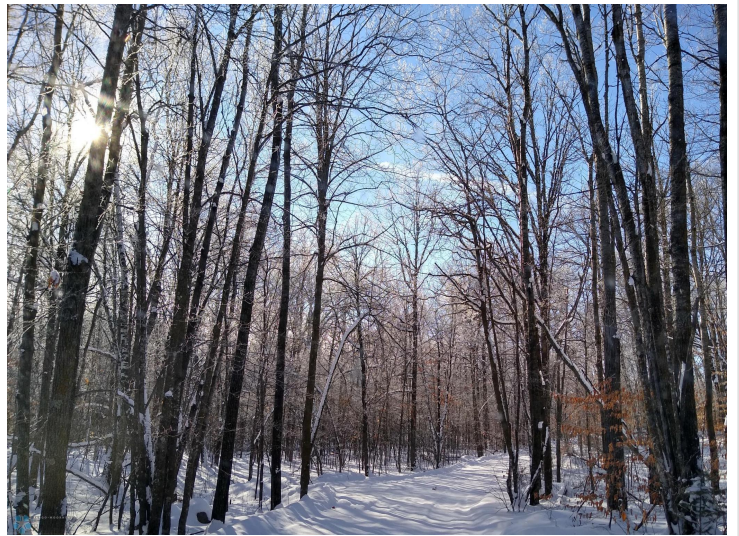
**218-237-3333**

[info@affinityrealestate.com](mailto:info@affinityrealestate.com)



Affinity Real Estate - 600 Park Avenue South - Park Rapids MN 56470





website: [www.AffinityRealEstate.com](http://www.AffinityRealEstate.com) | email: [info@affinityrealestate.com](mailto:info@affinityrealestate.com) | office: 218-237-3333 | fax:218-237-3377



**\$239,500**  
MLS 6546515 Residential  
43717 County Highway 26  
Detroit Lakes MN 56501



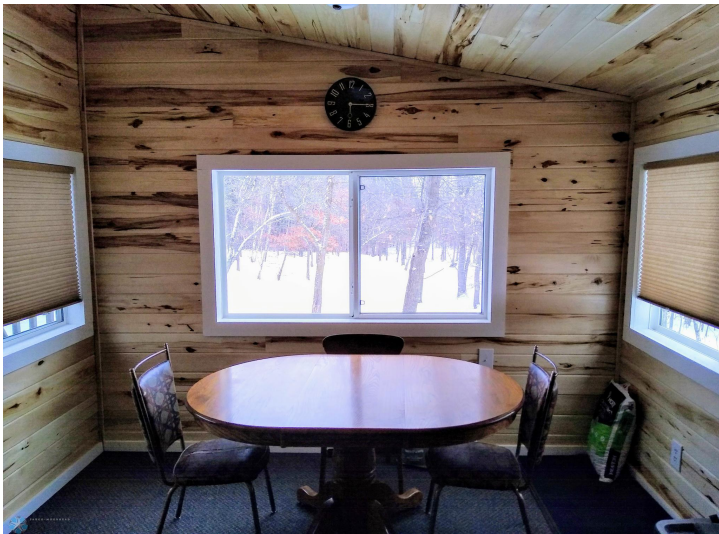


website: [www.AffinityRealEstate.com](http://www.AffinityRealEstate.com) | email: [info@affinityrealestate.com](mailto:info@affinityrealestate.com) | office: 218-237-3333 | fax:218-237-3377



**\$239,500**  
MLS 6546515 Residential  
43717 County Highway 26  
Detroit Lakes MN 56501





website: [www.AffinityRealEstate.com](http://www.AffinityRealEstate.com) | email: [info@affinityrealestate.com](mailto:info@affinityrealestate.com) | office: 218-237-3333 | fax:218-237-3377

**Affinity**  
REAL ESTATE INC

**\$239,500**  
MLS 6546515 Residential  
43717 County Highway 26  
Detroit Lakes MN 56501





website: [www.AffinityRealEstate.com](http://www.AffinityRealEstate.com) | email: [info@affinityrealestate.com](mailto:info@affinityrealestate.com) | office: 218-237-3333 | fax:218-237-3377



**\$239,500**  
MLS 6546515 Residential  
43717 County Highway 26  
Detroit Lakes MN 56501