



MLS 6547080 Residential

**\$174,900**

1,408 sq ft  
3 bedrooms  
2 baths

1223 Park Avenue  
Bemidji MN 56601

Status: Pending

**Description:**

Wonderful home! 3 bedroom, 2 bath home, great location! Brand new, professionally installed, chain fence in the back yard and a metal roof. This home is a must see!

**Additional Details:**

Year Built	1947
Lot Acres	0.34
Lot Dimensions	60x185
Garage Stalls	2
School District	31
Taxes	\$2,184
Taxes with Assessments	\$2,184
Tax Year	2024

**Additional Features:**

**Basement:** Block **Fuel:** Natural Gas **Garage:** 2 **Heat:** Forced Air **Sewer:** City Sewer/Connected **Water:** City Water/Connected **Air Conditioning:** Central Air

**Driving Directions:**

15th St to Park Ave to house number 1223



Listed By:  
Better Homes and Gardens Real Estate First Cho

Affinity Real Estate Inc. participates in the Regional Multiple Listing Service of Minnesota, Inc Broker Reciprocity (sm) program, allowing us to display other broker's listings on our website. All properties are subject to prior sale, change or withdrawal.



Call Affinity Real Estate

**218-237-3333**

[info@affinityrealestate.com](mailto:info@affinityrealestate.com)



Affinity Real Estate - 600 Park Avenue South - Park Rapids MN 56470



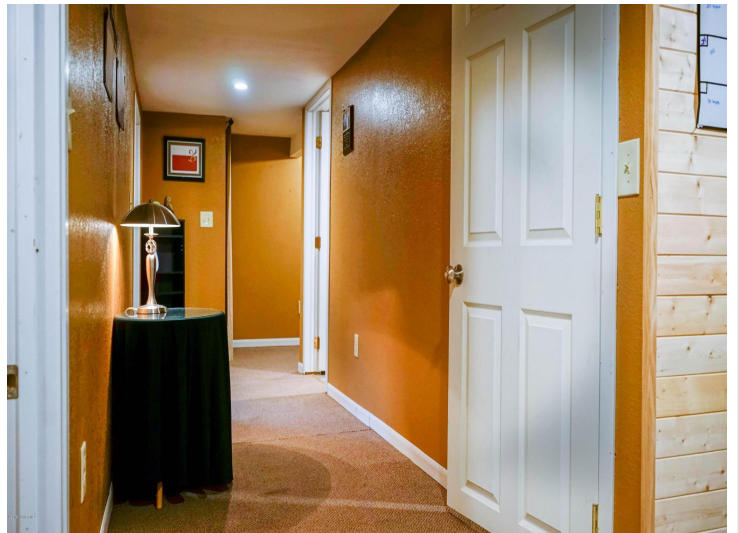
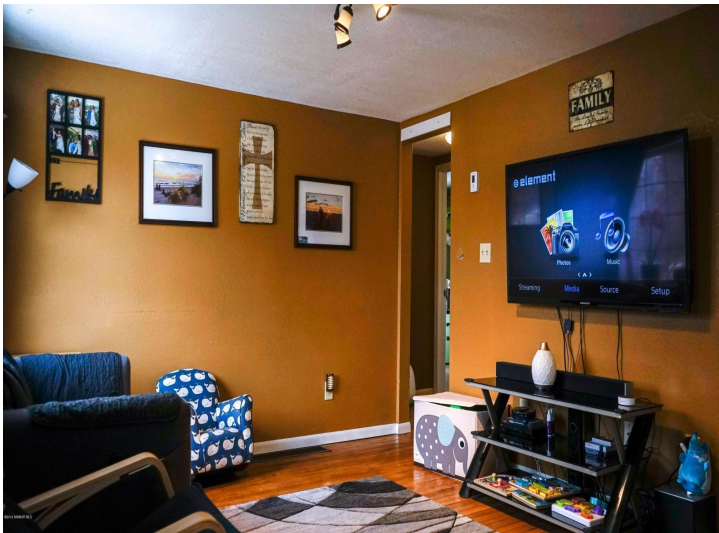


website: [www.AffinityRealEstate.com](http://www.AffinityRealEstate.com) | email: [info@affinityrealestate.com](mailto:info@affinityrealestate.com) | office: 218-237-3333 | fax:218-237-3377



**\$174,900**  
MLS 6547080 Residential  
1223 Park Avenue  
Bemidji MN 56601





website: [www.AffinityRealEstate.com](http://www.AffinityRealEstate.com) | email: [info@affinityrealestate.com](mailto:info@affinityrealestate.com) | office: 218-237-3333 | fax:218-237-3377

**Affinity**  
REAL ESTATE INC

**\$174,900**  
MLS 6547080 Residential  
1223 Park Avenue  
Bemidji MN 56601





website: [www.AffinityRealEstate.com](http://www.AffinityRealEstate.com) | email: [info@affinityrealestate.com](mailto:info@affinityrealestate.com) | office: 218-237-3333 | fax:218-237-3377

**Affinity**  
REAL ESTATE INC

**\$174,900**  
MLS 6547080 Residential  
1223 Park Avenue  
Bemidji MN 56601