



MLS 6548867 Land

**\$29,500**

2.77 Acres  
Subdivided

L5 B1 Castlewood Court  
Breezy Point MN 56472

Status: Active

**Description:**

Studded with mature trees on almost 3-acres, this beautifully wooded slightly rolling lot is located on a cul-de-sac in the heart of Breezy Point in the Castlewood Estates and is centrally located in the Brainerd Lakes area. Build your up-north home and have access to all the amenities including amazing restaurants, various shops, award-winning golf courses, and all the lakes – Whitefish Chain, Pelican Lake, and Lake Ossawinnamakee and more! Location! Location! Location!

**Additional Details:**

Lot Acres	2.77
Lot Dimensions	132x356x552x562
School District	186
Taxes	\$232
Taxes with Assessments	\$232
Tax Year	2024

**Additional Features:**

**Driving Directions:**

County Road 11 to Buschmann Rd to Castlewood. End of the cul de sac on the left.



Listed By:  
Coldwell Banker Realty

Affinity Real Estate Inc. participates in the Regional Multiple Listing Service of Minnesota, Inc Broker Reciprocity (sm) program, allowing us to display other broker's listings on our website. All properties are subject to prior sale, change or withdrawal.



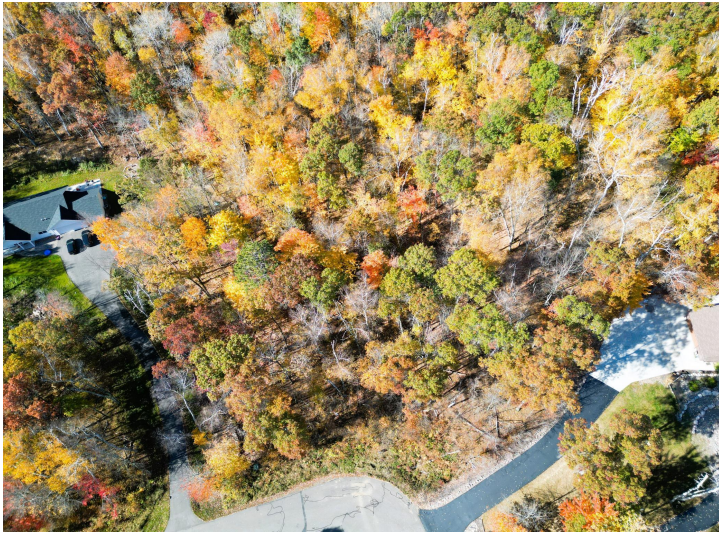
**Call Affinity Real Estate**

**218-237-3333**

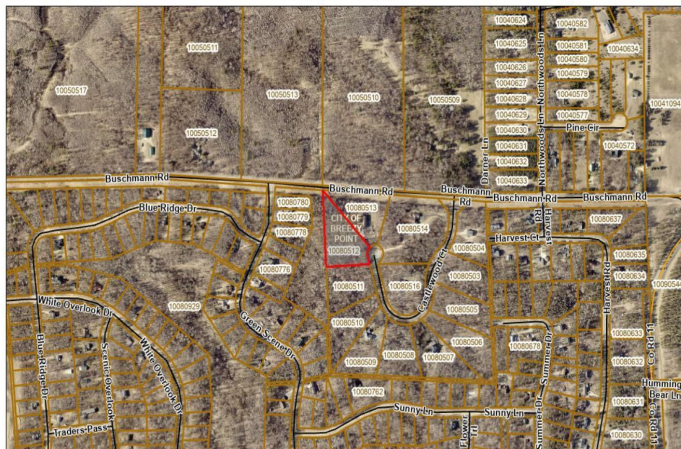
**info@affinityrealestate.com**



**Affinity Real Estate - 600 Park Avenue South - Park Rapids MN 56470**



10080512 , MN



June 8, 2024



website: [www.AffinityRealEstate.com](http://www.AffinityRealEstate.com) | email: [info@affinityrealestate.com](mailto:info@affinityrealestate.com) | office: 218-237-3333 | fax: 218-237-3377



**\$29,500**  
MLS 6548867 Land  
L5 B1 Castlewood Court  
Breezy Point MN 56472



website: [www.AffinityRealEstate.com](http://www.AffinityRealEstate.com) | email: [info@affinityrealestate.com](mailto:info@affinityrealestate.com) | office: 218-237-3333 | fax:218-237-3377



**\$29,500**  
MLS 6548867 Land  
L5 B1 Castlewood Court  
Breezy Point MN 56472



website: [www.AffinityRealEstate.com](http://www.AffinityRealEstate.com) | email: [info@affinityrealestate.com](mailto:info@affinityrealestate.com) | office: 218-237-3333 | fax:218-237-3377

**Affinity**  
REAL ESTATE INC

**\$29,500**  
MLS 6548867 Land  
L5 B1 Castlewood Court  
Breezy Point MN 56472



website: [www.AffinityRealEstate.com](http://www.AffinityRealEstate.com) | email: [info@affinityrealestate.com](mailto:info@affinityrealestate.com) | office: 218-237-3333 | fax:218-237-3377



**\$29,500**  
MLS 6548867 Land  
L5 B1 Castlewood Court  
Breezy Point MN 56472