



MLS 6548977 Land

\$45,000

2.52 Acres
Site Plan Approved

XXX County Rd 145
Pequot Lakes MN 56472

Status: Active

Description:

This 2.52 acre lot is perfectly located in the heart of the Lakes Area just minutes from the public access to the Whitefish Chain! Sitting on a paved road with access to natural gas, electricity, 2 options for high speed internet, this lot has everything you need. The survey is complete, septic sites evaluated, just bring your building plans! Additional lots available

Additional Details:

Lot Acres	2.52
Lot Dimensions	248x493x245x404
School District	186
Taxes	\$50
Taxes with Assessments	\$50
Tax Year	2023

Additional Features:

Driving Directions:

From State Hwy 371 in Jenkins, head east on Veterans Street, then left on Cty Rd 145 for about 1/4 mile to sign on left



Listed By:
North Pointe Realty Advantage

Affinity Real Estate Inc. participates in the Regional Multiple Listing Service of Minnesota, Inc Broker Reciprocity (sm) program, allowing us to display other broker's listings on our website. All properties are subject to prior sale, change or withdrawal.



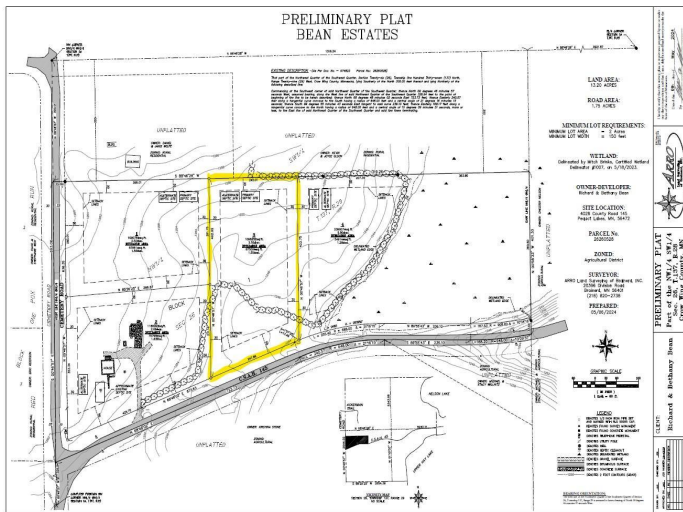
Call Affinity Real Estate

218-237-3333

info@affinityrealestate.com



Affinity Real Estate - 600 Park Avenue South - Park Rapids MN 56470



website: www.AffinityRealEstate.com | email: info@affinityrealestate.com | office: 218-237-3333 | fax:218-237-3377



\$45,000
 MLS 6548977 Land
 XXX County Rd 145
 Pequot Lakes MN 56472



website: www.AffinityRealEstate.com | email: info@affinityrealestate.com | office: 218-237-3333 | fax:218-237-3377



\$45,000
MLS 6548977 Land
XXX County Rd 145
Pequot Lakes MN 56472