



MLS 6548984 Land

**\$60,000**

5.5 Acres  
Site Plan Approved

TBD County Rd 145  
Pequot Lakes MN 56472

Status: Active

**Description:**

This 5.5 acre lot is perfectly located in the heart of the Lakes Area just minutes from the public access to the Whitefish Chain! You'll enjoy viewing wildlife and the beautiful scenery offered by the beautiful wetland pond. Sitting on a paved road with access to natural gas, electricity, 2 options for high speed internet, this lot has everything you need. The survey is complete, septic sites evaluated, just bring your building plans! Additional lots available

**Additional Details:**

|                        |                 |
|------------------------|-----------------|
| Lot Acres              | 5.5             |
| Lot Dimensions         | 688x404x642x361 |
| School District        | 186             |
| Taxes                  | \$50            |
| Taxes with Assessments | \$50            |
| Tax Year               | 2023            |

**Additional Features:**

**Driving Directions:**

From State Hwy 371 in Jenkins, head east on Veterans Street, then left on Cty Rd 145 for about 1/4 mile to sign on left



Listed By:  
North Pointe Realty Advantage

Affinity Real Estate Inc. participates in the Regional Multiple Listing Service of Minnesota, Inc Broker Reciprocity (sm) program, allowing us to display other broker's listings on our website. All properties are subject to prior sale, change or withdrawal.



Call Affinity Real Estate

**218-237-3333**

[info@affinityrealestate.com](mailto:info@affinityrealestate.com)



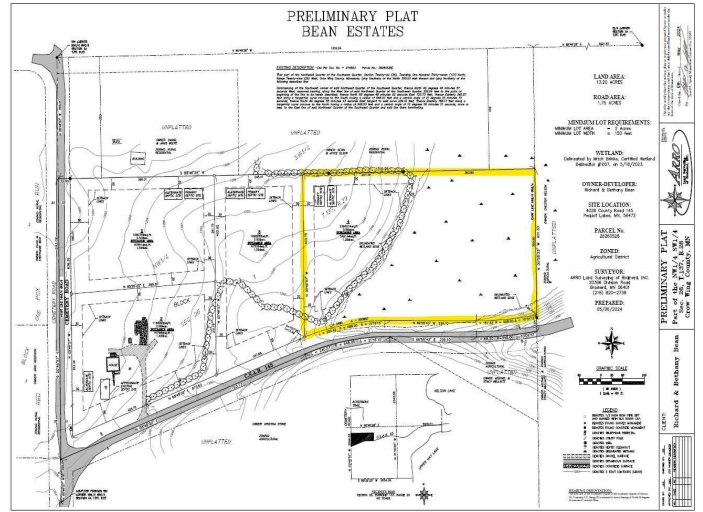
Affinity Real Estate - 600 Park Avenue South - Park Rapids MN 56470



website: [www.AffinityRealEstate.com](http://www.AffinityRealEstate.com) | email: [info@affinityrealestate.com](mailto:info@affinityrealestate.com) | office: 218-237-3333 | fax:218-237-3377



**\$60,000**  
MLS 6548984 Land  
TBD County Rd 145  
Pequot Lakes MN 56472



website: [www.AffinityRealEstate.com](http://www.AffinityRealEstate.com) | email: [info@affinityrealestate.com](mailto:info@affinityrealestate.com) | office: 218-237-3333 | fax:218-237-3377



**\$60,000**  
 MLS 6548984 Land  
 TBD County Rd 145  
 Pequot Lakes MN 56472