



MLS 6549404 Lake Home

\$495,000

2,368 sq ft
4 bedrooms
2 baths

864 County 46
Backus MN 56435

Waterfront: Island Lake (11025700)

Status: Pending

Description:

Island Lake-A classic 4BR/2BA storybook cottage sits on the south shore of this noted fishing lake. The home is tastefully appointed with knotty pine accents. Pine flooring adds warmth coupled with 2 fireplaces to take off the chill. A whimsical garden of perennials blankets the grounds with gradual elevation to the water's edge and 150' of solid frontage. A potting shed, fire pit, gazebo and greenhouse grace the property along with a covered outdoor kitchen with a gas grill. Enjoy the full wrap around porch for those morning coffee interludes overlooking Ponto Lake to the south. A 936 SF metal garage provides adequate storage for vehicles and lake toys.

Additional Details:

Year Built	1990
Lot Acres	1.07
Lot Dimensions	150x316x150x299
Garage Stalls	3
School District	2174
Taxes	\$2,046
Taxes with Assessments	\$2,112
Tax Year	2024

Additional Features:

Basement: Partial, Unfinished **Fuel:** Propane, Wood **Garage:** 3 **Heat:** Forced Air, Fireplace(s), Wood Stove **Sewer:** Private Sewer, Tank with Drainage Field **Water:** Sand Point **Air Conditioning:** Central Air

Driving Directions:

15 Miles NE of Pine River on #84 to C.R. #46 then west 1/4 mile to #864 on right.



Listed By:
Heartland Real Estate

Affinity Real Estate Inc. participates in the Regional Multiple Listing Service of Minnesota, Inc Broker Reciprocity (sm) program, allowing us to display other broker's listings on our website. All properties are subject to prior sale, change or withdrawal.



Call Affinity Real Estate

218-237-3333

info@affinityrealestate.com



Affinity Real Estate - 600 Park Avenue South - Park Rapids MN 56470



website: www.AffinityRealEstate.com | email: info@affinityrealestate.com | office: 218-237-3333 | fax: 218-237-3377

Affinity
REAL ESTATE INC

\$495,000
MLS 6549404 Lake Home
864 County 46
Backus MN 56435



website: www.AffinityRealEstate.com | email: info@affinityrealestate.com | office: 218-237-3333 | fax:218-237-3377

Affinity
REAL ESTATE INC

\$495,000
MLS 6549404 Lake Home
864 County 46
Backus MN 56435



website: www.AffinityRealEstate.com | email: info@affinityrealestate.com | office: 218-237-3333 | fax: 218-237-3377

Affinity
REAL ESTATE INC

\$495,000
MLS 6549404 Lake Home
864 County 46
Backus MN 56435



website: www.AffinityRealEstate.com | email: info@affinityrealestate.com | office: 218-237-3333 | fax: 218-237-3377

Affinity
REAL ESTATE INC

\$495,000
MLS 6549404 Lake Home
864 County 46
Backus MN 56435



website: www.AffinityRealEstate.com | email: info@affinityrealestate.com | office: 218-237-3333 | fax:218-237-3377

Affinity
REAL ESTATE INC

\$495,000
MLS 6549404 Lake Home
864 County 46
Backus MN 56435



website: www.AffinityRealEstate.com | email: info@affinityrealestate.com | office: 218-237-3333 | fax: 218-237-3377

Affinity
REAL ESTATE INC

\$495,000
MLS 6549404 Lake Home
864 County 46
Backus MN 56435



website: www.AffinityRealEstate.com | email: info@affinityrealestate.com | office: 218-237-3333 | fax:218-237-3377

Affinity
REAL ESTATE INC

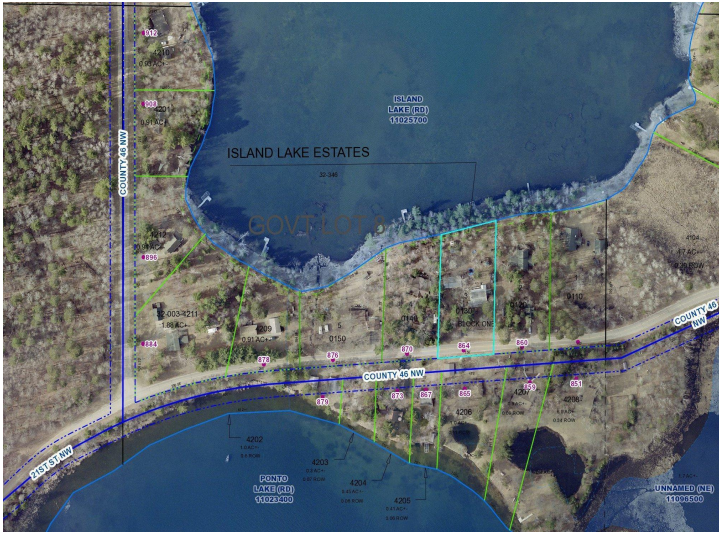
\$495,000
MLS 6549404 Lake Home
864 County 46
Backus MN 56435



website: www.AffinityRealEstate.com | email: info@affinityrealestate.com | office: 218-237-3333 | fax:218-237-3377



\$495,000
MLS 6549404 Lake Home
864 County 46
Backus MN 56435



website: www.AffinityRealEstate.com | email: info@affinityrealestate.com | office: 218-237-3333 | fax:218-237-3377



\$495,000
MLS 6549404 Lake Home
864 County 46
Backus MN 56435