



MLS 6549653 Residential

\$224,900

1,200 sq ft
1 bedrooms
2 baths

13217 Beaver Road
Bemidji MN 56601

Status: Active

Description:

Welcome to Big-Country Minnesota, where the opportunity is great, and the forest is even greater! Explore a topographically diverse acreage with trails and clearings, wildlife galore and majestic lakes and northwoods in every direction. Quiet gravel roads, rivers, fence lines, fresh air and towering trees for miles. Come explore what Northern Minnesota has to offer on this epic property for sale. A 16-by-80-foot trailer serves as a year-round home, along with its great pole building counterpart with enough room for several boats and vehicles. Throw a dart at the map and pick any of hundreds of nearby lakes for a summer day of enjoyment. Then retreat to this compound in the woods shared with all manner of Minnesota wildlife. What's more, this property abuts thousands of acres of Minnesota public forest lands. Have at it!

Additional Details:

Year Built	1990
Lot Acres	20
Lot Dimensions	662x1339x655x1337
Garage Stalls	2
School District	31
Taxes	\$582
Taxes with Assessments	\$768
Tax Year	2025

Additional Features:

Fuel: Wood **Heat:** Forced Air, Fireplace(s)

Driving Directions:

From Bemidji take Roosevelt Road SE, Turn Left onto Great River Road/Swenson Rd SE, Right onto Power Dam Rd NE, Left onto Otter Rd NE, at the curve road turns into Beaver Rd NE, Property on left. Fire #13217



Listed By:
Your Home Sold Guaranteed Realty Exclusive

Affinity Real Estate Inc. participates in the Regional Multiple Listing Service of Minnesota, Inc Broker Reciprocity (sm) program, allowing us to display other broker's listings on our website. All properties are subject to prior sale, change or withdrawal.



Call Affinity Real Estate

218-237-3333

info@affinityrealestate.com



Affinity Real Estate - 600 Park Avenue South - Park Rapids MN 56470



website: www.AffinityRealEstate.com | email: info@affinityrealestate.com | office: 218-237-3333 | fax: 218-237-3377



\$224,900
 MLS 6549653 Residential
 13217 Beaver Road
 Bemidji MN 56601



website: www.AffinityRealEstate.com | email: info@affinityrealestate.com | office: 218-237-3333 | fax: 218-237-3377

Affinity
REAL ESTATE INC

\$224,900
MLS 6549653 Residential
13217 Beaver Road
Bemidji MN 56601



website: www.AffinityRealEstate.com | email: info@affinityrealestate.com | office: 218-237-3333 | fax: 218-237-3377

Affinity
REAL ESTATE INC

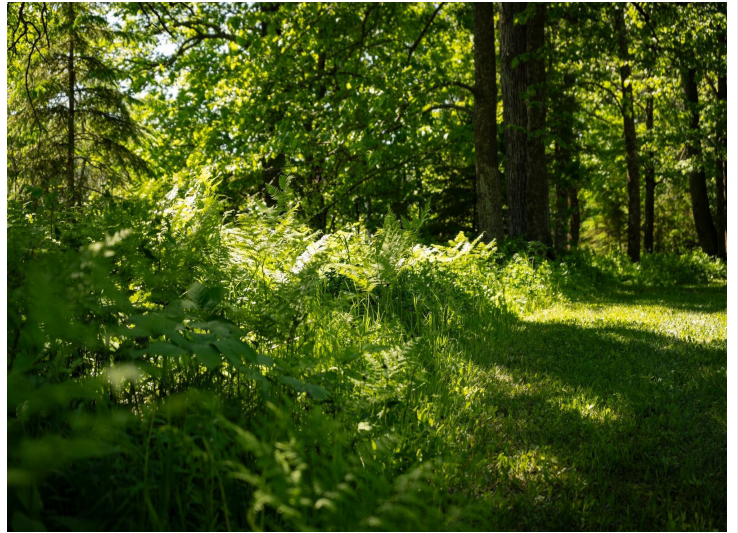
\$224,900
MLS 6549653 Residential
13217 Beaver Road
Bemidji MN 56601



website: www.AffinityRealEstate.com | email: info@affinityrealestate.com | office: 218-237-3333 | fax: 218-237-3377



\$224,900
MLS 6549653 Residential
13217 Beaver Road
Bemidji MN 56601



website: www.AffinityRealEstate.com | email: info@affinityrealestate.com | office: 218-237-3333 | fax: 218-237-3377



\$224,900
 MLS 6549653 Residential
 13217 Beaver Road
 Bemidji MN 56601



website: www.AffinityRealEstate.com | email: info@affinityrealestate.com | office: 218-237-3333 | fax: 218-237-3377



\$224,900
 MLS 6549653 Residential
 13217 Beaver Road
 Bemidji MN 56601



website: www.AffinityRealEstate.com | email: info@affinityrealestate.com | office: 218-237-3333 | fax:218-237-3377



\$224,900
MLS 6549653 Residential
13217 Beaver Road
Bemidji MN 56601