



MLS 6550204 Commercial Sale

\$199,000

Description:

Business or spiritual opportunity with a great location in the center of Park Rapids. Year-round building with city utilities, stained glass windows, multiple offices, 4 bathrooms and it is handicap accessible. You will love all the gathering spaces, and kitchen with refrigerator, stove and dishwasher and tons of cabinets. There is a full unfinished basement with opportunity for growth. Beautiful building waiting for your vision.

Additional Details:

Year Built	1940
Lot Acres	0.24
Lot Dimensions	50 x 140
School District	309
Taxes	\$263
Taxes with Assessments	\$263
Tax Year	2024

Additional Features:

Basement: Block, Full, Partially Finished, Storage Space **Fuel:** Electric, Natural Gas **Heat:** Forced Air **Sewer:** City Sewer/Connected **Water:** City Water/Connected **Air Conditioning:** Central Air, Zoned

Driving Directions:

From 34/71 go West to Court Ave turn left to the corner of 3rd Street & Court where building/church is located.



Listed By:
Affinity Real Estate Inc.

Affinity Real Estate Inc. participates in the Regional Multiple Listing Service of Minnesota, Inc Broker Reciprocity (sm) program, allowing us to display other broker's listings on our website. All properties are subject to prior sale, change or withdrawal.



Call Affinity Real Estate

218-237-3333

info@affinityrealestate.com



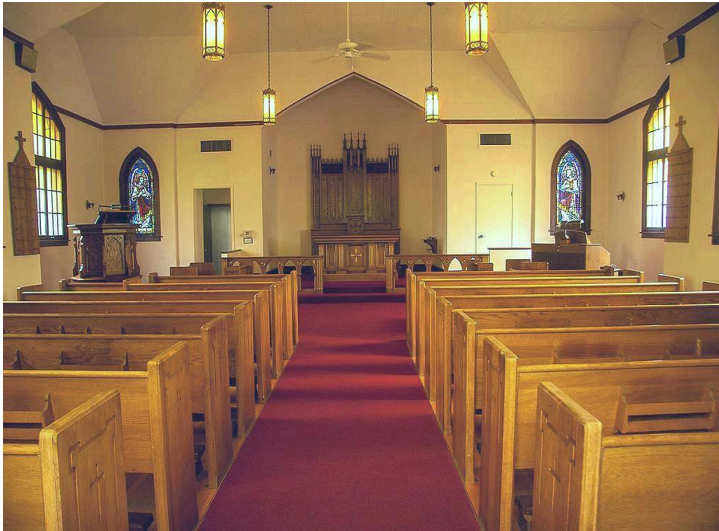
Affinity Real Estate - 600 Park Avenue South - Park Rapids MN 56470



website: www.AffinityRealEstate.com | email: info@affinityrealestate.com | office: 218-237-3333 | fax: 218-237-3377

Affinity
REAL ESTATE INC

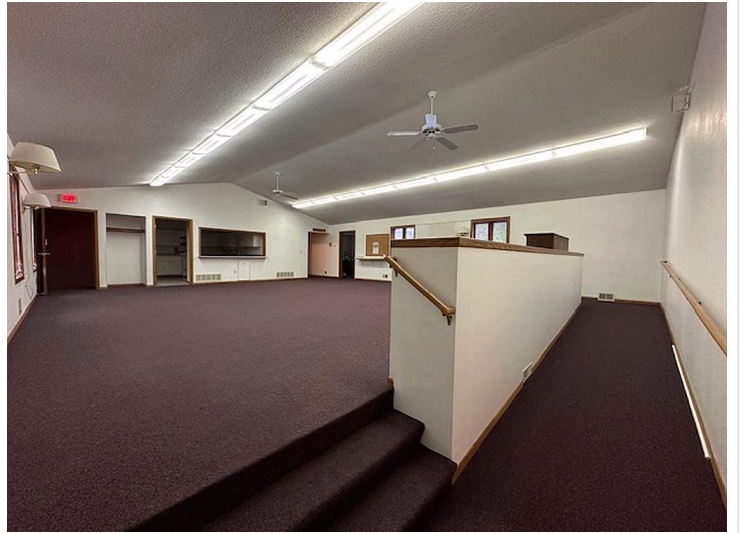
\$199,000
MLS 6550204 Commercial
Sale
212 Court Avenue
Park Rapids MN 56470



website: www.AffinityRealEstate.com | email: info@affinityrealestate.com | office: 218-237-3333 | fax: 218-237-3377

Affinity
REAL ESTATE INC

\$199,000
MLS 6550204 Commercial
Sale
212 Court Avenue
Park Rapids MN 56470



website: www.AffinityRealEstate.com | email: info@affinityrealestate.com | office: 218-237-3333 | fax:218-237-3377

Affinity
REAL ESTATE INC

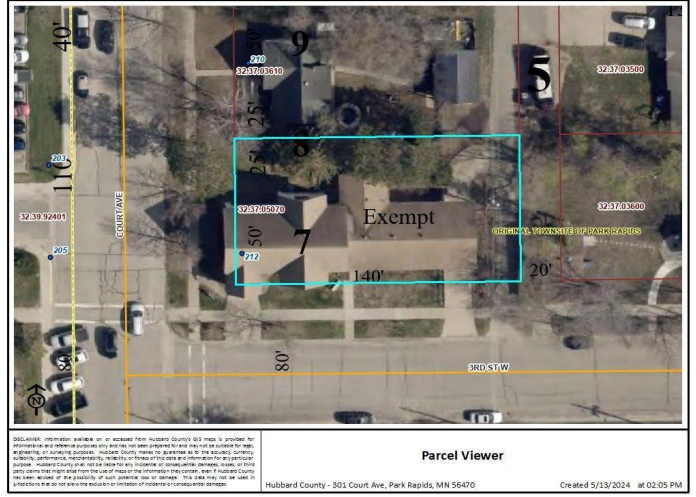
\$199,000
MLS 6550204 Commercial
Sale
212 Court Avenue
Park Rapids MN 56470



website: www.AffinityRealEstate.com | email: info@affinityrealestate.com | office: 218-237-3333 | fax: 218-237-3377



\$199,000
MLS 6550204 Commercial
Sale
212 Court Avenue
Park Rapids MN 56470



website: www.AffinityRealEstate.com | email: info@affinityrealestate.com | office: 218-237-3333 | fax: 218-237-3377



\$199,000
 MLS 6550204 Commercial
 Sale
 212 Court Avenue
 Park Rapids MN 56470