



MLS 6550902 Residential

**\$399,900**

2,208 sq ft  
5 bedrooms  
3 baths

30973 Rasmussen Road  
Pequot Lakes MN 56472

Status: Active

**Description:**

MOVE-IN READY! IMMEDIATE POSSESSION AVAILABLE! Welcome Home to this completely renovated 5 bedroom, 3 bathroom home. NEW high efficiency furnace & air conditioner, NEW stainless steel appliances, NEW gorgeous cabinets and Quartz countertops, NEW light fixtures, flooring, doors, trim, bathroom, vanities, hardware... All NEW! Updated electrical and plumbing! The large primary suite features a private ¾ bathroom and a spacious area for either a home office, sitting/reading room, or exercise! The finished lower level walk-out has 3 additional bedrooms, large family room, full bathroom and separate access, perfect for a mother-in-law suite, daycare, rental income and more. Oversized 3-car gar and fabulous landscaped grounds! This property is zoned mixed use and offers endless possibilities. Conveniently located near several lakes, unique shops, bars and restaurants, championship golf, recreational trails, and health care. The sky is the limit and the location is perfect.

**Additional Details:**


Year Built	1985
Lot Acres	0.31
Lot Dimensions	101x129x144x101
Garage Stalls	3
School District	186
Taxes	(unreported)
Taxes with Assessments	\$25
Tax Year	2024

**Additional Features:**

**Fuel:** Natural Gas **Heat:** Forced Air

**Driving Directions:**

From Hwy 371, take CR 11 West to Rasmussen Rd, go South to corner of Butler St and Rasmussen Rd. You make park in the driveway on Butler, or park on Rasmussen.

 Listed By:  
Edina Realty, Inc.

Affinity Real Estate Inc. participates in the Regional Multiple Listing Service of Minnesota, Inc Broker Reciprocity (sm) program, allowing us to display other broker's listings on our website. All properties are subject to prior sale, change or withdrawal.

 **Call Affinity Real Estate**  
**218-237-3333**  
**info@affinityrealestate.com**

    
Affinity Real Estate - 600 Park Avenue South - Park Rapids MN 56470



website: [www.AffinityRealEstate.com](http://www.AffinityRealEstate.com) | email: [info@affinityrealestate.com](mailto:info@affinityrealestate.com) | office: 218-237-3333 | fax: 218-237-3377

**Affinity**  
REAL ESTATE INC

**\$399,900**  
MLS 6550902 Residential  
30973 Rasmussen Road  
Pequot Lakes MN 56472



website: [www.AffinityRealEstate.com](http://www.AffinityRealEstate.com) | email: [info@affinityrealestate.com](mailto:info@affinityrealestate.com) | office: 218-237-3333 | fax:218-237-3377

**Affinity**  
REAL ESTATE INC

**\$399,900**  
MLS 6550902 Residential  
30973 Rasmussen Road  
Pequot Lakes MN 56472



website: [www.AffinityRealEstate.com](http://www.AffinityRealEstate.com) | email: [info@affinityrealestate.com](mailto:info@affinityrealestate.com) | office: 218-237-3333 | fax:218-237-3377



**\$399,900**  
MLS 6550902 Residential  
30973 Rasmussen Road  
Pequot Lakes MN 56472



website: [www.AffinityRealEstate.com](http://www.AffinityRealEstate.com) | email: [info@affinityrealestate.com](mailto:info@affinityrealestate.com) | office: 218-237-3333 | fax:218-237-3377



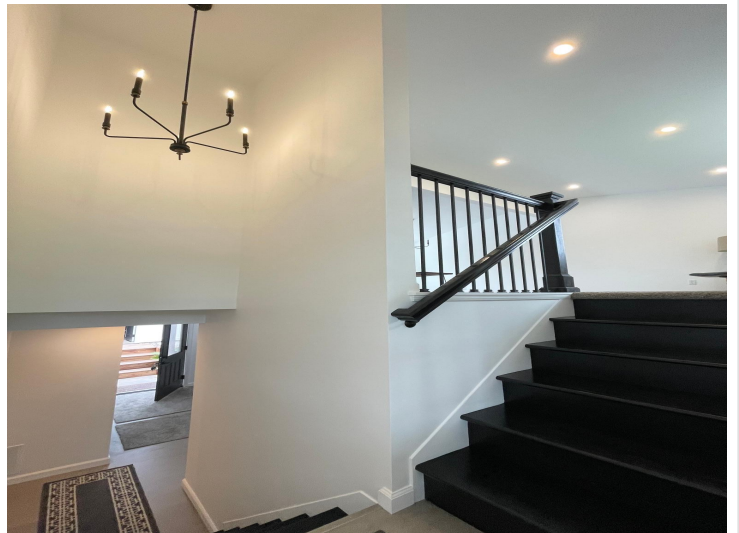
**\$399,900**  
MLS 6550902 Residential  
30973 Rasmussen Road  
Pequot Lakes MN 56472



website: [www.AffinityRealEstate.com](http://www.AffinityRealEstate.com) | email: [info@affinityrealestate.com](mailto:info@affinityrealestate.com) | office: 218-237-3333 | fax:218-237-3377

**Affinity**  
REAL ESTATE INC

**\$399,900**  
MLS 6550902 Residential  
30973 Rasmussen Road  
Pequot Lakes MN 56472



website: [www.AffinityRealEstate.com](http://www.AffinityRealEstate.com) | email: [info@affinityrealestate.com](mailto:info@affinityrealestate.com) | office: 218-237-3333 | fax:218-237-3377

**Affinity**  
REAL ESTATE INC

**\$399,900**  
MLS 6550902 Residential  
30973 Rasmussen Road  
Pequot Lakes MN 56472



website: [www.AffinityRealEstate.com](http://www.AffinityRealEstate.com) | email: [info@affinityrealestate.com](mailto:info@affinityrealestate.com) | office: 218-237-3333 | fax:218-237-3377



**\$399,900**  
MLS 6550902 Residential  
30973 Rasmussen Road  
Pequot Lakes MN 56472

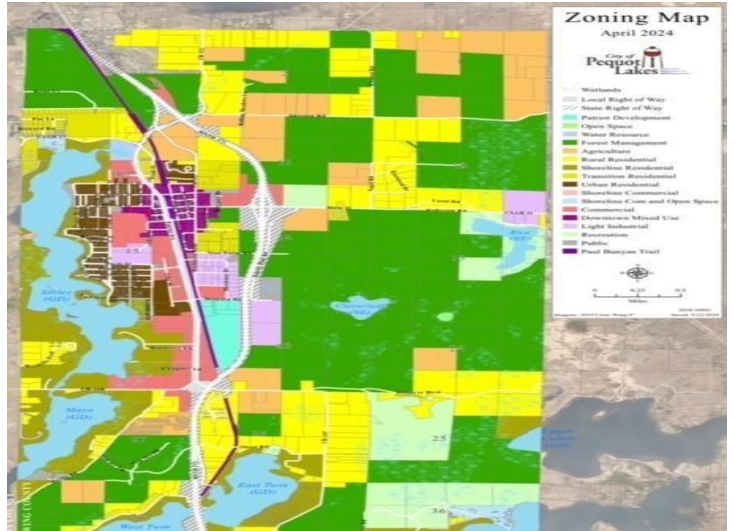




website: [www.AffinityRealEstate.com](http://www.AffinityRealEstate.com) | email: [info@affinityrealestate.com](mailto:info@affinityrealestate.com) | office: 218-237-3333 | fax:218-237-3377

**Affinity**  
REAL ESTATE INC

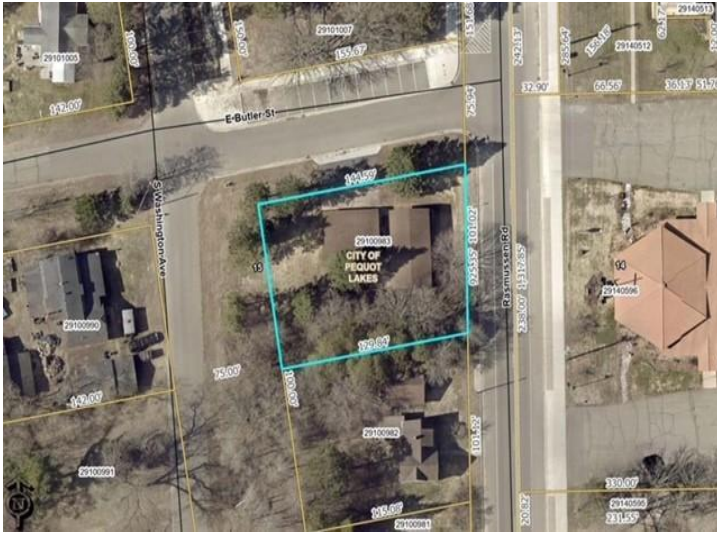
**\$399,900**  
MLS 6550902 Residential  
30973 Rasmussen Road  
Pequot Lakes MN 56472



website: [www.AffinityRealEstate.com](http://www.AffinityRealEstate.com) | email: [info@affinityrealestate.com](mailto:info@affinityrealestate.com) | office: 218-237-3333 | fax: 218-237-3377



**\$399,900**  
MLS 6550902 Residential  
30973 Rasmussen Road  
Pequot Lakes MN 56472



website: [www.AffinityRealEstate.com](http://www.AffinityRealEstate.com) | email: [info@affinityrealestate.com](mailto:info@affinityrealestate.com) | office: 218-237-3333 | fax:218-237-3377



**\$399,900**  
MLS 6550902 Residential  
30973 Rasmussen Road  
Pequot Lakes MN 56472