



MLS 6551518 Lake Home

\$219,900

1,275 sq ft
3 bedrooms
2 baths

23346 Gateway Drive
Akeley MN 56433

Waterfront: Tenth Crow Wing

Status: Active

Description:

Discover your new country home on over 2.5 acres of serene pine-filled surroundings. This charming corner-lot property boasts 3 bedrooms, 2 baths, an attached 2-car garage, a delightful deck with picturesque views, and access to Tenth Crow Wing. With close proximity to the Heartland Trail and Paul Bunyan State Forest, this is an opportunity not to be missed.

Additional Details:

Year Built	2003
Lot Acres	2.57
Lot Dimensions	263x288x268x368
Garage Stalls	2
School District	113
Taxes	\$712
Taxes with Assessments	\$922
Tax Year	2024

Additional Features:

Basement: Crawl Space, Slab **Fuel:** Propane **Garage:** 2 **Heat:** Forced Air **Sewer:** Tank with Drainage Field **Water:** Drilled **Air Conditioning:** Central Air

Driving Directions:

From Nevis County 2/Hwy 34, head east on 34 to a right on Gateway Dr. to property.



Listed By:
Wolff & Simon Real Estate

Affinity Real Estate Inc. participates in the Regional Multiple Listing Service of Minnesota, Inc Broker Reciprocity (sm) program, allowing us to display other broker's listings on our website. All properties are subject to prior sale, change or withdrawal.



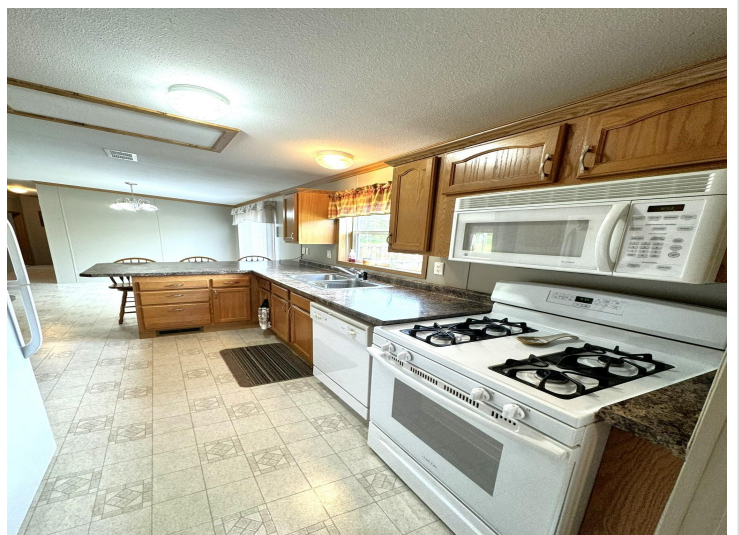
Call Affinity Real Estate

218-237-3333

info@affinityrealestate.com



Affinity Real Estate - 600 Park Avenue South - Park Rapids MN 56470



website: www.AffinityRealEstate.com | email: info@affinityrealestate.com | office: 218-237-3333 | fax:218-237-3377



\$219,900
MLS 6551518 Lake Home
23346 Gateway Drive
Akeley MN 56433



website: www.AffinityRealEstate.com | email: info@affinityrealestate.com | office: 218-237-3333 | fax:218-237-3377

Affinity
REAL ESTATE INC

\$219,900
MLS 6551518 Lake Home
23346 Gateway Drive
Akeley MN 56433



website: www.AffinityRealEstate.com | email: info@affinityrealestate.com | office: 218-237-3333 | fax:218-237-3377

Affinity
REAL ESTATE INC

\$219,900
MLS 6551518 Lake Home
23346 Gateway Drive
Akeley MN 56433



website: www.AffinityRealEstate.com | email: info@affinityrealestate.com | office: 218-237-3333 | fax:218-237-3377



\$219,900
MLS 6551518 Lake Home
23346 Gateway Drive
Akeley MN 56433