

MLS 6552276 Land

\$69,900

1.18 Acres
Raw Land

TBD * County 118
Backus MN 56435

Status: Pending

Description:

Lake Hattie Area – This 30'x60' storage building features a new ridge cap, all new roofing screws and a new class 5 floor. The structure sits on a nicely wooded / acre site. Electric service is available at the township road.

Additional Details:

Lot Acres	1.18
Lot Dimensions	205'x250'
School District	2174
Taxes	\$94
Taxes with Assessments	\$94
Tax Year	2024

Additional Features:

Driving Directions:

9 Miles N. of Pine River on #84 to a left on Normans Crossing Rd NW then left on C.R. #118 for 1 block to property on the left.



Listed By:
Heartland Real Estate

Affinity Real Estate Inc. participates in the Regional Multiple Listing Service of Minnesota, Inc Broker Reciprocity (sm) program, allowing us to display other broker's listings on our website. All properties are subject to prior sale, change or withdrawal.



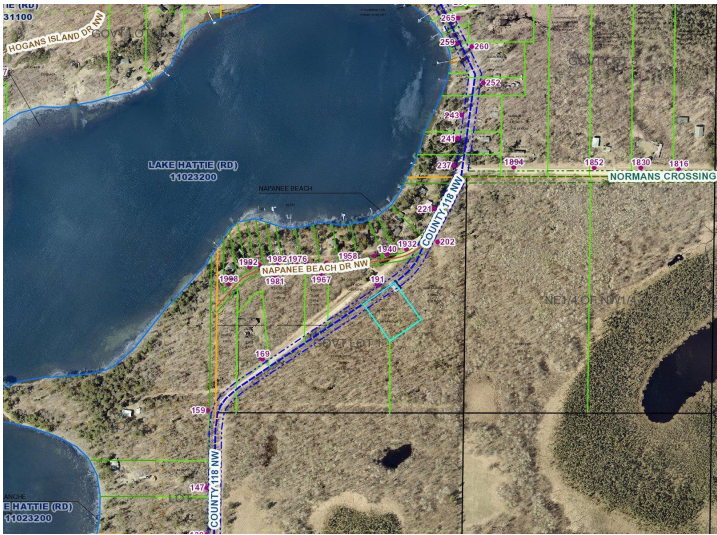
Call Affinity Real Estate

218-237-3333

info@affinityrealestate.com



Affinity Real Estate - 600 Park Avenue South - Park Rapids MN 56470



website: www.AffinityRealEstate.com | email: info@affinityrealestate.com | office: 218-237-3333 | fax:218-237-3377



\$69,900
MLS 6552276 Land
TBD * County 118
Backus MN 56435