



MLS 6552458 Residential

\$399,900

3,803 sq ft
4 bedrooms
4 baths

2710 22nd Street
Pine River MN 56474

Status: Pending

Description:

Welcome Home! Gorgeous home just outside of Pine River. Easy access to 371, Paul Bunyan bike trail, and more. Home features include: updated kitchen countertops and appliances, walk in pantry, main floor primary suite, main floor laundry, updated bathrooms on main and lower level, newly finished oak flooring on main floor, floor to ceiling brick fireplace, spacious family room in lower level with wet bar for entertaining, 4 car garage, and so much more! All of this on a 2 acre corner lot in a quiet neighborhood.

Additional Details:


Year Built	1994
Lot Acres	2
Lot Dimensions	223x315x87x213x345
Garage Stalls	4
School District	2174
Taxes	\$1,962
Taxes with Assessments	\$2,028
Tax Year	2024

Additional Features:

Basement: Block, Daylight/Lookout Windows, Finished, Full, Storage Space, Walkout **Fuel:** Natural Gas **Garage:** 4 **Heat:** Baseboard, Boiler, Hot Water **Sewer:** Private Sewer, Tank with Drainage Field **Water:** Drilled, Private, Well **Air Conditioning:** None

Driving Directions:

In Pine River head North on 371, Left on CR-2, Right on 28th Ave SW, Right on 22nd Street SW, home is on your left.

 Listed By:
RE/MAX Advantage Plus

Affinity Real Estate Inc. participates in the Regional Multiple Listing Service of Minnesota, Inc Broker Reciprocity (sm) program, allowing us to display other broker's listings on our website. All properties are subject to prior sale, change or withdrawal.

 **Call Affinity Real Estate**
218-237-3333
info@affinityrealestate.com

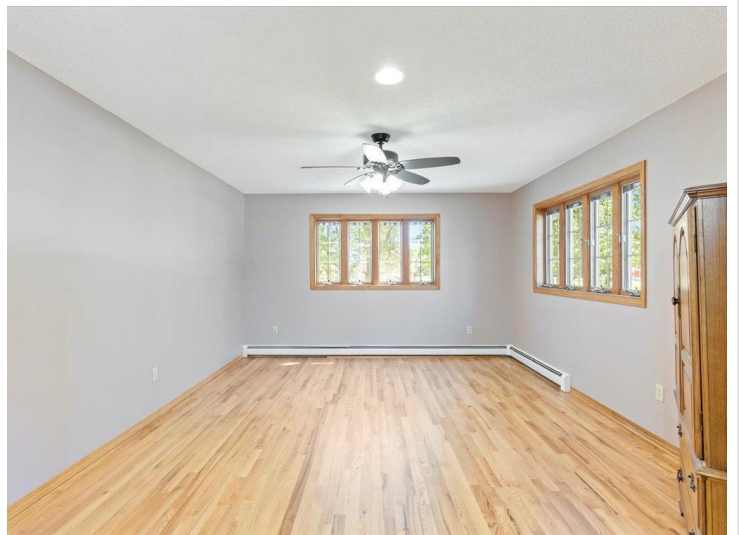
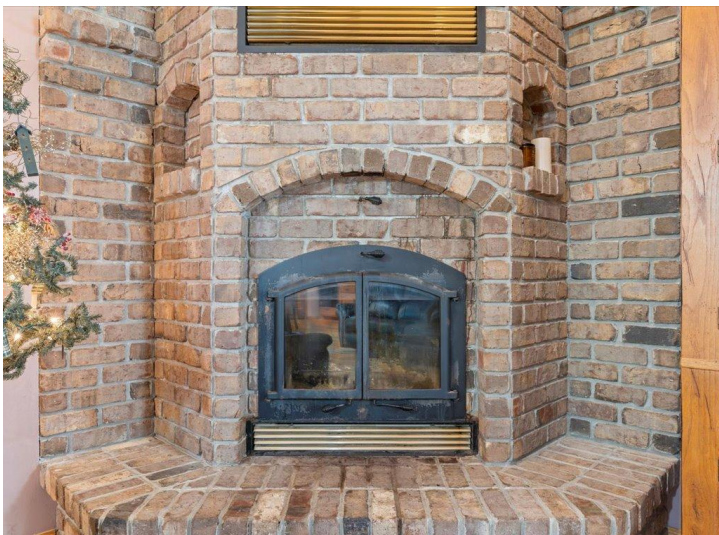
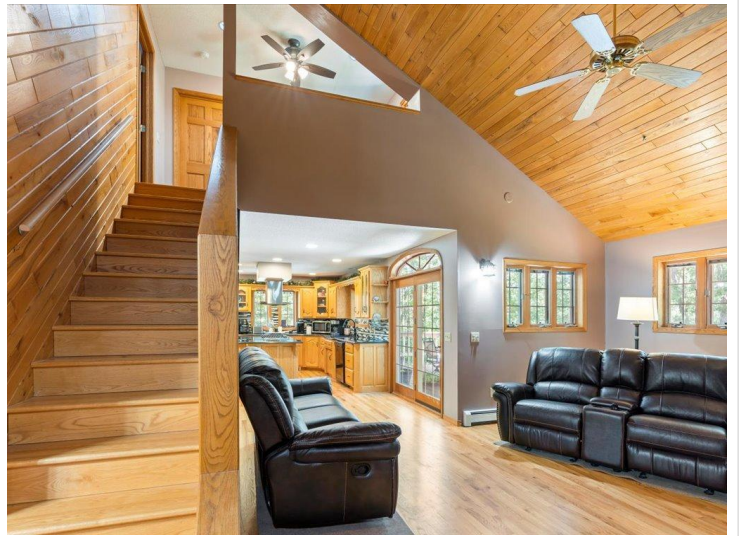
  
Affinity Real Estate - 600 Park Avenue South - Park Rapids MN 56470



website: www.AffinityRealEstate.com | email: info@affinityrealestate.com | office: 218-237-3333 | fax: 218-237-3377

Affinity
REAL ESTATE INC

\$399,900
MLS 6552458 Residential
2710 22nd Street
Pine River MN 56474



website: www.AffinityRealEstate.com | email: info@affinityrealestate.com | office: 218-237-3333 | fax:218-237-3377

Affinity
REAL ESTATE INC

\$399,900
MLS 6552458 Residential
2710 22nd Street
Pine River MN 56474



website: www.AffinityRealEstate.com | email: info@affinityrealestate.com | office: 218-237-3333 | fax:218-237-3377



\$399,900
MLS 6552458 Residential
2710 22nd Street
Pine River MN 56474



website: www.AffinityRealEstate.com | email: info@affinityrealestate.com | office: 218-237-3333 | fax:218-237-3377



\$399,900
MLS 6552458 Residential
2710 22nd Street
Pine River MN 56474



website: www.AffinityRealEstate.com | email: info@affinityrealestate.com | office: 218-237-3333 | fax:218-237-3377



\$399,900
MLS 6552458 Residential
2710 22nd Street
Pine River MN 56474



website: www.AffinityRealEstate.com | email: info@affinityrealestate.com | office: 218-237-3333 | fax: 218-237-3377

Affinity
REAL ESTATE INC

\$399,900
MLS 6552458 Residential
2710 22nd Street
Pine River MN 56474



website: www.AffinityRealEstate.com | email: info@affinityrealestate.com | office: 218-237-3333 | fax:218-237-3377



\$399,900
MLS 6552458 Residential
2710 22nd Street
Pine River MN 56474