



MLS 6552491 Residential

\$380,000

2,886 sq ft
4 bedrooms
3 baths

16201 Co Hwy 15
Audubon MN 56511

Status: Active

Description:

This charming rural home offers a serene retreat on a beautiful 3-acre lot . This 3 bedroom, 3 bathroom home is the perfect blend of comfort and convenience. The heart of the home features a spacious living area that seamlessly transitions to an outdoor patio, ideal for entertaining or simply enjoying the peaceful surroundings. The property's 4 garage stalls provide ample space for vehicles and storage, while the beautiful landscaping adds to the home's curb appeal. Whether you're indulging in the privacy of your acreage or exploring the natural beauty that envelops your home, this property promises a lifestyle of relaxation and contentment.

Additional Details:

Year Built	1994
Lot Acres	3
Lot Dimensions	629 x 155
Garage Stalls	4
School District	2889
Taxes	\$1,980
Taxes with Assessments	(unreported)
Tax Year	2024

Additional Features:

Basement: Egress Window(s), Finished, Walkout **Fuel:** Oil **Garage:** 4 **Heat:** Forced Air **Sewer:** Private Sewer, Septic System Compliant - Yes **Water:** Well **Air Conditioning:** Central Air

Driving Directions:



Listed By:
Berkshire Hathaway HomeServices Premier
Property
Affinity Real Estate Inc. participates in the Regional Multiple Listing
Service of Minnesota, Inc Broker Reciprocity (sm) program, allowing
us to display other broker's listings on our website. All properties are
subject to prior sale, change or withdrawal.



Call Affinity Real Estate
218-237-3333
info@affinityrealestate.com



Affinity Real Estate - 600 Park Avenue South - Park Rapids MN 56470



website: www.AffinityRealEstate.com | email: info@affinityrealestate.com | office: 218-237-3333 | fax:218-237-3377

Affinity
REAL ESTATE INC

\$380,000
MLS 6552491 Residential
16201 Co Hwy 15
Audubon MN 56511



website: www.AffinityRealEstate.com | email: info@affinityrealestate.com | office: 218-237-3333 | fax:218-237-3377



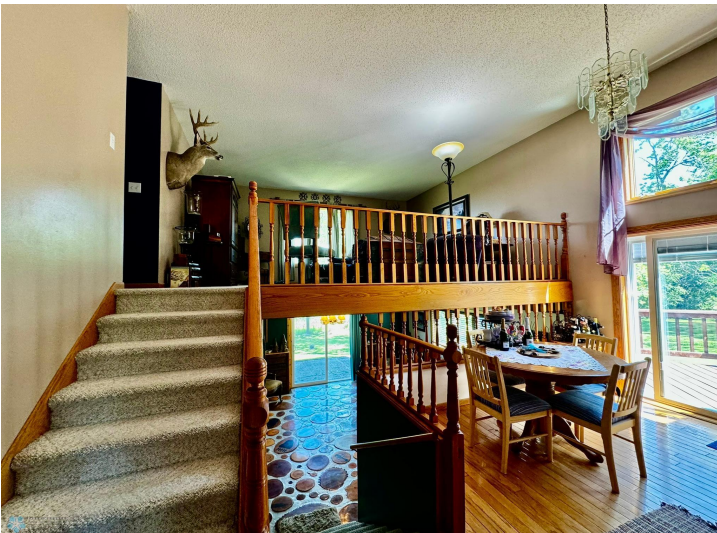
\$380,000
MLS 6552491 Residential
16201 Co Hwy 15
Audubon MN 56511



website: www.AffinityRealEstate.com | email: info@affinityrealestate.com | office: 218-237-3333 | fax:218-237-3377



\$380,000
MLS 6552491 Residential
16201 Co Hwy 15
Audubon MN 56511



website: www.AffinityRealEstate.com | email: info@affinityrealestate.com | office: 218-237-3333 | fax:218-237-3377

Affinity
REAL ESTATE INC

\$380,000
MLS 6552491 Residential
16201 Co Hwy 15
Audubon MN 56511



website: www.AffinityRealEstate.com | email: info@affinityrealestate.com | office: 218-237-3333 | fax: 218-237-3377

Affinity
REAL ESTATE INC

\$380,000
MLS 6552491 Residential
16201 Co Hwy 15
Audubon MN 56511



website: www.AffinityRealEstate.com | email: info@affinityrealestate.com | office: 218-237-3333 | fax:218-237-3377

Affinity
REAL ESTATE INC

\$380,000
MLS 6552491 Residential
16201 Co Hwy 15
Audubon MN 56511



website: www.AffinityRealEstate.com | email: info@affinityrealestate.com | office: 218-237-3333 | fax:218-237-3377

Affinity
REAL ESTATE INC

\$380,000
MLS 6552491 Residential
16201 Co Hwy 15
Audubon MN 56511