



MLS 6552703 Land

**\$47,900**

0.29 Acres  
Raw Land

TBD Birchdale Villa Drive  
Pequot Lakes MN 56472

Status: Pending



**Description:**

Discover the perfect spot for your next project with this level lot situated near Clamshell & Bertha Lake in the heart of Lake County. This versatile property is ideal for building a garage, pole building for recreational gear, or even your dream home. Nestled between Breezy Point and Crosslake, you'll enjoy easy access to a wealth of amenities and outdoor activities, including the Whitefish Chain of Lakes, multiple boat launches, the Whitefish Golf Course, and the Towering Pines Resort. The area boasts a vibrant community with shopping, dining, entertainment, the Paul Bunyan Trail, and numerous golf courses all nearby. Don't miss out on this exceptional opportunity—set up a showing today and envision the endless possibilities this lot holds for your future projects.

**Additional Details:**

Lot Acres	0.29
Lot Dimensions	145x11x200x146
School District	186
Taxes	\$22
Taxes with Assessments	\$22
Tax Year	2024

**Additional Features:**

**Driving Directions:**

From the intersection of County Road 66 and County Road 16 take County Road 16, go 7.6 miles, turn right onto Birchdale Villa Drive, go 0.5 miles.

Turn down unimproved road right before property with the numbered address 35324.



Listed By:  
Coldwell Banker Realty

Affinity Real Estate Inc. participates in the Regional Multiple Listing Service of Minnesota, Inc Broker Reciprocity (sm) program, allowing us to display other broker's listings on our website. All properties are subject to prior sale, change or withdrawal.



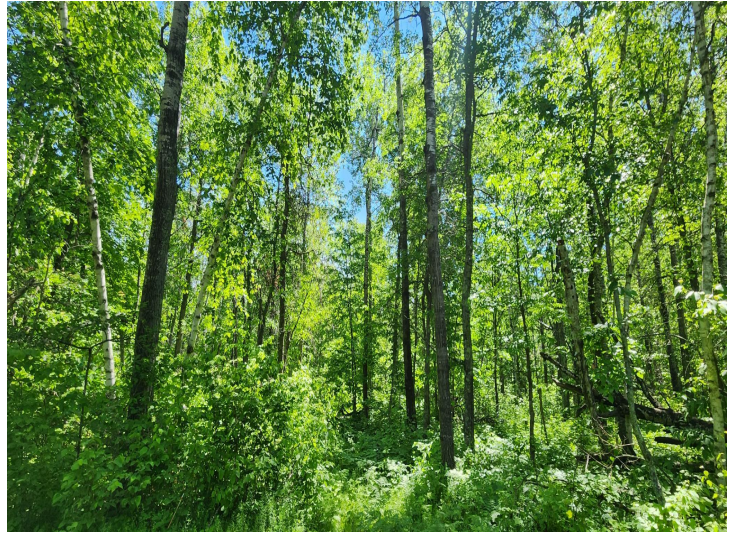
Call Affinity Real Estate

**218-237-3333**

[info@affinityrealestate.com](mailto:info@affinityrealestate.com)



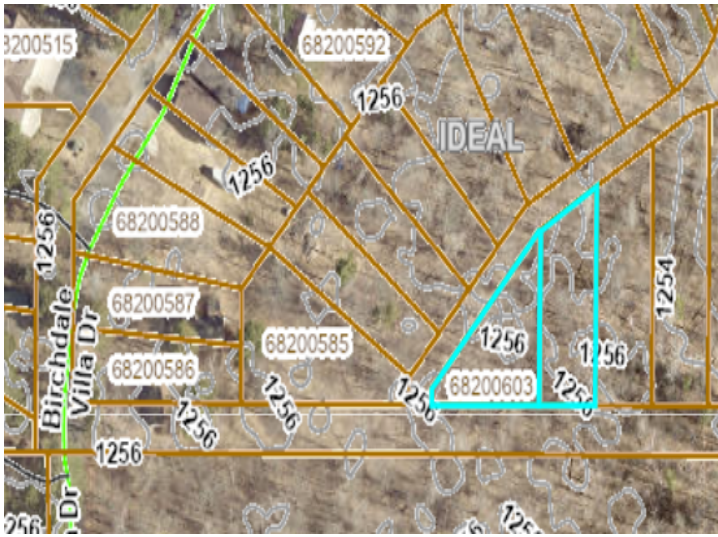
Affinity Real Estate - 600 Park Avenue South - Park Rapids MN 56470



website: [www.AffinityRealEstate.com](http://www.AffinityRealEstate.com) | email: [info@affinityrealestate.com](mailto:info@affinityrealestate.com) | office: 218-237-3333 | fax:218-237-3377



**\$47,900**  
MLS 6552703 Land  
TBD Birchdale Villa Drive  
Pequot Lakes MN 56472



website: [www.AffinityRealEstate.com](http://www.AffinityRealEstate.com) | email: [info@affinityrealestate.com](mailto:info@affinityrealestate.com) | office: 218-237-3333 | fax: 218-237-3377



**\$47,900**  
MLS 6552703 Land  
TBD Birchdale Villa Drive  
Pequot Lakes MN 56472