



MLS 6553236 Residential

**\$434,900**

1,440 sq ft  
2 bedrooms  
1 baths

50763 169th Avenue  
Bemidji MN 56601

Status: Active

**Description:**

This Beautifully handcrafted property is a short drive from all Bemidji has to offer. What it beholds is a dream for any nature lover, hobbyist, hunter, or someone just wanting to enjoy the serenity it brings. With several outbuildings including a Sauna, Blacksmith Shop, Chicken Coop, Craft Building, and more. This must-see property has exceptional hunting and gardening space, all at your front steps! The craftsmanship is second to none. Call to schedule your showing today!

**Additional Details:**

Year Built	1993
Lot Acres	30
Lot Dimensions	987x1332x989x1333
Garage Stalls	5
School District	31
Taxes	\$1,882
Taxes with Assessments	\$1,882
Tax Year	2024

**Additional Features:**

**Basement:** Block, Drain Tiled, Egress Window(s), Full, Partially Finished **Fuel:** Electric, Propane, Wood **Garage:** 5 **Heat:** Baseboard, Forced Air, Wood Stove **Sewer:** Outhouse, Private Sewer, Tank with Drainage Field **Water:** Drilled, Private, Well **Air Conditioning:** None

**Driving Directions:**

From Bemidji take Division St West to Great River Rd/169th Ave. or take Hwy 71 to Co Rd 9 to Great River Rd/169th Ave.



Listed By:  
Realty Group LLC

Affinity Real Estate Inc. participates in the Regional Multiple Listing Service of Minnesota, Inc Broker Reciprocity (sm) program, allowing us to display other broker's listings on our website. All properties are subject to prior sale, change or withdrawal.



Call Affinity Real Estate

**218-237-3333**

[info@affinityrealestate.com](mailto:info@affinityrealestate.com)



Affinity Real Estate - 600 Park Avenue South - Park Rapids MN 56470



website: [www.AffinityRealEstate.com](http://www.AffinityRealEstate.com) | email: [info@affinityrealestate.com](mailto:info@affinityrealestate.com) | office: 218-237-3333 | fax: 218-237-3377

**Affinity**  
REAL ESTATE INC

**\$434,900**  
MLS 6553236 Residential  
50763 169th Avenue  
Bemidji MN 56601



website: [www.AffinityRealEstate.com](http://www.AffinityRealEstate.com) | email: [info@affinityrealestate.com](mailto:info@affinityrealestate.com) | office: 218-237-3333 | fax: 218-237-3377

**Affinity**  
REAL ESTATE INC

**\$434,900**  
MLS 6553236 Residential  
50763 169th Avenue  
Bemidji MN 56601



website: [www.AffinityRealEstate.com](http://www.AffinityRealEstate.com) | email: [info@affinityrealestate.com](mailto:info@affinityrealestate.com) | office: 218-237-3333 | fax:218-237-3377

**Affinity**  
REAL ESTATE INC

**\$434,900**  
MLS 6553236 Residential  
50763 169th Avenue  
Bemidji MN 56601



website: [www.AffinityRealEstate.com](http://www.AffinityRealEstate.com) | email: [info@affinityrealestate.com](mailto:info@affinityrealestate.com) | office: 218-237-3333 | fax: 218-237-3377

**Affinity**  
REAL ESTATE INC

**\$434,900**  
MLS 6553236 Residential  
50763 169th Avenue  
Bemidji MN 56601



website: [www.AffinityRealEstate.com](http://www.AffinityRealEstate.com) | email: [info@affinityrealestate.com](mailto:info@affinityrealestate.com) | office: 218-237-3333 | fax:218-237-3377

**Affinity**  
REAL ESTATE INC

**\$434,900**  
MLS 6553236 Residential  
50763 169th Avenue  
Bemidji MN 56601



website: [www.AffinityRealEstate.com](http://www.AffinityRealEstate.com) | email: [info@affinityrealestate.com](mailto:info@affinityrealestate.com) | office: 218-237-3333 | fax:218-237-3377



**\$434,900**  
MLS 6553236 Residential  
50763 169th Avenue  
Bemidji MN 56601



website: [www.AffinityRealEstate.com](http://www.AffinityRealEstate.com) | email: [info@affinityrealestate.com](mailto:info@affinityrealestate.com) | office: 218-237-3333 | fax: 218-237-3377

**Affinity**  
REAL ESTATE INC

**\$434,900**  
MLS 6553236 Residential  
50763 169th Avenue  
Bemidji MN 56601

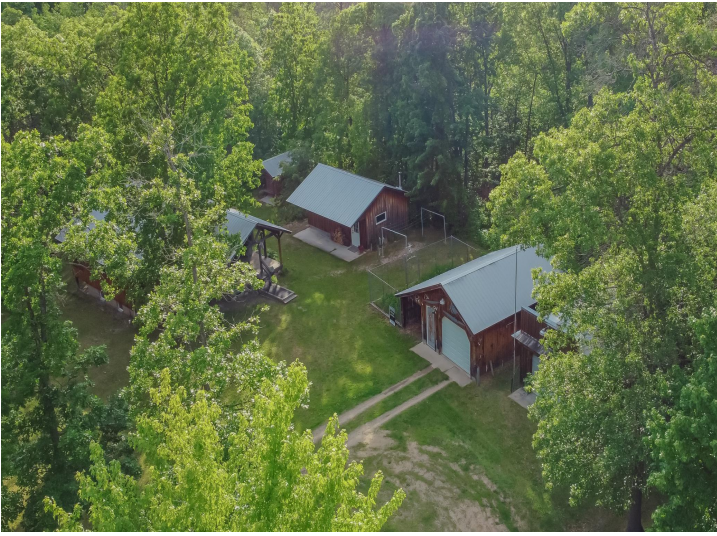




website: [www.AffinityRealEstate.com](http://www.AffinityRealEstate.com) | email: [info@affinityrealestate.com](mailto:info@affinityrealestate.com) | office: 218-237-3333 | fax: 218-237-3377

**Affinity**  
REAL ESTATE INC

**\$434,900**  
MLS 6553236 Residential  
50763 169th Avenue  
Bemidji MN 56601



website: [www.AffinityRealEstate.com](http://www.AffinityRealEstate.com) | email: [info@affinityrealestate.com](mailto:info@affinityrealestate.com) | office: 218-237-3333 | fax:218-237-3377



**\$434,900**  
MLS 6553236 Residential  
50763 169th Avenue  
Bemidji MN 56601



website: [www.AffinityRealEstate.com](http://www.AffinityRealEstate.com) | email: [info@affinityrealestate.com](mailto:info@affinityrealestate.com) | office: 218-237-3333 | fax:218-237-3377



**\$434,900**  
MLS 6553236 Residential  
50763 169th Avenue  
Bemidji MN 56601



website: [www.AffinityRealEstate.com](http://www.AffinityRealEstate.com) | email: [info@affinityrealestate.com](mailto:info@affinityrealestate.com) | office: 218-237-3333 | fax:218-237-3377



**\$434,900**  
MLS 6553236 Residential  
50763 169th Avenue  
Bemidji MN 56601