



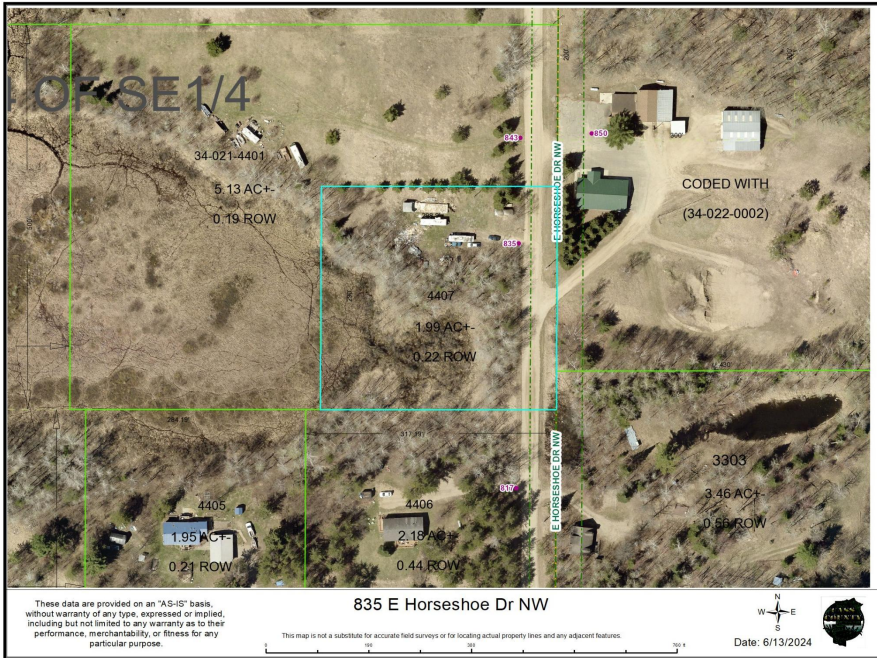
MLS 6553256 Land

\$38,000

1.99 Acres
Raw Land

835 Horseshoe Drive
Backus MN 56435

Status: Pending



Description:

A Diamond in the Rough. 1.9 acre lot close to several nearby lakes. Power, well, & septic are in, but have not been hooked up. Could be a very nice setting with a little vision.

Additional Details:

Lot Acres	1.99
Lot Dimensions	290x299x290x299
School District	2174
Taxes	\$132
Taxes with Assessments	\$198
Tax Year	2024

Additional Features:

Driving Directions:

From Backus, north on Hwy#371 to Godfrey's then East on Hwy#87 for approx 1.5 miles to left on E. Horseshoe Drive to 835 and property on left.



Listed By:
Rusty's Up North Realty

Affinity Real Estate Inc. participates in the Regional Multiple Listing Service of Minnesota, Inc Broker Reciprocity (sm) program, allowing us to display other broker's listings on our website. All properties are subject to prior sale, change or withdrawal.



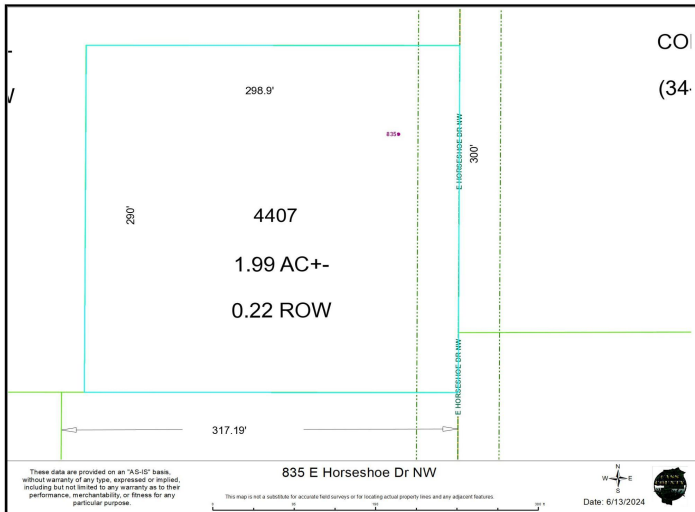
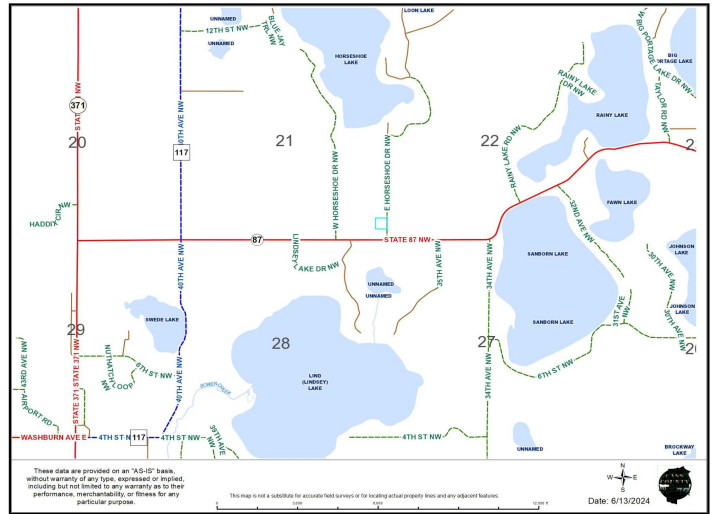
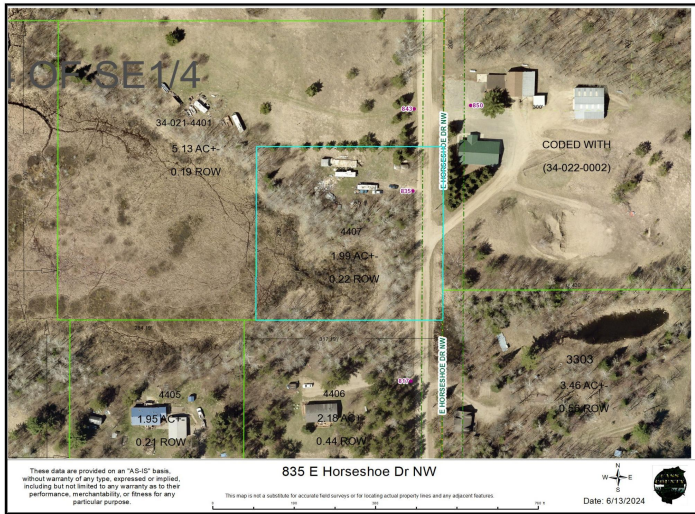
Call Affinity Real Estate

218-237-3333

info@affinityrealestate.com



Affinity Real Estate - 600 Park Avenue South - Park Rapids MN 56470



CO
(34

website: www.AffinityRealEstate.com | email: info@affinityrealestate.com | office: 218-237-3333 | fax: 218-237-3377



\$38,000
 MLS 6553256 Land
 835 Horseshoe Drive
 Backus MN 56435