



MLS 6553778 Lake Home

\$549,900

2,352 sq ft
4 bedrooms
2 baths

13215 County 110
Nevis MN 56467

Waterfront: Tripp

Status: Active

Description:

Don't miss your chance at a 31-acre private lakeshore sanctuary! Enjoy 800' of shoreline on the east side of Tripp Lake. This immaculate 4BR/2BA home features a striking vault w/ skylights, numerous fireplaces, granite countertops in the kitchens and BAs, spacious kitchen, & large deck. Enjoy both an oversized 3-car garage and a 35x45 pole barn with its own well/septic. Brand new furnace, A/C, and water heater. Water softener-1yo. Roof and siding new since 2017. Don't miss this gem!

Additional Details:

Year Built	2001
Lot Acres	31.45
Garage Stalls	7
School District	113
Taxes	\$2,376
Taxes with Assessments	\$2,376
Tax Year	2024

Additional Features:

Fuel: Propane **Heat:** Forced Air

Driving Directions:

From Hwys 71/34 in Park Rapids, South on Hwy 71, 4 miles to County Rd 87. East on Hwy 87, 16.5 miles to County 110. South on County 110 approx 2 miles to property on right.



Listed By:
Imagine Realty

Affinity Real Estate Inc. participates in the Regional Multiple Listing Service of Minnesota, Inc Broker Reciprocity (sm) program, allowing us to display other broker's listings on our website. All properties are subject to prior sale, change or withdrawal.



Call Affinity Real Estate

218-237-3333

info@affinityrealestate.com



Affinity Real Estate - 600 Park Avenue South - Park Rapids MN 56470



website: www.AffinityRealEstate.com | email: info@affinityrealestate.com | office: 218-237-3333 | fax:218-237-3377



\$549,900
MLS 6553778 Lake Home
13215 County 110
Nevis MN 56467



website: www.AffinityRealEstate.com | email: info@affinityrealestate.com | office: 218-237-3333 | fax:218-237-3377

Affinity
REAL ESTATE INC

\$549,900
MLS 6553778 Lake Home
13215 County 110
Nevis MN 56467



website: www.AffinityRealEstate.com | email: info@affinityrealestate.com | office: 218-237-3333 | fax:218-237-3377

Affinity
REAL ESTATE INC

\$549,900
MLS 6553778 Lake Home
13215 County 110
Nevis MN 56467



website: www.AffinityRealEstate.com | email: info@affinityrealestate.com | office: 218-237-3333 | fax:218-237-3377



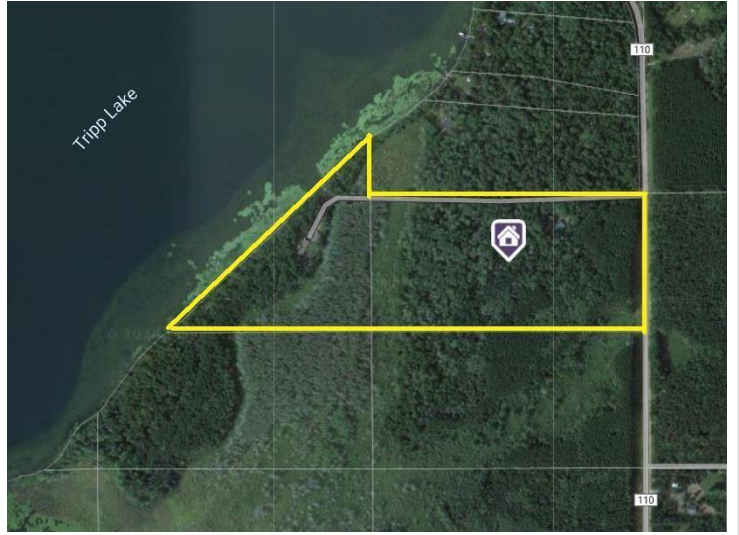
\$549,900
MLS 6553778 Lake Home
13215 County 110
Nevis MN 56467



website: www.AffinityRealEstate.com | email: info@affinityrealestate.com | office: 218-237-3333 | fax:218-237-3377



\$549,900
MLS 6553778 Lake Home
13215 County 110
Nevis MN 56467



website: www.AffinityRealEstate.com | email: info@affinityrealestate.com | office: 218-237-3333 | fax:218-237-3377



\$549,900
MLS 6553778 Lake Home
13215 County 110
Nevis MN 56467