



MLS 6553878 Residential

**\$124,900**

1,305 sq ft  
3 bedrooms  
1 baths

600 Central Avenue  
Park Rapids MN 56470

Status: Pending

**Description:**

Charming 3-bedroom, 1-bath city home situated on an expansive nearly one-acre lot adorned with large, mature trees. The main floor features a spacious living room and dining room, along with two comfortable bedrooms, a full bath, and a convenient laundry area. The second level offers 1+ rooms, ideal for a third bedroom, extra storage, or customizable space to suit your needs. A detached garage with an attached workshop provides ample space for all your creative projects. With plenty of space to enjoy the outdoors, this property offers a blend of city living with the tranquility of a spacious, tree-filled lot. Conveniently located close to in-town amenities, this home combines comfort with practicality. Take the first step in making this home yours—call today!

**Additional Details:**

Year Built	1900
Lot Acres	0.95
Lot Dimensions	206x200x207x199
Garage Stalls	1
School District	309
Taxes	\$1,102
Taxes with Assessments	\$1,312
Tax Year	2024

**Additional Features:**

**Basement:** Crawl Space **Fuel:** Electric, Natural Gas **Garage:** 1 **Heat:** Forced Air, Space Heater **Sewer:** City Sewer/Connected **Water:** City Water/Connected **Air Conditioning:** None

**Driving Directions:**

From Hwys. 71/34 in Park Rapids, go East on Hwy 34 to left on Central Ave N. (by Holiday Gas Station) to property on right.



Listed By:  
Coldwell Banker Crown Realtors

Affinity Real Estate Inc. participates in the Regional Multiple Listing Service of Minnesota, Inc Broker Reciprocity (sm) program, allowing us to display other broker's listings on our website. All properties are subject to prior sale, change or withdrawal.



**Call Affinity Real Estate**

**218-237-3333**

**info@affinityrealestate.com**



**Affinity Real Estate - 600 Park Avenue South - Park Rapids MN 56470**





website: [www.AffinityRealEstate.com](http://www.AffinityRealEstate.com) | email: [info@affinityrealestate.com](mailto:info@affinityrealestate.com) | office: 218-237-3333 | fax: 218-237-3377



**\$124,900**  
MLS 6553878 Residential  
600 Central Avenue  
Park Rapids MN 56470





website: [www.AffinityRealEstate.com](http://www.AffinityRealEstate.com) | email: [info@affinityrealestate.com](mailto:info@affinityrealestate.com) | office: 218-237-3333 | fax:218-237-3377



**\$124,900**  
MLS 6553878 Residential  
600 Central Avenue  
Park Rapids MN 56470



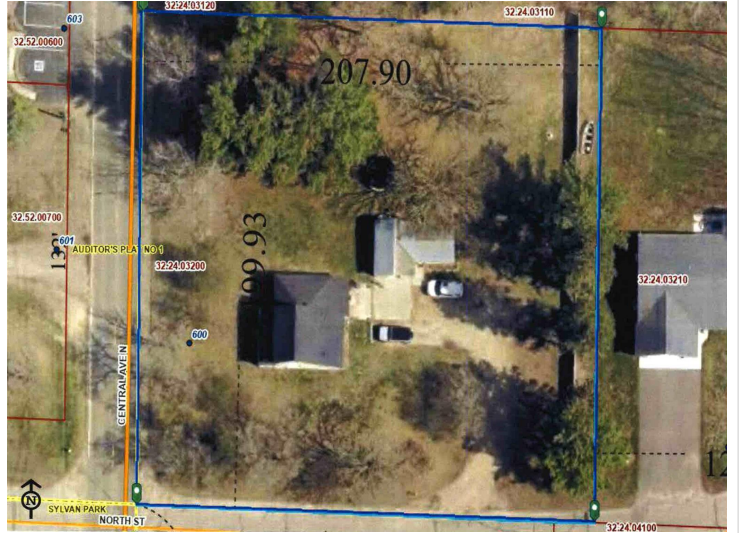


website: [www.AffinityRealEstate.com](http://www.AffinityRealEstate.com) | email: [info@affinityrealestate.com](mailto:info@affinityrealestate.com) | office: 218-237-3333 | fax:218-237-3377



**\$124,900**  
MLS 6553878 Residential  
600 Central Avenue  
Park Rapids MN 56470





website: [www.AffinityRealEstate.com](http://www.AffinityRealEstate.com) | email: [info@affinityrealestate.com](mailto:info@affinityrealestate.com) | office: 218-237-3333 | fax:218-237-3377



**\$124,900**  
MLS 6553878 Residential  
600 Central Avenue  
Park Rapids MN 56470