



MLS 6554468 Residential

\$374,900

3,492 sq ft
5 bedrooms
3 baths

4128 Big Bass Road
Bemidji MN 56601

Status: Active

Description:

Welcome to your sanctuary just minutes from town. This exquisite 3500 sq ft home boasts 5 bedrooms and 3 bathrooms, nestled on 5.8 acres of park-like grounds for unparalleled privacy and tranquility. Enjoy the seamless blend of indoor and outdoor living with expansive windows showcasing breathtaking views. In-floor heating and central air conditioning ensure year-round comfort.

Gather in the spacious living areas or entertain effortlessly on the patio, deck, or around the firepit in the evenings. A chef's delight with raised bed gardens providing fresh ingredients just steps away.

Five bedrooms offer comfort and privacy, with ample space for family and guests.

Convenient 2-car attached garage with additional storage space for tools and equipment.

Delight in the meticulously maintained landscaping with mature trees and lush greenery creating a serene atmosphere. Ideally situated close to town. Don't miss the opportunity to make this exceptional property your home.

Additional Details:


Year Built	1963
Lot Acres	5.8
Lot Dimensions	642x385
Garage Stalls	2
School District	31
Taxes	\$3,126
Taxes with Assessments	\$3,126
Tax Year	2023

Additional Features:

Basement: Wood **Fuel:** Propane **Garage:** 2 **Heat:** Boiler, Forced Air, Radiant Floor **Sewer:** Tank with Drainage Field **Water:** Well **Air Conditioning:** Central Air

Driving Directions:

North on Bemidji ave. Right on county road 20 past country club. Right on new bass road (19). left on big bass rd ne. property on left.

 Listed By:
218 Real Estate

Affinity Real Estate Inc. participates in the Regional Multiple Listing Service of Minnesota, Inc Broker Reciprocity (sm) program, allowing us to display other broker's listings on our website. All properties are subject to prior sale, change or withdrawal.

 **Call Affinity Real Estate**
218-237-3333
info@affinityrealestate.com

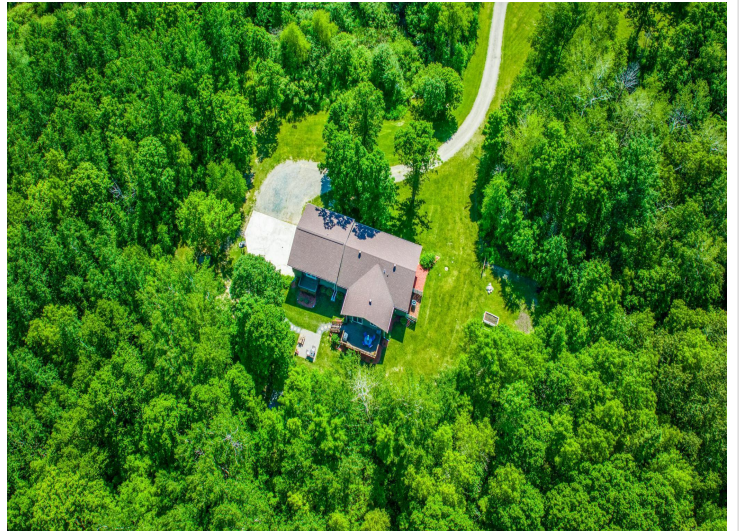
  
Affinity Real Estate - 600 Park Avenue South - Park Rapids MN 56470



website: www.AffinityRealEstate.com | email: info@affinityrealestate.com | office: 218-237-3333 | fax: 218-237-3377

Affinity
REAL ESTATE INC

\$374,900
MLS 6554468 Residential
4128 Big Bass Road
Bemidji MN 56601



website: www.AffinityRealEstate.com | email: info@affinityrealestate.com | office: 218-237-3333 | fax:218-237-3377



\$374,900
MLS 6554468 Residential
4128 Big Bass Road
Bemidji MN 56601



website: www.AffinityRealEstate.com | email: info@affinityrealestate.com | office: 218-237-3333 | fax:218-237-3377

Affinity
REAL ESTATE INC

\$374,900
MLS 6554468 Residential
4128 Big Bass Road
Bemidji MN 56601



website: www.AffinityRealEstate.com | email: info@affinityrealestate.com | office: 218-237-3333 | fax:218-237-3377

Affinity
REAL ESTATE INC

\$374,900
MLS 6554468 Residential
4128 Big Bass Road
Bemidji MN 56601



website: www.AffinityRealEstate.com | email: info@affinityrealestate.com | office: 218-237-3333 | fax:218-237-3377



\$374,900
MLS 6554468 Residential
4128 Big Bass Road
Bemidji MN 56601



website: www.AffinityRealEstate.com | email: info@affinityrealestate.com | office: 218-237-3333 | fax:218-237-3377

Affinity
REAL ESTATE INC

\$374,900
MLS 6554468 Residential
4128 Big Bass Road
Bemidji MN 56601



website: www.AffinityRealEstate.com | email: info@affinityrealestate.com | office: 218-237-3333 | fax:218-237-3377

Affinity
REAL ESTATE INC

\$374,900
MLS 6554468 Residential
4128 Big Bass Road
Bemidji MN 56601



website: www.AffinityRealEstate.com | email: info@affinityrealestate.com | office: 218-237-3333 | fax:218-237-3377

Affinity
REAL ESTATE INC

\$374,900
MLS 6554468 Residential
4128 Big Bass Road
Bemidji MN 56601



website: www.AffinityRealEstate.com | email: info@affinityrealestate.com | office: 218-237-3333 | fax:218-237-3377

Affinity
REAL ESTATE INC

\$374,900
MLS 6554468 Residential
4128 Big Bass Road
Bemidji MN 56601



website: www.AffinityRealEstate.com | email: info@affinityrealestate.com | office: 218-237-3333 | fax:218-237-3377



\$374,900
MLS 6554468 Residential
4128 Big Bass Road
Bemidji MN 56601



website: www.AffinityRealEstate.com | email: info@affinityrealestate.com | office: 218-237-3333 | fax:218-237-3377

Affinity
REAL ESTATE INC

\$374,900
MLS 6554468 Residential
4128 Big Bass Road
Bemidji MN 56601



website: www.AffinityRealEstate.com | email: info@affinityrealestate.com | office: 218-237-3333 | fax:218-237-3377



\$374,900
MLS 6554468 Residential
4128 Big Bass Road
Bemidji MN 56601



website: www.AffinityRealEstate.com | email: info@affinityrealestate.com | office: 218-237-3333 | fax:218-237-3377

Affinity
REAL ESTATE INC

\$374,900
MLS 6554468 Residential
4128 Big Bass Road
Bemidji MN 56601



website: www.AffinityRealEstate.com | email: info@affinityrealestate.com | office: 218-237-3333 | fax: 218-237-3377

Affinity
REAL ESTATE INC

\$374,900
MLS 6554468 Residential
4128 Big Bass Road
Bemidji MN 56601



website: www.AffinityRealEstate.com | email: info@affinityrealestate.com | office: 218-237-3333 | fax:218-237-3377



\$374,900
MLS 6554468 Residential
4128 Big Bass Road
Bemidji MN 56601