



MLS 6554905 Residential

\$349,900

2,696 sq ft
4 bedrooms
3 baths

2902 Arrowwood Circle
Bemidji MN 56601

Status: Pending

Description:

Welcome to this inviting 4 Bedroom 3 Bathroom Home. This home is close proximity to everything Bemidji has to offer located in a great neighborhood. Enjoy evenings on the deck overlooking this peaceful backyard. The spacious kitchen is great for entertaining or for that inner chef in you. Plenty of space for everyone including a double attached and double detached garages for all your toys.

Additional Details:

Year Built	1991
Lot Acres	1.21
Lot Dimensions	150x360
Garage Stalls	4
School District	31
Taxes	\$3,428
Taxes with Assessments	\$3,428
Tax Year	2024

Additional Features:

Basement: Block, Finished, Storage Space, Walkout **Fuel:** Natural Gas **Garage:** 4 **Heat:** Forced Air **Sewer:** Tank with Drainage Field
Water: Private, Well **Air Conditioning:** Central Air

Driving Directions:

5th Street to right on Adams to right on Arrowwood Circle. Look for address property on the right.



Listed By:
Grimes Realty

Affinity Real Estate Inc. participates in the Regional Multiple Listing Service of Minnesota, Inc Broker Reciprocity (sm) program, allowing us to display other broker's listings on our website. All properties are subject to prior sale, change or withdrawal.



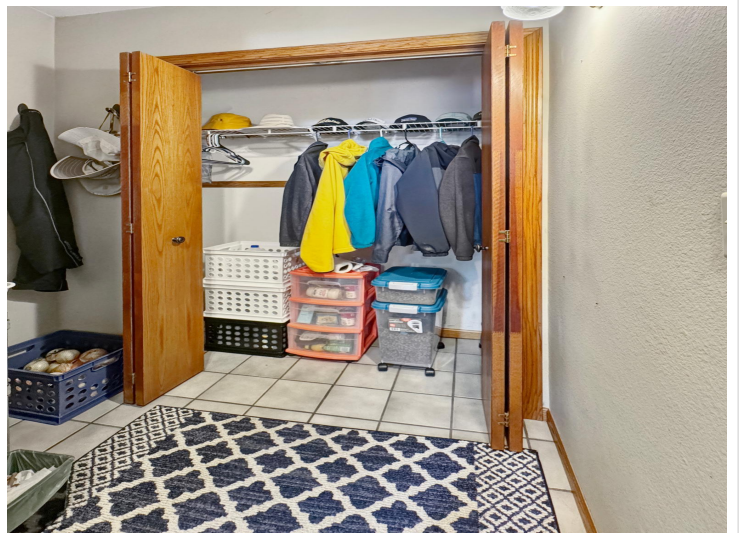
Call Affinity Real Estate

218-237-3333

info@affinityrealestate.com



Affinity Real Estate - 600 Park Avenue South - Park Rapids MN 56470



website: www.AffinityRealEstate.com | email: info@affinityrealestate.com | office: 218-237-3333 | fax:218-237-3377

Affinity
REAL ESTATE INC

\$349,900
MLS 6554905 Residential
2902 Arrowwood Circle
Bemidji MN 56601



website: www.AffinityRealEstate.com | email: info@affinityrealestate.com | office: 218-237-3333 | fax:218-237-3377

Affinity
REAL ESTATE INC

\$349,900
MLS 6554905 Residential
2902 Arrowwood Circle
Bemidji MN 56601



website: www.AffinityRealEstate.com | email: info@affinityrealestate.com | office: 218-237-3333 | fax: 218-237-3377

Affinity
REAL ESTATE INC

\$349,900
MLS 6554905 Residential
2902 Arrowwood Circle
Bemidji MN 56601



website: www.AffinityRealEstate.com | email: info@affinityrealestate.com | office: 218-237-3333 | fax:218-237-3377



\$349,900
MLS 6554905 Residential
2902 Arrowwood Circle
Bemidji MN 56601



website: www.AffinityRealEstate.com | email: info@affinityrealestate.com | office: 218-237-3333 | fax: 218-237-3377

Affinity
REAL ESTATE INC

\$349,900
MLS 6554905 Residential
2902 Arrowwood Circle
Bemidji MN 56601



website: www.AffinityRealEstate.com | email: info@affinityrealestate.com | office: 218-237-3333 | fax:218-237-3377

Affinity
REAL ESTATE INC

\$349,900
MLS 6554905 Residential
2902 Arrowwood Circle
Bemidji MN 56601



website: www.AffinityRealEstate.com | email: info@affinityrealestate.com | office: 218-237-3333 | fax:218-237-3377



\$349,900
MLS 6554905 Residential
2902 Arrowwood Circle
Bemidji MN 56601