



MLS 6555008 Land

\$33,900

1.39 Acres
Raw Land

TBD Fairway Trail Drive
Park Rapids MN 56470

Status: Active

Description:

Heavily wooded lot with mature Norway Spruce is now available for sale. Build your dream home at a great location, just minutes from Park Rapids, the Heartland Trail and the Headwaters Golf Course. This property is located on a dead-end road. Seller had begun clearing trees for a home site. Class 5 gravel and a culvert has been added for a driveway.


Additional Details:

Lot Acres	1.39
Lot Dimensions	352x113x338x93
School District	309
Taxes	\$80
Taxes with Assessments	\$80
Tax Year	2024

Additional Features:

Driving Directions:

From Highways 71/34 in Park Rapids, go east on 34. Take a left on Central Ave. N. Right on 204th Street. Right on Fairway Trail. Lot on right.



Listed By:
National Realty Guild

Affinity Real Estate Inc. participates in the Regional Multiple Listing Service of Minnesota, Inc Broker Reciprocity (sm) program, allowing us to display other broker's listings on our website. All properties are subject to prior sale, change or withdrawal.



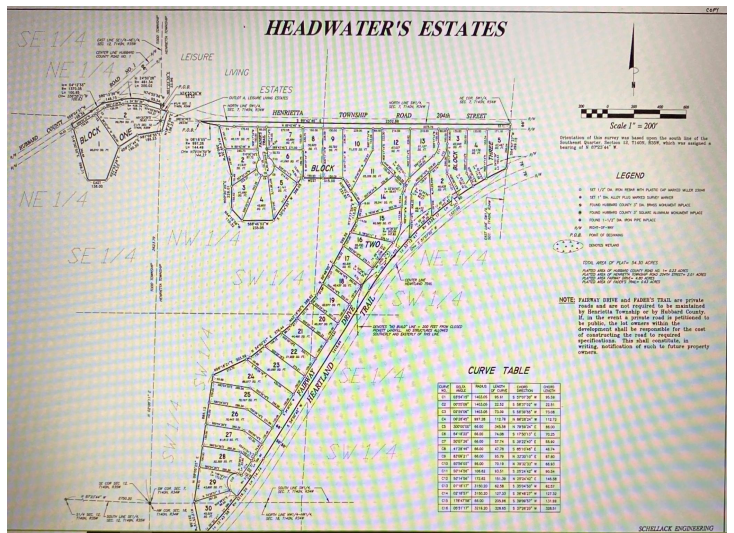
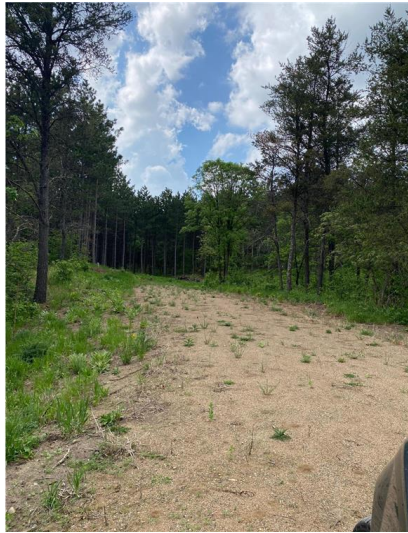
Call Affinity Real Estate

218-237-3333

info@affinityrealestate.com



Affinity Real Estate - 600 Park Avenue South - Park Rapids MN 56470



website: www.AffinityRealEstate.com | email: info@affinityrealestate.com | office: 218-237-3333 | fax:218-237-3377



\$33,900
 MLS 6555008 Land
 TBD Fairway Trail Drive
 Park Rapids MN 56470

HEADWATER'S ESTATES

COPY

KNOW ALL MEN BY THESE PRESENTS that Headwater County, Inc. a Minnesota corporation, hereby declares that the following described property situated in the County of Hubbard, State of Minnesota, is the following described property situated in the County of Hubbard, State of Minnesota, to-wit:
The land of the Headwater County, Inc. is all the land owned by the Headwater County, Inc. in the Township of Fairway, Range 18 North, Range 18 West of the 5th P.M.
The land of the Headwater County, Inc. is all the land owned by the Headwater County, Inc. in the Township of Fairway, Range 18 North, Range 18 West of the 5th P.M.
The land of the Headwater County, Inc. is all the land owned by the Headwater County, Inc. in the Township of Fairway, Range 18 North, Range 18 West of the 5th P.M.

I, the undersigned, being duly qualified, do hereby certify that the foregoing is a true and correct copy of the original as the same appears in the records of the County of Hubbard, State of Minnesota, to-wit:
The land of the Headwater County, Inc. is all the land owned by the Headwater County, Inc. in the Township of Fairway, Range 18 North, Range 18 West of the 5th P.M.

Witness my hand and the Seal of Headwater County, Inc. this 24th day of September, 2024.
Headwater County, Inc.
County of Hubbard, State of Minnesota

PROVIDER'S CERTIFICATE
I hereby certify that I am a duly qualified and licensed professional in the State of Minnesota, and that I am duly qualified to perform the duties of a Notary Public in and for the State of Minnesota.
Notary Public, State of Minnesota
[Signature]

website: www.AffinityRealEstate.com | email: info@affinityrealestate.com | office: 218-237-3333 | fax:218-237-3377



\$33,900
MLS 6555008 Land
TBD Fairway Trail Drive
Park Rapids MN 56470