



MLS 6555012 Residential

\$219,000

2,144 sq ft
3 bedrooms
2 baths

116 Spruce Avenue
Frazee MN 56544

Status: Pending

Description:

Ready to move in 3 bedroom 2 bath rambler style home, located in the city of Frazee! This property features many updates including new carpet, paint, kitchen counter, gas furnace, and more! Maintenance free windows, plus the home and garage roofs have been updated to metal. This property has a beautiful treed yard with a flower garden, multiple Hosta plants, and private patio area. Detached 24x26 garage and additional smaller garden shed and paved driveway. Basement is mostly finished with options for more bedrooms.

Additional Details:

Year Built	1959
Lot Acres	0.41
Lot Dimensions	120x150
Garage Stalls	2
School District	23
Taxes	\$1,942
Taxes with Assessments	\$1,942
Tax Year	2024

Additional Features:

Fuel: Natural Gas **Heat:** Forced Air

Driving Directions:

From the gas station in Frazee head SW across the RR tracks and go approx. 4 blocks on 87/S Lake street, turn left on Spruce Ave E and follow to the property on the right side.



Listed By:
Counselor Realty of Detroit Lakes

Affinity Real Estate Inc. participates in the Regional Multiple Listing Service of Minnesota, Inc Broker Reciprocity (sm) program, allowing us to display other broker's listings on our website. All properties are subject to prior sale, change or withdrawal.



Call Affinity Real Estate

218-237-3333

info@affinityrealestate.com



Affinity Real Estate - 600 Park Avenue South - Park Rapids MN 56470



These data are provided on an "AS-IS" basis, without warranty of any type, expressed or implied, including but not limited to any warranty as to their performance, merchantability, or fitness for any particular purpose.

1.564

Date: 6/13/2024

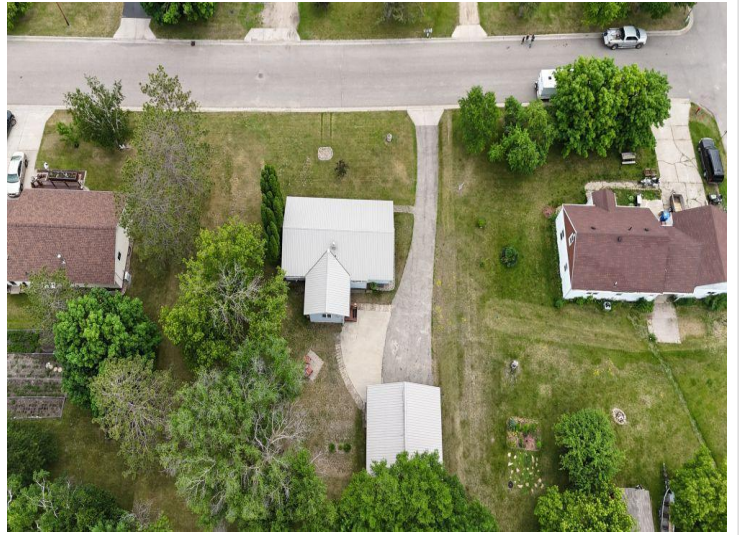
Becker County



website: www.AffinityRealEstate.com | email: info@affinityrealestate.com | office: 218-237-3333 | fax: 218-237-3377



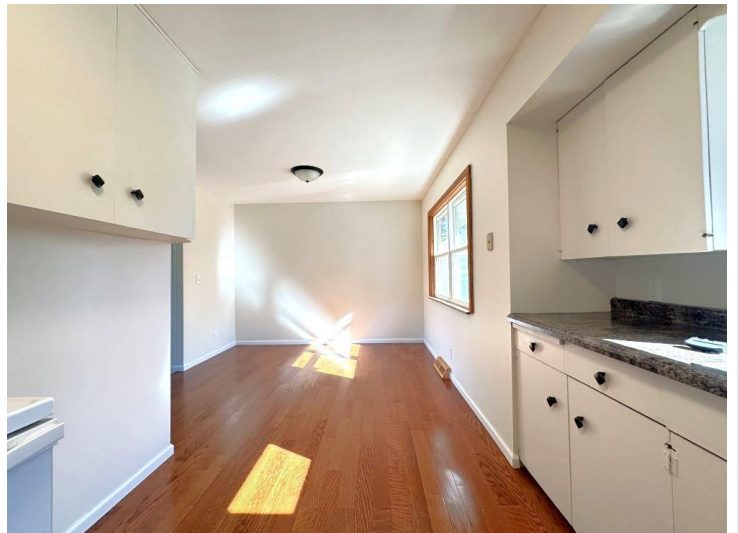
\$219,000
 MLS 6555012 Residential
 116 Spruce Avenue
 Frazee MN 56544



website: www.AffinityRealEstate.com | email: info@affinityrealestate.com | office: 218-237-3333 | fax:218-237-3377



\$219,000
MLS 6555012 Residential
116 Spruce Avenue
Frazee MN 56544



website: www.AffinityRealEstate.com | email: info@affinityrealestate.com | office: 218-237-3333 | fax:218-237-3377

Affinity
REAL ESTATE INC

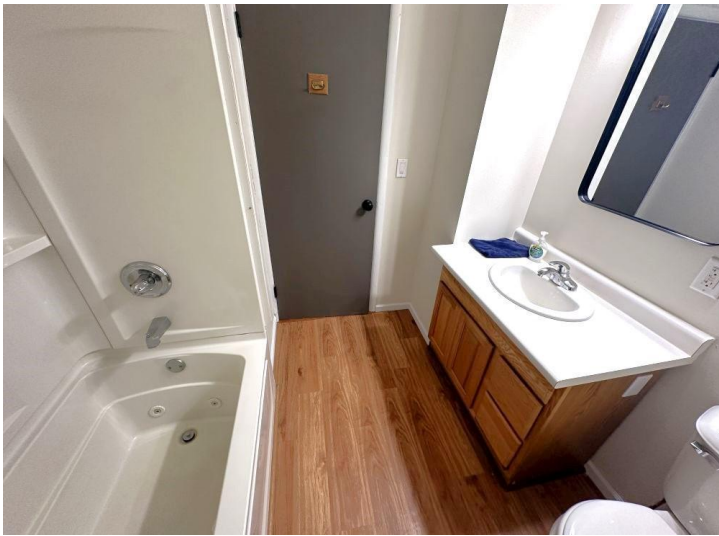
\$219,000
MLS 6555012 Residential
116 Spruce Avenue
Frazee MN 56544



website: www.AffinityRealEstate.com | email: info@affinityrealestate.com | office: 218-237-3333 | fax:218-237-3377

Affinity
REAL ESTATE INC

\$219,000
MLS 6555012 Residential
116 Spruce Avenue
Frazee MN 56544



website: www.AffinityRealEstate.com | email: info@affinityrealestate.com | office: 218-237-3333 | fax:218-237-3377



\$219,000
MLS 6555012 Residential
116 Spruce Avenue
Frazee MN 56544



website: www.AffinityRealEstate.com | email: info@affinityrealestate.com | office: 218-237-3333 | fax:218-237-3377



\$219,000
MLS 6555012 Residential
116 Spruce Avenue
Frazee MN 56544



website: www.AffinityRealEstate.com | email: info@affinityrealestate.com | office: 218-237-3333 | fax:218-237-3377

Affinity
REAL ESTATE INC

\$219,000
MLS 6555012 Residential
116 Spruce Avenue
Frazee MN 56544



website: www.AffinityRealEstate.com | email: info@affinityrealestate.com | office: 218-237-3333 | fax:218-237-3377



\$219,000
MLS 6555012 Residential
116 Spruce Avenue
Frazee MN 56544