



MLS 6555042 Residential

\$450,000

3,908 sq ft
3 bedrooms
2 baths

26762 474th Street
Laporte MN 56461

Status: Hold

Description:

Country living south of Bemidji! You'll find immaculate & meticulously well-cared-for home nestled in 20+ acres of picturesque land with mature trees, offering tranquility and ample space for all your needs. The main floor has 3 bedrooms, 2 baths including a primary suite, as well both a cozy familyroom & living room, ideal for relaxation and entertaining. In the basement, you'll find a second family room with versatile space designed for fun with a pool table and leisure, whether you envision a home theater, game room, or a cozy gathering spot, this area accommodates it all. There is also an office area, fitness room or potential 4th bedroom. There are both attached & detached garages as well as pole building. This is great for extra toy storage for boats, ATV's etc. The expansive outdoor space is a haven for nature lovers and outdoor enthusiasts, close to the Paul Bunyan Bike Trail.

Additional Details:

Year Built	1993
Lot Acres	23.8
Lot Dimensions	1800x667x875x225x975
Garage Stalls	4
School District	31
Taxes	\$3,234
Taxes with Assessments	\$3,234
Tax Year	2024

Additional Features:

Basement: Block, Daylight/Lookout Windows, Finished, Full, Sump Pump **Fuel:** Electric, Propane **Garage:** 4 **Heat:** Baseboard, Forced Air, Fireplace(s), Radiant Floor **Sewer:** Private Sewer **Water:** Private **Air Conditioning:** Central Air

Driving Directions:

South of Bemidji to Cty 9 (Fugate's), take left (East) follow to Cty 36, take right on 36, take left on 474th and follow to sign.



Listed By:
RE/MAX Results - Nisswa

Affinity Real Estate Inc. participates in the Regional Multiple Listing Service of Minnesota, Inc Broker Reciprocity (sm) program, allowing us to display other broker's listings on our website. All properties are subject to prior sale, change or withdrawal.



Call Affinity Real Estate

218-237-3333

info@affinityrealestate.com



Affinity Real Estate - 600 Park Avenue South - Park Rapids MN 56470



website: www.AffinityRealEstate.com | email: info@affinityrealestate.com | office: 218-237-3333 | fax:218-237-3377

Affinity
REAL ESTATE INC

\$450,000
MLS 6555042 Residential
26762 474th Street
Laporte MN 56461



website: www.AffinityRealEstate.com | email: info@affinityrealestate.com | office: 218-237-3333 | fax: 218-237-3377

Affinity
REAL ESTATE INC

\$450,000
MLS 6555042 Residential
26762 474th Street
Laporte MN 56461



website: www.AffinityRealEstate.com | email: info@affinityrealestate.com | office: 218-237-3333 | fax:218-237-3377

Affinity
REAL ESTATE INC

\$450,000
MLS 6555042 Residential
26762 474th Street
Laporte MN 56461



website: www.AffinityRealEstate.com | email: info@affinityrealestate.com | office: 218-237-3333 | fax:218-237-3377

Affinity
REAL ESTATE INC

\$450,000
MLS 6555042 Residential
26762 474th Street
Laporte MN 56461



website: www.AffinityRealEstate.com | email: info@affinityrealestate.com | office: 218-237-3333 | fax:218-237-3377

Affinity
REAL ESTATE INC

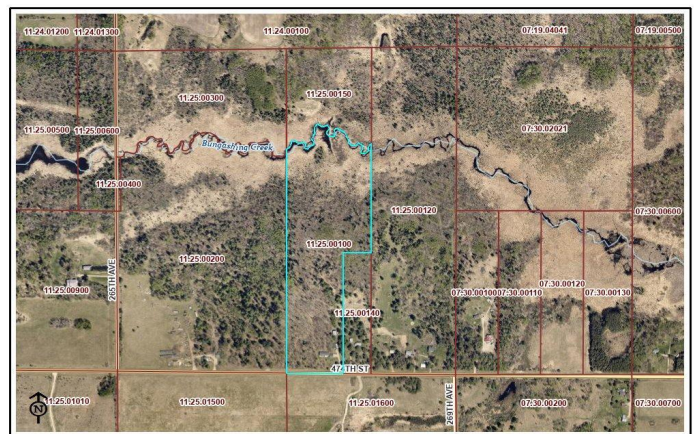
\$450,000
MLS 6555042 Residential
26762 474th Street
Laporte MN 56461



website: www.AffinityRealEstate.com | email: info@affinityrealestate.com | office: 218-237-3333 | fax:218-237-3377



\$450,000
MLS 6555042 Residential
26762 474th Street
Laporte MN 56461



DISCLAIMER: Information available on or accessed from Hubbard County GIS Maps is provided for informational and reference purposes only and does not constitute a warranty. It is not intended to be used for legal, engineering, or other professional purposes. Hubbard County makes no warranty as to the accuracy, completeness, or timeliness of the data and information contained in any particular system. Hubbard County and its employees are not liable for any damages, including consequential, direct, or indirect, arising from the use of maps or the information they contain. Maps from Hubbard County are not a substitute for a professional survey or other legal document. This data may not be used to determine the location or position of a structure or other object.

474th St
Hubbard County - 301 Court Ave, Park Rapids, MN 56470
Created 6/19/2024 at 12:18 PM

website: www.AffinityRealEstate.com | email: info@affinityrealestate.com | office: 218-237-3333 | fax: 218-237-3377



\$450,000
MLS 6555042 Residential
26762 474th Street
Laporte MN 56461