



MLS 6555089 Land

**\$27,500**

1.26 Acres  
Raw Land

TBD Marion Drive SE  
Bemidji MN 56601

Status: Active

**Description:**

This expansive 1.26-acre lot in a secluded Forest Park neighborhood is the perfect canvas for your dream home. Imagine the possibilities – a spacious house surrounded by nature, yet close to all the conveniences you desire.

**Additional Details:**

Lot Acres	1.26
Lot Dimensions	214x240x240x120x130
School District	31
Taxes	\$148
Taxes with Assessments	\$148
Tax Year	2023

**Additional Features:**

**Driving Directions:**

East on 1st street, right on Little Norway, left on Marion end of the street, look for sign.



Listed By:  
Grimes Realty

Affinity Real Estate Inc. participates in the Regional Multiple Listing Service of Minnesota, Inc Broker Reciprocity (sm) program, allowing us to display other broker's listings on our website. All properties are subject to prior sale, change or withdrawal.



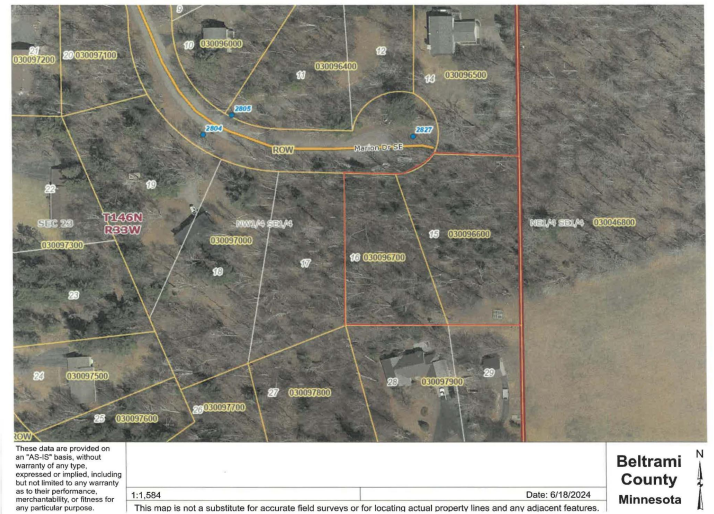
**Call Affinity Real Estate**

**218-237-3333**

**[info@affinityrealestate.com](mailto:info@affinityrealestate.com)**



**Affinity Real Estate - 600 Park Avenue South - Park Rapids MN 56470**



website: [www.AffinityRealEstate.com](http://www.AffinityRealEstate.com) | email: [info@affinityrealestate.com](mailto:info@affinityrealestate.com) | office: 218-237-3333 | fax: 218-237-3377



**\$27,500**  
 MLS 6555089 Land  
 TBD Marion Drive SE  
 Bemidji MN 56601